



# Annual Report

## 2021





# From the Heart

## OUR 2021 REPORT TO THE COMMUNITY



### Mission:

providing a safe space, loving peer support, outreach, and education to grieving children, teens, families and the community.

### Vision:

offering hope and supporting the resilience of children, teens, and families through a peer support family model. The Center's no-cost services are led by dedicated and highly trained staff and volunteers thanks to the generous support of our community.

# A letter from Anne

## Reflections on this past year

### Dear Friends:

If I could choose one word to sum up my feelings on this past year, it would be gratitude. Gratitude to our staff for their dedication to our cause; to our Facilitators and volunteers who stuck with us, even during the pandemic's most difficult months; to our Board for their unwavering leadership and clear direction during a time all non-profits were uncertain what the future held; to our donors who kept encouraging us every step of the way; and most importantly, gratitude to our families who continued trusting Center services during a time when typical channels of grief support were unavailable.

Community support continues to be critical as we begin to pick up the pieces from COVID-19's impact. The Center is the only organization in Maine that families can turn to when in crisis to receive immediate support to help their child. I am so grateful that the Center has been able to continue providing year-round peer support groups in a family model for no cost during this incredible time of need. In fact, our virtual services brought more people to the Center than we could have ever reached if only in-person as a result of virtual peer support groups, webinars, and virtual volunteer info-sessions. The work of our small but mighty team is foundational for building healthy communities across our state.

At a high level, Covid-19 has impacted how families grieve, what they are grieving, and how the Center meets their needs. Families grieving the death of a family member due to cancer, unexpected and traumatic deaths related to overdose, suicide, and accidental causes, and now COVID-19, are the primary reasons families reach out to the Center. Sadly, this reality seems to be worsening. In 2020, Maine's



Attorney General's Office reported a 33% increase in deaths caused by drugs when compared to 2019. Rates of anxiety and depression have tripled. Many grieving may be experiencing "prolonged grief", or their grief "frozen" in time, as this past year prevented so many from visiting family members and/or friends in hospitals, or holding funerals in ways many are accustomed to. Continued care of children in our Intercultural Program is especially important due to the disproportionate impact COVID-19 has had on communities of color within Maine and nationally. We are helping directly address all of these realities by providing a safe space and support for all of Maine's children to begin processing their grief.

Reflecting on this past year, I am humbled by the community support that has been un-ending and ever

expanding. In addition to our long-time supporters showing up at a time we needed it most, we are so grateful to the many that made their first gift towards the Center's mission. Our outreach efforts shifted to host community webinars on a variety of topics with grief and loss experts. More than 1,600 people attended live or watched recordings, and more than 300 registrants were brand new to the Center. Perhaps most exciting, as a result of transitioning our peer support services virtually in response to COVID-19, is we've welcomed rural Maine families into groups who live too far away to attend typically on-site services at Portland or Sanford.

This year has proven that we are capable of so much compassion, adaptability, and creativity to stay true to our mission. As we begin to envision a post-COVID world, I feel similar to how I felt at the start of this pandemic. I am hopeful. The challenges presented during these unprecedented times will continue bringing new opportunities for the Center to reach more families and develop new avenues for support from our incredible community.

I know in the year ahead, we will keep serving as a bright beacon of hope for grieving families across Maine.

With Gratitude,  
**Anne Heros**  
**Executive Director**



**Anne Heros**  
Executive Director





# Resilience: Belonging. Support. Hopefulness

## Advisory Board

Christine Bennett, M.D.	Gary Robinson
Gail Cinelli	Abdimajid Sharif
Kathy Crispin	Melissa Smith
Joe Delois	Andy Stickney
Michael Dubyak	Will Stiles
Shawna Ohm	Rev. Jacob Watson

## Staff (as of 6/30/21)

Anne Heros	Beth Quinlan
Chelsea Amaio	Sara Reddick
Sara Asch	Jamie Schwellenbach
Mary Bristol	Marie Sheffield
Cathy MacKinnon	Grace Smith (AmeriCorps)
Lisa Morin	Emma Walker
Justine Mugabo	Florence Young
Patty O'Brien	Janice Zurlo

## Trainers

Mary Donahue  
Beth Elicker  
Linda Kelly  
Bruce St. Thomas

## Consultants

Peg Dineen  
Valerie Jones  
Christine Linnehan  
Connie Palys  
Shelley Walker Rosen

## Board of Directors ‘20-21

**Mary Larkin (President)**  
President | Diversified  
Communications, USA

**Mark Pettingill  
(Vice President)**  
President & CEO  
Patrons Oxford Insurance

**Kevin Chase (Treasurer)**  
Audit Manager  
Baker Newman Noyes

**Robert Baldacci  
(Secretary)**  
Consultant  
Baldacci Consulting Group

**Julie Grosvenor, M.D.  
(Past President)**  
Physician & Associate Chief  
Medical Officer  
Southern Maine Health  
Center

**Kathy D. Baker**  
Rental Manager/Agent  
Kennebunk Beach Realty, Inc.

**Sandra Bagwell, M.D.**  
Director, Pediatric Intensive  
Care Unit  
Maine Medical Center

**Jenilee Bryant**  
Marketing Director  
Two Lights Settlement

**Doug Currier**  
Partner | Verrill

**Peter Dewitt**  
Head of Talent Marketing  
& Community Relations  
IDEXX

**Katherine Hogan**  
Associate Broker  
Mary Libby Living Real  
Estate

**John Holland**  
Former Director, Inside Sales  
and Customer Service for  
North America  
Sappi, North America

**William Kany**  
Sr. Vice President, Director of  
Legal & Government Affairs  
Saco & Biddeford Savings  
Institution

**Thomas Kelly**  
Vice President, Finance  
Hannaford Supermarkets

**Sara McLaughlin**  
Accounting/Finance  
Consultant

**Frank Mesina**  
Managing Partner,  
Registered Principal & FINRA  
Arbitrator  
New York Life Insurance

**Nicola Morris**  
Sr. Vice President, Corporate  
Development | WEX

**Diana Nelson**  
Principal | Black Fly Media

**Jeannine Pendergast**  
Sr. ESOP Client Advisor  
Spinnaker Trust

**Noah Petrucci**  
CFA & Portfolio Manager  
HM Payson

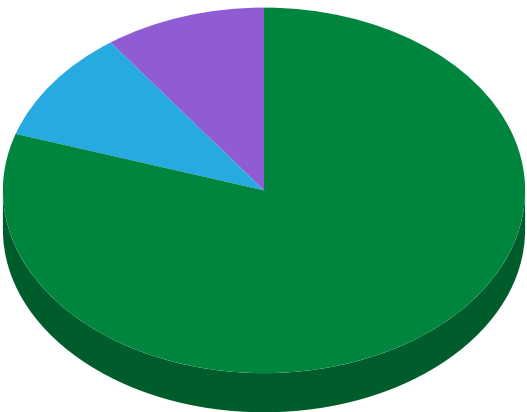
**Shikha Vasaiwala**  
Marketing Analyst &  
Planner  
KMA Human Resource  
Consulting

**Mike Wilson**  
Executive Vice President/  
Chief Operating Officer  
S2G Maine, LLC

**Jack Yao**  
Sr. Vice President & Chief  
Information Officer  
The MEMIC Group

# Welcome

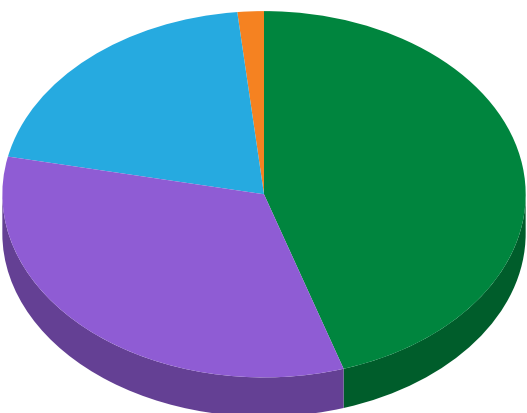
## Expense Allocation



● Program Services: 80% / \$903,704  
● Fundraising: 10% / \$116,525  
● Management & General: 10% / \$104,919

**Total Expenses: 100% / \$1,125,148**

## Revenue By Source:



● Individuals: 45.08% / \$467,529  
● Events: 33.22% / \$344,541  
● Grants: 20.07% / \$208,154  
● Other: 1.63% / \$16,911  
● Services: 0% / \$0

**Total Revenue: 100% / \$1,037,135**

*Financial information reflects the most recent FY 19/20 audit.*

# 788

Total requests for  
support & information:

# 51%

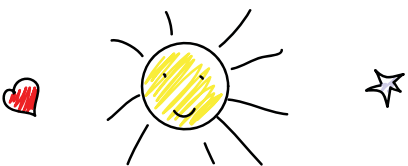
Phone

# 47%

Email

# 2%

Web/Social



# 621

People helped one another  
through peer support

# 18,295

Hours given by volunteers

# 1,430

Individuals served in outreach &  
education

# Bereavement Program

Providing grief support in our Portland and Sanford locations (and virtually during COVID-19) for children, teens, their parents, families, and bereaved parents, young adults, and widows/widowers/partners.

“My grandfather raised me because my mom was still in college when I was born, so I had a really special connection with him. We were always hanging out; I remember one day, I made him play turtles with me, so he’d get on his hands and knees and be a turtle. He would always play and hang out with me. That was really special for me.



Attending peer support groups helps me because I don’t really like talking about my grief with anyone. But then it’ll just all come out. My group helps me talk about it more; helps me cope with it. No one is saying, ‘Oh, you need to forget about this.’ They help you get through it.

**Eilee, age 12**

Bereavement Peer Support Program Participant



raided the kitchen because I said I wanted Oreos, and my facilitators said, ‘Okay let’s go raid the fridge’. One time we painted boxes. We do silly things like that.

After my grandfather died, I moved to Bereavement Peer Support. We meet every Thursday, online right now because of COVID-19. Attending peer support groups helps me because I don’t really like talking about my grief with anyone. But then it’ll just all come out. My group helps me talk about it more; helps me cope with it. No one is saying, ‘Oh, you need to forget about this.’ They help you get through it. And it’s not like school. They aren’t saying, ‘Ok you have this many weeks until it’s over.’ You can go there for as long as you need, which is great.”

**Eilee, age 12**

Bereavement Peer Support Program Participant

## Thank you and best wishes, Janice!



York County Coordinator, Janice Zurlo spent her last day with the Center before moving onto new adventures this past June 30th. Janice has been with the Center for ten years and has been instrumental in building and guiding the Center’s work in York County, including supporting families, recruiting and coordinating facilitators, and overseeing our night of service in Sanford.

In addition, Janice has staffed outreach responses, developed close, collaborative relationships with many community providers, as well as taking an important role in internal and community trainings. We will miss Janice very much as she goes on to her next adventures and wish her all the best!



# Tender Living Care Program

Helping children, teens, parents, and caregivers with the changes that come with a family member’s diagnosis of serious illness. Support is available from point of diagnosis and at every step along their journey with the illness.



Drawing made by 6 year old, Daya

“We look forward to our Monday nights. I am always filled with joy watching [my 6 year old daughter] Daya work with her team. They are always so good with her. Daya seems to really have fun.



I too feel like I am not alone in our family’s struggle with chronic illness and how it impacts us all in different ways.

**Jessica Getman**  
TLC Peer Support Program Participant

As for Noreen she seems to be refreshed each time to know she’s not alone in all she does [as a caregiver]. She very much appreciates the support. And I too feel like I am not alone in our family’s struggle with chronic illness and how it impacts us all in different ways.

The Center for us has been a safe and welcoming place where there is always a friendly face; a place where we become a part of one another’s journey.

Thank you for all you have done for our family just for being there.”

**Jessica Getman**  
TLC Peer Support Program Participant

## Cozy Night!

Over the winter, TLC planned a virtual Family Cozy Night! Seven families joined our volunteer facilitators for a cozy evening of family activities. Boxes were distributed to each family with craft supplies, popcorn, and hot chocolate for all, as well as a quilt and stuffed animal for each child. When we gathered online, each family member and facilitator created a ‘snowman self-portrait’ to share with the group, and everyone told their best snowman jokes! Volcano room facilitators then led the group in a family game followed by relaxation activities. The night closed with families cozying up to listen to a cute snowman story before everyone said goodnight.

It was a wonderful way to gather as a community, and was enjoyed by all.



# Intercultural Program

Creating healing communities, the Center’s Intercultural Program is for children and teens resettled in Maine from countries that have experienced war, violent conflict, and natural disaster, in collaboration with Portland Public schools. At 24 years old, this program is the oldest of its kind in the U.S.

We celebrated all of the students’ incredible growth, presence, and perseverance shown over this difficult past year!

**Talbot Elementary School 4th and 5th grade students** created superhero capes, suits, magical clay objects, and story-scenes depicting their strengths and superpowers, the issues in the world that they care about, and the ways that they can be - and already are - heroes in our community!

**Remote Learning Academy 8th grade students** spent the year learning about themselves and preparing for high school. They shared their strengths and identities, how they make decisions and advocate for themselves, and how they lead in the community. Each student spent the last month of programming thinking back on these themes and crafting collages to represent themselves, the ways that they have grown, and what they hope to be.

**Lyman Moore Middle School students** shared powerful conversations and expressive arts about their strengths, personal and communal identities, respecting self and others, experiencing emotions in our bodies, finding calm/peace, and looking forward with hope. Each small group worked together to write a few lines of poetry to reflect on the things they want to let go of, hold on to, and hope for.



LOVE IS IN OUR HEARTS



“Thank you for everything, I learned how to be social.”

Anonymous Remote Academy Participant

“I loved the time we had together. You guys made 8th grade fun. I hope I will have a chance to do this again”

Anonymous Remote Academy Participant



“My son is not usually very talkative, but I can see how happy he is during Center times, and how much he enjoys the sessions. In fact, he is always happier after the session, and even wants to help out around the house! I am so happy my son can benefit from Center services.”

Mother of a Lyman Moore Middle School Participant

“My son has managed to adapt quickly to zoom and learn a great deal of English over the past few months. He is one of the only students in the class who does not speak Portuguese. Because the students often speak to one another in Portuguese, he sometimes feels left out. Since he began coming to the Center, he has become much more motivated and feels more connected with his class. He is punctual on Wednesdays and really enjoys Center time. He takes his teacher’s encouragement to only speak English seriously, and refuses to speak French so that he can actively improve his English. He even promised his mother that he would read a certain number of books, and he met his goal!”

Mother of a Lyman Moore Middle School Participant





# Impact in Maine and beyond

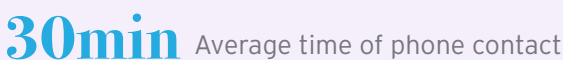
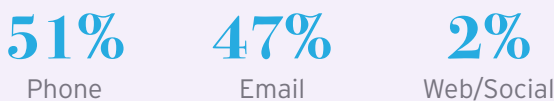
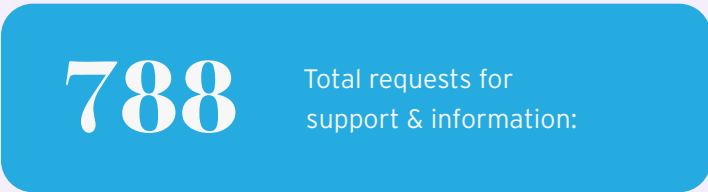
Providing services, training, and resources for both individuals and schools, and groups in non-profit and business settings to help support grieving children and teens in the places where they live, learn, and play.

## Peer support groups



## Phone & email support

Program staff responded individually to phone and email questions and concerns about how to support loved ones through grief and loss, and provided referrals to other resources and support, as needed.



Connect With Us

[cgcmaine.org](http://cgcmaine.org)

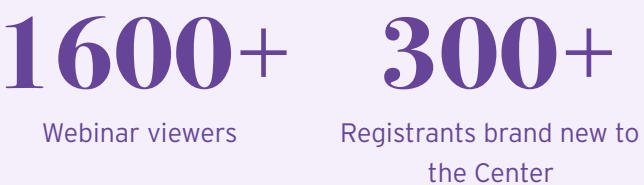


# Trainings & consultations

During this unprecedented year, the Center prioritized collaborating with grief and loss experts to host a number of relevant webinars at no cost to community members.

## Topics included:

- Growing Through Grief, Loss and Trauma: How Grieving Families and Children Can Find Healing, Hope, and Resiliency
- How to Navigate Stress in Isolation
- Intercultural Perspectives: Supporting Resilience With Intercultural Youth Experiencing Loss
- Burying a Loved One During a Pandemic
- Children & Grief - Beyond the Basics
- Autism 101 and Grief
- Supporting Grieving Children at Home and School



[View our Past Community Webinars](#)

## Feedback from our Viewers

"Thank you so much for this video! As an early childhood teacher, this is incredibly helpful to know that centers like this exist. My children often talk and share about their grief in my classroom and videos like this spark my interest to find ways to help them and to further my own growth in regards to grief. Much appreciated."

"The presenters had expertise and knowledge in working with and supporting children and families who have experienced trauma, grief or loss."

"They were incredible!! Answered all of the difficult questions with thoughtfulness, knowledge, and confidence—they were so helpful."



# Volunteers

Volunteers are the heart of the Center and no other year has it been clearer, as we navigated to virtual delivery of all things that make the Center MAGIC. Whether our volunteers serve as peer support facilitators, help with administrative tasks, provide event support (socially distanced, this year), or even tend to our garden, our programs would not be possible without them!

Hats off to ALL of our incredible facilitators who adapted in resilient and inspiring ways to carry the compassion, creativity and solace of the Center into remote services. Their amazing resilience during this trying year allowed for group activities to be developed that could have never been created in-person!



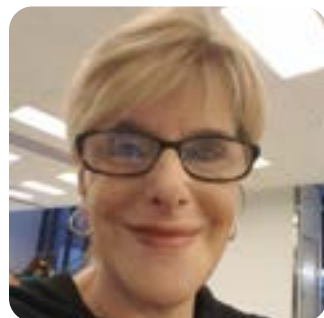
"I have been a facilitator on Thursday nights for 13 years. I am humbled and grateful to be one of many that hold families as they walk through the doors of the Center during the most difficult times in their lives. To bear witness and create a safe space for children and adults to share their stories and begin to take steps towards a 'new normal' is one of the greatest gifts of my life. Thank you for your support!"

**Maureen Keeley - Bereavement Peer Support Facilitator**



"Growing up in the Middle East, the impacts of personal and collective grief became a big part of my life. Through my experiences, I found that grief and loss held incredible opportunities to cultivate deeper and more genuine connections with ourselves, and one another. For this reason, I am a group facilitator in the Intercultural Program at the Center. I am thankful to be part of a community that honors the unique journeys of its members. The Center's mission is infused with profound beauty, creativity and mostly - LOVE."

**Abigail Koren - Intercultural Program Facilitator**



"I have been facilitating in the Tender Living Care program for nearly seven years. Spending time each week with the teenagers is the most grounding and fulfilling aspect of facilitating. I have deep admiration for their maturity, their empathy, and their ability to show incredible compassion toward each other. Since transitioning to virtual groups, I've continued to be inspired by the teenagers. My group has not only continued in conversation and connection, they've held onto the importance of being present. I am so glad the space still exists. Volunteering at the Center is an honor and privilege that makes my heart swell."

**Judi Slotsky - Tender Living Care Program Facilitator**



"As grief knows no timeline, the Center is always there for you. I have come back to the space in many different capacities throughout my entire life – first as an infant participant after the loss of my mom in 2003, and most recently as an intern last winter – and each time have been met with loving support, compassionate openness, and deep understanding. The Center will always be so important to my heart – I can't imagine a more grounding community."

**Grace Tumavicus - Office Volunteer**

## Thank you Rev. Jacob Watson!



Close friends, Rev. Jacob Watson, and Center Founder, Bill Hemmens

This year we felt we must take a moment to share our immense gratitude for Reverend Jacob Watson who was close friends to Bill Hemmens, the mastermind and creator of the Center for Grieving Children. Throughout the Center's more than 30 year history, Rev. Watson has been a guiding light offering a glimmer of hope for everyone he came in contact with.

As founding member of the Center's Bill Hemmens Bequest Society, named after his dear friend, Rev. Watson created an amazing legacy for future families in need of Center services. This past year, Center staff felt the same glimmer of hope during weekly staff meetings, as Jacob's meditations served as a moment of calm amongst the storm, and peace and clarity during what felt like, at times, chaos.

Thank you, Reverend Jacob Watson for all you have done, and continue to do for the Center!



If natural feelings are not expressed, over time they become distorted: natural grief becomes shame and blame, natural anger becomes hate and rage, natural fear becomes anxiety and phobia, and natural love becomes smothering and conditional.

These natural feelings call out to be expressed in the present moment, and that is what the Center provides: A safe place and safe people to express natural emotions. The Center knows our natural emotions are not signs of stress or mental illness, but health and life. Their purpose is to heal us, to wake us up to life.

**Reverend Jacob Watson**

# Events

Celebrating and supporting our work. Thank you to all of our community members, sponsors, and Corporate Partners who celebrated and adapted with us this year and whose continued and NEW support makes our work possible. This year, we welcomed so many new supporters into our community as a result of our new series of virtual events and webinars!



**Family Movie Night: Saco Drive-In**  
July 27th, 2020 & June 21st, 2021

We are so thankful to some incredible community sponsors and our Corporate Partners for making it possible for our families to see one another safely during the pandemic this year. Thanks to their unbelievable support, and the generosity of the Saco Drive-in, we were able to hold not one, but TWO Family Movie Nights for our Center families and volunteers!

In 2020, families waved and were thrilled for the opportunity to enjoy a socially distanced gathering outdoors, and this year it warmed our hearts to see so many of our littles and middles finally able to play with one another, and our families and volunteers having the chance to connect in-person together.



**Virtual 10K Together: Held online!**  
August 17th to 31st, 2021

During our first ever Virtual 10k Together, our unbelievable team of 25 “fundracers” ran a record-breaking 800 miles for the Center and surpassed two goals to raise over \$9,000 in support of our families and programs. We are so grateful to everyone who ran, walked, and shared their stories, and we were so touched by all of the amazing community members that supported them and made this two week event such a beautiful experience!



**Swing “Fore” the Center:**  
**Purpoodock Golf Course,**  
**Cape Elizabeth, ME.**  
October 27th, 2021

Nothing could stop our 18th annual Swing “Fore” the Center golf tournament this year! Though the pandemic led to some precautions and guidelines for the day, and a two-day storm caused us to postpone to our rain date– it was ultimately such a joy to see our teams all together for a beautiful, autumn day out on the course. Many thanks to all of our sponsors, golfers, and devoted volunteers who made it such a fun and impactful day for the Center. We are so grateful for your support!

Pictured here is the Patrons Oxford Insurance Company team, George MacKinnon, Ethan Guerrette, Rachel Bannister, and Board Member, Mark Pettingill



**WCYY Markathon: WCYY Studio,**  
**Portland, Maine**  
December 6th - 11th, 2020

This December, we were so grateful for Mark Curdo, former radio host at WCYY and General Manager of Aura, and our friends at WCYY to dedicate a week raising funds for the Center. Mark practically lived in the studio all week as he spun sensational song requests, shared on-air Center stories and interviews, and held an online auction filled with local goodies and music memorabilia, all to inspire generous donations from sponsors and our community.

Though we missed being in the studio in-person with Mark this year, we were thrilled to be able to gather Center staff and board members, along with Mark and the WCYY radio station team for a one-of-a-kind celebration over Zoom as we announced this year’s total raised!



**Virtual LOVE Gala: Held Online!**  
February 5th, 2021

A LOVE Gala like no other! For the first time in the event’s history, our LOVE Gala went virtual. We kicked it off with a week-long online auction and wrapped it up with our main event on the evening of February 5th, broadcasted LIVE to our guests at home.

We were joined by wonderful new friends ZEME Libre, who opened our event with their beautiful song Millions, and a touching slideshow of the many friends, families, volunteers, and supporters we missed seeing in person this year. Board President, Mary Larkin warmly welcomed our Center family who joined us from across the country and shared a message of hope, before introducing our emcee for the evening. Former board member and NEWS CENTER Maine anchor, Cindy Williams hosted our event live from Headlight Audio Visual’s studio.

This year’s beautiful program video, created and gifted to the Center by board member Diana Nelson and Jason Nelson of Black Fly Media, featured insights from two of our incredible team of facilitators who adapted to continue providing services to families during this time of incredible hardship, as well as stories from participants themselves, who stayed with us through it all.

Thank you so much to everyone who watched from home, sponsored a child, bid on an item, and sent along your well wishes. It was an honor to celebrate with you all and together you made an incredible difference for our Center families!



# Thank you Donors!

“I give to the Center because the impact of grief on all people, but especially children, is immeasurable. Our staff and facilitators do miraculous work to help families find their inner resilience. Our volunteers and the families who they help deserve and need our support.”

**Bill Kany,**  
**Center Board Member & Chair of the Center’s Board Development Committee**

## Annual Givers

David and Amy Abel	Eleanor Anderson
Nancy Abel	Robert J. Anderson, Jr.
Julie Marie Morrill Abbott	Anonymous
Lynn Abood	The Apple Lane Foundation
Accent On Windows	C.D. & Betts Armstrong
Kimberly Adams	Artel Inc.
Maureen Adams	Vincent Asanza
Victoria Adams	Jonathan Asen
Gregory and Lauren Adey	Cynthia Atkinson, M.D.
Mark Agnew	Devon Atwood
Monica Agnew	Adrienne Aust
AHEPA	Ernest & Susan Austin
Michael Akom & Julie Grosvenor, M.D.	Patricia Axelsen
Michelle Albert	Albert & Gail Ayre
Allagash Brewing Company, Inc.	B.H. Milliken
Walter & Ann Allan	B. Peachee Inc.
Gregory and Jeanette Allard	Cheryl Bachman
Janet Allen	Charles & Sandra Bagwell, M.D.’s
Allen, Sterling & Lothrop	Kathy D. Baker
Sara Almy	Tara A. Baker Patterson
Charles & Abigail Alsdurf	John & Karen Baldacci
Michele Alves	Robert & Elizabeth Baldacci
Chelsea Amaio	Robert & Kate Baldacci
Amazon Smile	Lisa Bals
American Endowment Foundation	Bank of America Charitable Gift Fund
Chrissy Anderson	Bank of America Matching Gifts
Dennis & Christine Anderson	Bank of America - Monument Square
	Robert Barbarino

Dianne Barbour
Daniel W. Barker
Marie Barlow
Wendy & Joshua Barrett
Dave & Karen Barry
Carol Bartlett
Julie A. Bartlett
Robert & Linda Bartlett
Shelly Bartlett
Robert & Elizabeth Barton
Steve Barton
Joel & Kim Bassett
William & Laurie Bassett
Natasha Baxter
Gail Beals
Janet Beattie & Karen Jasper
Loretta Beaucage
Brian Beauchemin
Roger Beaulieu & Jane Gagne
Michael & Jeanne Beck
Colleen Bedard
Kristen Bell
Christelle Belleville
Benevity Community Impact Fund
Anthony & Nancy Bennett
John & Holly Benoit
Dan & Heather Berger
Susana Raquel Berger
Mel & Judy Berghuis
Kellie Bernardini
Steven B. Berry
Brian Berset

Patricia Bessey
Best Buy Employee Giving
Doug & Robin Bibber
Ashley Bigda
C. David & Rebecca Billings
Esther Birkinbine
Spence & Susan Bisbing
Fred & Janet Bishop
Paul & Mary Bishop
Elaine Blackwood
Robert & Jill Blackwood
Thomas P. & Linda M. Blanchard
Stephen & Francine Blattner
Henry & Melissa Bliss
Britney Blodgett
Blue Knights Maine Chapter II
BNY Mellon Trust of Delaware
David Bobrow
Richard & Eleanor Bochner
Robert & Julie Boehme
Jeb & Josie Boeschenstein
Julie Ann Bonanni
Benjamin Bornstein
Richard Borts & Paulette York
Dennis & Patricia Boston
Bottomline Technologies
Alan & Kathleen Bouchard
Mark & Christina Bouchard
Nathan Boutin
Jared Bowns
Dillon Brabants
Janice E. Brackett

Stephen Bradley
Rachel A. Brady
Wade & Jenny Brainerd
Charles & Virginia Breen
David & Nancy Brenerman
David L. & Karen Brenner
Tim & Janet Brewer
Brewster House Bed & Breakfast
Jim & Trudy H. Briggs
Jessyca Broekman
Nick Brook
The Brook Family Foundation
John Brooks & Jennifer Mull-Brooks
Richard & Kimberly Brooks
James & Theresa Brown
Louis Bruno, D.M.D. & Marietta Bruno
Robert G. Bruns
John Buckley
John & Denise Budkiewicz
Kevin & Amanda Bunker
Andrew Burgess
Stephen Burke
Christina Burnell
Rebekah Burns
Elaine Butland
Karen Lynn Butland
Caroline Buzanoski
CAF America
Rob & Emily Caldwell
Michael Callnan
George Calvert



& Mary Austin Dowd  
Margaret & Shannon Calvert  
Camp Takajo  
Sarah Campbell  
Don & Laurie Cantara  
Cape Elizabeth Grange  
Constance Cardamone  
Doug & Linda Cardente  
Patricia Carignan  
Anne Linden Carlisle  
Dana & Karen Carlson  
Paul & Catherine Carmichael  
John E. Carpenter  
Jeannette Carr  
John & Lisa Carter  
Theresa Casavant  
Casco Federal Credit Union  
Everett & Maureen Casper  
CellBlock FCS  
David & Lynne Champoux  
Karina Chandler  
Benny & Poh-Yong Chang  
Kevin & Allison Chase  
Choate, Hall & Stewart LLP  
Brett Christensen  
Cecelia L. Cierpich  
Peter & Gail Cinelli  
Anthony Cipollone  
Circle K-Cash Corner  
Vaughn & Christine Clark  
Clark Insurance  
Claudette Pittman Batignani Inc.

Laurence Clifford  
Michael & Lori Ann Clifford  
Mary Jones Cobb  
Andrew & Judith Coburn  
Christine Coburn  
Amy Coha  
David Cohen  
Christine Colby  
Jack Cole & Sue Calhoun  
Douglas & Mary Ann Coleman  
Christine Collins  
Douglas & Jane Collins  
Jay & Lindsey Collins  
Paul Collins  
Tracey Collins  
Christine Collomy  
Michael & Carol Colton  
Danielle Concannon  
Chris & Denise Condon  
Zia Conedera  
Joseph & Dorothy Conforti  
Collette Conley  
Ida Connolly  
Tim Connolly & Anne Coates  
John & Madelyn Conroy  
Construction Systems of New England  
Jaime & Lisa Conway  
Bernal & Carleen Cook  
Daniel & Destiny Cook  
Pamela Cook  
John & Joshua Corbin

Brian Corcoran & Melissa Smith  
Bob & Monica Cormier  
Madeleine Corson  
Cottage Breeze Day Spa & Boutique  
Andrew & Kim Couch  
Count & Crush, LLC  
Bradford & Anita Coupe  
Brody Cousineau  
Wendy Craig  
Tom Crane  
Erica Cressey  
David & Patricia Critchfield  
Theresa Cronin  
Patrice & Dennis Cuddy  
Mrs. Mary V. Cullinan  
David Cummings & Gretchen Johnson  
Paula Curcio  
Douglas Currier  
Gary Currier  
Helen A. Curry  
Kelly L. Curry  
Richard Curry & Ellen Honan  
Thomas & Mary Cushman  
Bruce Dalbeck & Christine Bennett, M.D.  
Elizabeth Dalbeck  
Brian Dallaire  
Thomas A. Daly  
Lynda D'Amico  
Eduardo Daranyi  
Douglas Darby

Mike Davis  
Emily & James Davison  
Lucinda B. Day  
Daytrip Society  
Dead River Company  
Tom & Marnie Dean  
William & Linda Deetjen  
Nick & Lianna DellaTorre  
David DeLois  
Katie DeLorme  
Frederick Demers  
Nyanen Deng  
Matt Deschesne  
Steff Deschenes  
Charles De Sieyes & Carol Ward  
Beth DeTine  
Patrick Devine  
Cynthia DeWitt  
Pete & Cathie DeWitt  
Anna Diaz  
Lauren DiBenedetto  
Doug Dickey  
Kathy Dietz  
Tony DiMarco  
Cate DiMarzio  
Steve & Margaret DiMillo  
Peg Dineen  
Anne Dionne  
Joe DiPhilippo  
Disability RMS  
Jeff DiSandro  
Walter & Gretchen Dismukes

Clement Dodd  
Jerome R. Doherty  
Daniel Doiron  
Susan Doliner  
Kimberly Donnelly  
Peter F. Donnelly  
John E. Dooley  
The Dorothy Suzi Osher Foundation Trust  
Gwen Dorsey  
Thomas & Sara Dowd  
Downeast Energy  
Joel & Jeanne Doyon  
Nancy Dubin  
Michael & Denise Dubyak  
Samantha Duckworth  
Mark & Martha Dunlap  
Tom Dunlap & Maureen Kearney  
Charles & Elena Dupuis  
Thomas & Bernardine Dupuis  
Catherine Duranceau  
Philip and Nancy Durgin  
Burr & Deborah Crispin Duryee  
Nancy Duryee-Aas  
Michael & Christina Duverney  
Anthony Eames  
EBI Foundation  
Eileen Edwards  
Tiffany Edwards  
Kris Eimicke  
John & Ann Eisenhart  
Madeline Eisenhart

Miranda Eisenhart  
Vivien Eisenhart  
Carolyn Eklund  
Elsmere BBQ & Wood Grill  
Emmaus Lutheran Church  
Enterprise Holdings Foundation  
Roland & Joy Eon  
Michael Espeaignette  
Andy & Katharine Estabrook  
Estey Charitable Fund  
Jay Evans & Martha Palmer  
Jennifer Evans  
Sherri L. Evans  
Facebook Payments Inc.  
Falmouth Elementary PTO  
Falmouth Lions Club  
Peter H. Farnum, III & Janet Tunis  
Austin & Eileen Farrar  
John & Julia Fay  
Bernard Featherman  
James & Susan Ferguson  
Valerie Ferrante  
Marjorie Ferris  
Fidelity Charitable Gift Fund  
Fiduciary Trust Company International  
David Fillman  
Jonathan Finnimore  
Steve & Sue Fitts  
Lori Fitzmaurice  
Flatbread Company  
Pam Flick



Lonnie & Mary Floyd  
Lawrence & Shelagh Foley  
Folly 101  
Dick & Laurie Forbes  
Jason Ford  
Anne Foster  
Casey Foster  
James & Claudette Foster  
Jason Foster & Kristin P. Bosworth  
Michelle Foster  
Brian & Julie Fournier  
Susan Francoeur  
Robert Frank  
Fraternity Lodge #6 IOOF  
Sam & Norma Jean Fratoni  
Nancy Frazier  
Rachel Freedline  
Scott & Linda Freedman  
Maxwell & Linda Freeman  
Seth Freilich  
Frontstream Credit  
Diane Frost  
Anne Funderburk  
Funky Bow Brewery  
& Beer Company  
Vince E. Furey, Jr.  
Susan Gadbois  
Orey & Cynthia Gadway  
Nancy Gagnon  
Chuck & Susan Gajewski  
Jimmy A. Galvez  
David Gardner

Susan Garsoe  
Douglas & Andrea Gauvreau  
Sherri Gee  
Jonathan Gelchinsky  
Lynnis Gendron  
George L. & Clara S. Shinn  
Foundation  
Gerber Associates, P.A.  
Suzanne Gerry  
Stephen Gervais  
Mary Giftos  
Travis Gilbert  
David Gilbertson & Jane Carson  
Meghan Gildart Nappi  
Beth Gilford  
Priscilla Gill  
David Gilligan  
Gipson Family Foundation  
Girl Scout Troop 635  
John Given  
Susan W. Given  
John & Faye Gmeiner  
Mike & Brenda Gobeil  
Michelle Godbout-Clock  
Jodie Goodman  
Sarah Goodman  
Gary & Shelley Goodrich  
Sandra Goolden  
Richard Goppelt  
Scott & Vicki Gordan  
Jeff Gormady  
James & Maureen Gorman

Jeff & Sonya Gorman  
Steve & Sheena Gorsun  
Annette Gosnell  
Sarah Gowell  
Dave Goyet  
Ward & Kristen Graffam  
Granite Payments  
Douglas Green  
The Greene Family Trust  
James Greenlaw & Carolyn Dorr  
Brennon Grescoviak  
Mary P. Griffin  
Greg & Cathy Grigsby  
Lee Griswold  
Marty & Amy Grohman  
Pamela Gross  
Ethan Guerrette  
Gabrielle Guerrette  
Mariah Guimond  
Michael & Gayle Guptill  
Zeki Gurcan  
David Hack  
Elizabeth Hahn  
Haley's Metal Shop, Inc.  
Charles Hall  
Louis Hall  
Joseph Hallen  
Constance Hallett  
Peter Hallett  
Richard & Anna Hamilton  
Russell T. Hamilton  
Robert S. Hamlyn

Marty Hamre  
Morris Hancock  
& Linda Peyton Hancock  
Eric & Elizabeth Handley  
Bruce & Lenora Hansbury  
Nancy Hanson  
Jennifer Harnish  
Emily Harradon  
Charlotte Harrison  
David & Lisa Harrison  
Michael & Diane Hart  
Davis & Jane Hartwell  
Harvey Family Charitable  
Foundation  
Rob Harville  
David & Karen Haskell  
Kelly Hasson  
& Nicholas Mavadones  
Kevin & Jessica Hathaway  
Jessica Hauser  
Susan Hawes  
Shaun Hawkins  
David Hayden  
Sarah Hayes  
Mark Hazell &  
Catherine Lamson  
Donna Hazard  
Pete & Susan Hazzard  
Robert & Elizabeth Hebert  
Deborah Henry & Edith Aronson  
Anne Heros  
Peter Herzog & Julia Bloom Herzog  
Christine Hetherington

Bartlett & Kristina Hewey  
Chad Higgins  
Linwood Higgins & Elinor Gibbs  
Thomas Higgins  
John Hill  
Marcia L. Hill  
Margaret Hillman  
Donna Hilton  
Katherine M. Hirsh  
HM Payson  
Gregg Hoag  
Ronald & Stacy Hodge  
Brian & Margery Hodgkin  
David & Paula Hodgkins  
Denise Hodsdon  
William & Laura Hoey  
Russ Hoffman  
Kevin & Katherine Hogan  
John & Mary Holland  
Ron Holland  
Peter Hollander  
Holy Cross Lutheran Church  
Miranda T. Hope  
Vicki Cahill Hopewell  
Tom Hopkins  
Elizabeth Horton  
Denis & Lara Houle  
Ann Houser & Nancy Field  
Deborah Howard  
Marcia Howell  
Daniel & Sharon Howland  
Robert P. Hoyt

“The teams at Capozza Floor Covering Center hand selected the Center for Grieving Children to partner with because their mission to help individuals cope with loss, and learn to live a new, spoke to our hearts. We work within the homes of our clients every day, and when tragedy strikes and loss occurs, in any fashion, we want to help them rebuild physically and mentally. The work the Center does for those who experience loss of loved ones, loss of culture, loss of hope, inspires us to remember that every home we work within has its own story. We want to build the best life going forward for everyone in every household. We are privileged to support the hard working team at the Center as they help mend the heart of the home, the families within them, with care, love, and respect.”

**Theresa Rosmus,**  
**PR + Marketing Director at**  
**Capozza Floor Covering Center**



John & Maria Hughes  
Hull Law Office, LLC  
H. Draper & Elaine Hunt  
Kevin Hunt  
& Elizabeth Mitchell Hunt  
John Hutchins  
Julie Hutchins  
Stephen & Cynthia Hutchins  
Patrick Hutchinson  
Michael & Melissa Hutchison  
Thomas & Laurie Hyndman  
IBEW Local 2233  
IBM Employee Services Center  
Steven & Cindy Imm  
InterMed - Administrative Offices  
Intermed Pediatrics Staff  
Robert S.  
& Jessica S. Ireton-Hewitt  
Glenn Irish & Jane Madden Irish  
Thomas Isaacson  
James S. Isaacson  
& Kristen Isaacson-Lape  
Helen Isenman  
Susan Isenman  
J.B. Brown & Sons  
J. Gaudet Associates  
Gael Jackson  
Meredith Jackson  
Keith & Kathleen Jacques  
Scott Jalbert  
Joseph & Barbara Janco  
Jessica Janson  
Carrie Emma Jenkins Estate

Valerie J. Jennings  
Sheila Jepson  
The Jewish Federation of Greater  
Washington  
John Scott Plumbing & Heating  
Rachel & Snoop Johns  
Debbie Johnson  
Jeffrey S. Johnson  
Mandela A. Johnson  
Thomas & Justine Johnson  
Thomas & Ruth Johnson  
Deidre L. Johnston  
David & Ann Jones  
George O. Jones, Jr.  
Teresa M. Jones  
Justin Jordan  
Molly Joyce  
Sarah Joyce  
JustGive  
Bill & Holly Kany  
Christina Kapala  
Douglas & Ann Kaplan  
Edward & Blanche Katz  
Ericka Dodge Katz  
Karen Kauffmann  
Lucie Kay  
Edward Kazakavich  
KCV Trailers  
Robert Keach  
Alan & Melanie Keary  
Thomas Keller  
Thomas R. Kelley

Linda S. Kelly  
Paul & Lynne Kelly  
Thomas & Anne-Mari Kelly  
Jason Kendeigh & Susie Andros  
Jennifer Kenney  
Timothy & Janet Keogh  
Douglas & Charissa Kerr  
Kevin W. Smith & Son, Inc.  
James & Nancy Key  
KeyBank Foundation  
Neil & Elise Kiely  
Jaime Kiesow  
Catherine King  
Alex Kinner & Maria Little  
Diane J. Kirby  
Adam Knezevich  
Ted & Gretchen Knowles  
Mary Elizabeth Knox  
Andrew & Tara Knupp  
George Kokulis  
Harry Konkel  
Jim & Mary Jo Koran  
Andy Koutalakis  
Michael & Elizabeth Kramer  
Richard Kraut & Shelley Grant  
Ken Kunin & Beth Stickney  
Ryan La Pierre  
John & Jane Labbe  
Anne LaBossiere  
Jeff & Tedda LaChance  
Jennifer Shelley Lacroix  
William & Mary Lahner

Scott Lainer  
Rob Lally  
Carla Landers  
Landry Consulting  
Michael & Carolyn Lane  
Madeleine Lane-Duigan  
Jason Lang  
Amanda Langley  
Frank X. Langlois Estate  
Shawna LaPierre  
Mary Larkin  
Lauren Larkins  
Gregory Larochelle  
Andrew & Tonya Laslie  
Amanda Lauritzen  
Laurier & Janine Lauze  
Richard & Jackie Leach  
Peter & Marie Leavitt  
LeBlanc & Young  
Gary & Diane Leech  
Jessamyn Leeks  
Jeannine Lefevre  
Trish LeFevre  
Legacy Properties  
Sotheby's Intl. Realty  
William & Gail Legge  
Andrea Leidemann  
Lisa Lekousi  
Kathleen Lenahan  
Leonardo's Pizza  
Margaret Letarte  
Howard & Karen Levine

Bruce Lewis & Hona Longstaff  
Stephanie Lewis  
Dave & Donna Libby  
Francine Libby  
Liberty Mutual Insurance Co.  
Cameron Linen  
Christine Linnehan  
Lions Club of Cape Elizabeth, Inc.  
Wade & Heather Lippert  
Steve & Jan Litchfield  
Christopher Littlefield  
Joanna Littlefield  
Martha Littlefield  
Brian & Sandra Livingston  
Scott E. Loignon  
Kenneth & Julie Lombard  
Joe & Carole Long  
Joseph Lorello & Cheryl Farrington  
Losam Fund  
Charles N. Loveland, III  
Jeffrey & Olivia Ryan Loveless  
Joan M. Lovell  
Jeff & Cindy Lovitz  
Leigh Lowe  
Marcia Lowery  
Lubrano Family Charitable  
Foundation  
Amerise Luce  
Alison Luck & Patricia Murphy  
Carol Lydon  
Eoin & Louise Lynch  
Dale MacDonald

Duncan MacDougall  
John MacGregor  
Theresa MacKenzie  
Bruce Macomber  
John & Peggy MacWilliams  
Cynthia Magill  
James Maier, M.D.  
& Elizabeth Maier  
Maine Auto Service  
Maine Community Bank  
Maine Credit Union League  
Make-A-Wish Maine  
Meghan Maker  
Chester & Lenore Makowiecki  
Ted & Judy Malette  
Janice Maletzke  
Mandalorian Mercs  
William & Sandra Maners  
Edward & Marie Manganello  
James Mangini  
Christina Manning, M.D.  
Darlene Mantis  
Philip Mantis  
Norma J. Marchant  
Joel Marcinuk  
Paula Marquis  
Carl Marsano  
Anna Martens  
Michael & Allison Maurer  
Pauline Maxham  
Duncan McAllister  
Ed & Dorothy McAloney



“I support the Center as it is a haven for Maine families as they grieve their loss. It is a place where families can find support, strength and solace during a time when they most need it.”

**Mary Larkin,  
Board of Directors President**

John A. McArdle, III & Meredith Fisher McArdle	MEMIC
John McBratney	Eric Mercado
McCandless & Coburn LLC	Ian Mercer
Michelle L. McCarter	Shanna Merrill
Sherry McCarthy	Kate Merrow
Maryellen McCone	Cynthia A. Mervis
Philip McCormack	Matthew Methot
Stephen J. & Christine D. McDuffie	April Metivier
Bernard & Susan McFadd	Meghan Miers
Misty McFarland	The Miley Foundation
Vanessa McGee	David & Brenda Miley
Francis & Susan McGinty	Sheri Millbury
Nancy McGlynn	Kate Miller
George McHugh	Lawrence & Karan Miller
Alan McIlhenny, Jr. & Beth Ackerson	Whitney Miller
Mark McInnis & Amy Alsheskie	Brian & Patsy Milliken
Brian & Sally McInnis	Connie Minervino
Emily McIntosh	Kevin Minguy
Joshua McIntosh	Tierney Minte
Mary Lee McIntosh	Dan Mitchell
Joseph McKeon, Jr.	Jesse Mitchell
Robert McKillop	Dana & Janice Mitiguy
George McKinnon	Moe’s Original Bar B Que
Sara McLaughlin	Rick & Debby Molander
Mary Ann McLean	Jim Molleur & Sharon McKenna
Patrick J. McNally	John & Nancy Moncure
Eugene & Lorraine McSweeney	Rodney Mondor & Raymond Marc Dumont
Mechanics Savings Bank	Amanda Moore
William Melcher	Bruce Moore & Janice Chapman
Julie Melia	Shannon Moore
Spencer & Shea Melnick	Morgan Stanley

Morgan Stanley (Cybergrants)
Brian Morin
Jerry & Lisa Morin
Linda Morin
Erin Morley
Wayne & Caroline Morong
Ali Morrison
Dr. Caitlin Morrisroe
Doreen Morrow, M.D.
Morse Hill Trust
Paul Morton
Peg Schibig Moultime
Lewis Moynihan
Olivia Mull
Amy L. Mullen
Kenneth J. Murphy
Caron Maso Murray
Shauna Murray
Paul & Sarah Muscat
Richard Myers
Dana Myles
Carolann Mytych
Nappi Distributors
Jeffrey & Alison Nathanson
National Housing Insurance Group, LLC
Richard & Joan Natolli
NBT Bank
Benno Nelson
Jason & Diana Nelson
Lee Nelson & Cindy Williams Nelson
Leonard & Merle Nelson

Network for Good
Bonita Leah Neuchiller
MT Newman
Nicole Niehoff
Robert & Susan Nielsen
Kevin & Lisa Noonan
Mark Noonan & Chiara Battelli
Jeffrey Norris & Laura Newman
Maria Northcott
Norway Savings Bank
Michael & Sara Nussbaum
Jack & Margaret O’Brien
Patty O’Brien
Paul & Frances O’Brien
Peg O’Brien
Anne O’Callaghan Stephens
Anna O’Connor
Michael & Heidi O’Connor
Thomas & Elizabeth O’Connor
John & Mary Jo O’Day
Ben Odom
William O’Donnell & Jessica Wieselquist
Jennifer Ogden
Old Orchard Beach Funeral Home
Old Port Advisors
Geraldine Ollila, D.O.
Rick Olson
One4All Charitable Fund
Timothy O’Neil
OnPeak
Wayne Oosterman & Michelle Fortier-Oosterman

Patrick & Sue O’Reilly
Patrick O’Reilly
John Orestis & Barbara Crowley
Anthony & Kathryn Ornatek
Alonzo Osgood
Harry & Beatrice Osgood
Frank & Mary Lynn O’Shea
Harold & Peggy Osher
Leo Ouellette
Paul Ovigele & Whitney Ball
Jeannie Owens
P & C Insurance
Christina Padavano
Elizabeth Page
Ray Palczynski, Jr.
Gregg Palmer & Cathy Stankard
Francis & Constance Palys
Esther Pappas
Brian & Suzanne Paquette
Timothy & Wendy Paradis
Nelson & Toni Parise
Paul & Sheila Parker
Partners Bank
Hanni Pastinen
Mike Paterniti & Sara Corbett
Anne Patterson
Mark & Suzanne Patterson
Keith & Donna Payne
Leo R. & Suzanne M. Payne
Sheila Peabody
David & Leyla Pearce
Michael Pearce



Justin Pease	Portside Foundation
Frank A. Pecoraro	Robert & Diane Post
Philip J. Pedro	Charles & Margaret Pothier
David Pence & Moira Driscoll	Robert Povall
Jeannine Pendergast	Matt Power
PeoplesChoice Credit Union	Aileen Powers
Shari Peppard	Andrew & Maura Price
Sandra Perez	George & Harriet Price
Jason & Julie Perkins	Douglas & Rebecca Pride
Matthew Perkins	Peter & Suzanne Prinz
Ken & Mollie Perley	Pro Search, Inc.
David Perry	Rae Jean Proescholdbell
Sarah Perry	Ryan Prosser
Joline Persico	Provencher Fuels
Dorothy Petersen	Jim & Michelle Przybylowicz
David Peterson	Theresa Puckett
Amanda Petrozzini	Sue Purkis
Noah Petrucci & Diane Simon	Edward & Sandra Quinn
Mark A. Pettingill	John S. Quinn
Carl & Betty Pforzheimer	Ryan Quinn
Mark Philbrick	R. M. Davis, Inc.
Winthrop Phillips & Elizabeth Orlic	Patricia Rabidoux
Peter & Barbara Piccirillo	Robert Raff & Mary DeLois
Casie Pierce	Glen & Susan Rainsley
Kenneth & Kathleen Pierce	Lawrence Rakovan
Eric & Robyn Pinaluga	Heather Ramsay
Plansmith Corporation	Adam Rana, M.D. & Christina Rana
Mary E. Plouffe, Ph.D.	Jacqueline Rancourt
Charlie & Liz Poole	Mark & Amanda Rand
Kerry Porter	Rangeley Congregational Church
Portland Fire Fighters	Jason & Angela Raven
Portland Public Library	Robert & Elizabeth Ravenelle

Daniel & Nancy Ravin
David Ray & Kay Loftus-Ray
Heather L. Ray
Jennifer Raybin
Raymond James Charitable
Shana Ready
Daniel Reardon & Bernadette Woodcock
Daniel & Elinor Redmond
Redmond Family Foundation
Melissa Reed
RE/MAX Shoreline
U. Charles & Kathleen Rempel
Renewal by Andersen of Maine
RepubliCash-Portland, LLC
Mark & Denise Reynolds
Nathan & Abigail Reynolds
Kyle D. Rhoads
Peter Rice & Margaret Davis
Daniel & Lindsay Richman
Karen Riedel
Carol Riley
Riverside Golf Association
David & Tanya Rizzo
Maureen Leslie Robbins
Peter Robbins
Atticus & Evangeline Roberson
Brian N. Roberts
Ben Robinson
Christine Robinson
David & Kristin Robinson
Daniel Roche

Melanie Rodrigue
Crystal Rogers
Edward & April Rogers
Janice Rogers
Matthew & Stacey Rogers
Louise Roman
Yelena Romani
Thomas & Frances Roosevelt
John Rose
Howard Rosenstein
Enrico Ross
Jerry & Laura Ross
Rotary Club of Biddeford-Saco
David & Terry Rowden
Rubb Building Systems
Andrew & Judith Wey Rudman
Ashley Ruldolph
Bill Ruppert
Edward & Connie Ryan
Jeffrey W. & Donna M. Ryan
Saco & Biddeford Savings Institution
Saco Bay Rotary Club
Saco Veterinary Clinic
Jeffrey & Susie Saffer
Suzanne Salisbury
Gerard & Colleen Salvo
Susan Samberg
Dale A. & Julie B. Sanders
Julie Sandler
Jennifer Sansoucy
Taylor Santman

SANWECO, Inc.
Kenneth & Kathleen Sapanski
Kamran Sattarov
Katie Saucier
Philip & Kate Saucier
Carol Savage
Scarborough Sanitary District
Philip Scavotto & Cecilia Caldwell
Schiavi Family Foundation
Andrew Schmid
Peter & Margaret Schmid
Craig Schneider
Jeri Schroeder
Edward J. & Harriet B. Schultz
Gregory and Juliette Schwab
Schwab Charitable
Scoop Deck
Curtis & Cornelia Scribner
Second Levey Foundation
Mark E. Seeley
Casey Egan Segee
Vernon Seguin
Sellers Publishing, Inc.
Karen E. Sesto
Burak Sezen
Josh Shapiro
Sharon Arnold Lux School of Dance
Arthur Shaughnessy
Suellen Shaw
Melinda Sheehee
Andrew Sheriff
Karen Shibles

Kathleen Shibles
William Shumaker
Kimberly Simard
Henry & Jessica Simpson
Mackenzie Simpson
Steve & Gayl Sinclair
Manjinder Singh
Marc & Sarah Sirois
Roger C. Sirois
Harry & Jo Anne Sizemore
Mary Skehan
Rebecca Skolnik
Dan Slavin
Smaha Family Charitable Fund
David W. & Deborah M. Small
Tricia Small
Aaron Smith
Jessica Smith
Kenneth & Sally Smith
Kenneth Smith & Heidi Foreman-Smith
Kevin & Kathy Smith
Marianne Smith
Smithwick & Mariners Insurance, Inc.
Leland Snyder
Susan Solano
Somesville Union Meeting House
Emilie Sommer
Andrew & Pamela Soucy
Bobby Soucy
Benjamin Soule & Betsy McElvein Soule



Gail Spaien	James & Donna Swindells	Town of Kennebunkport	Samip Vasaiwala, M.D. & Shikha Vasaiwala	Douglas & Alison Watts
Michael Spiller	Systems Engineering	Kelly Townsend		Kimberly Wayne
Spinnaker Trust	Laura Talbot	Gladys Trainor	Sean & Kristin Venden	George & Jennifer Weber
Kenneth Spirer & Joan Leitzer	Mike Tanguay	Sandra Traver	Daniel & Kathleen Ventura	Webhannet Charitable Foundation
Katie Spotz	Dori-Anne Tarr	Brenda Treadwell	Don & Anne Vermeil	Alan Weichselbaum
Bruce St. Thomas & Peggy Fallon-St. Thomas	James & Elizabeth Taylor	Scott & Kylie Tremble	Raymond Veroneau, Jr.	Cam & Jack Weir
Kevin Stanhope	William Taylor & Nancy Thompson	Triton Foundation	Verrill	Wells Sanitary District
Kathryn Staples	TD Employee Charity Choice Account	Whitney Trosper	Verrill Foundation	The Wentzell Family
Starbucks - Corporate Office		Jed Troubh	The VIA Agency	Edith White
Christina Starr	Ralph & Marilyn Tedesco	TruChoice Federal Credit Union	Mary Villano	Maureen White
Carl & Barbara Stasio	TEGNA Foundation	Krystin True	Marina Villeneuve	Dave & Judith Whitten
Steven & Anne Staton	Lynne Tetreault	Kevin Trytek	Jeffrey Viola & Julie Landry Viola	Carol Wiggins
Tim & Karen Stebbins	Sonya Theriault	Ed and Megan Tumavicus, M.D.'s	Lawrence B. Violette	Lee Ann Wilcox
David & Bess Steiger	Charlie & Ellen Therrien	Herbert & Grace Tyler	Ron Vire	Richard & Mary Lee Wile
Matthew Stein	Linden Thigpen	Two Lights Settlement Services, LLC	Vitalius Real Estate Group	Jonathan & Lisa Wilk
Christopher & Terri Stevens	Melvin Thomas	Maida R. Uhlig	George & Nancy Vitek	Blake & Gibson Wilkes
Drew & Robin Stevens	Joel Thompson	Unified Parking Partners	Douglas & Gail Volk	Lisa Willey
Kimberly Stewart	Tim & Nancy Thompson	United Way of Androscoggin County	Jonathan Vought	The William J.J. Gordon Family Foundation
Andrew & Ann Stickney	Rochelle Thorne		Kristen Voyvodich	Kimberly A. Williams
Timothy & Sarah Stickney	Susan Thurlow	United Way of Mid Coast ME, Inc.	Bradford & Amber Wagner	Ellen Wills
Will Stiles & Hilary Rapkin	Racquel Tibbetts	Unity Lodge #3	Joseph & Mary Ellen Walek	
Allie J. Stockwell	TisBest Philanthropy	UNUM	Eric & Anne Walker	Charlotte Wilson
Sandra Stone	Titan Mechanical, Inc.	Marilyn Urbano	Donna M. Walker	Michael Wilson
Elizabeth Stout	David N. Tompkins	V & E Enterprises, Inc.	Susan Wallace	Nathan Wilson & Patricia Gallagher
Daniel & Angela Strader	Christine Torraca	Teresa Valliere	Laura Walton	
Robert Strauss	Thomas & Pamela Torre	Jim & Sarah Van Fleet	David Warren	Timothy & Tracy Winkeler
Joseph R. Sturtevant	Henry Tosi, Jr.	Beth Van Gorden, L.C.S.W.	Nathaniel Warren-White	Mark A. Winship
Sun Life Financial	Paul & Colleen Toth	Vanguard Charitable	Tim Washburn	Kerry & Rebecca Winslow
Superintendent of Schools Madawaska	Michael & Laura Totta	John VanLonkhuyzen & Nicola Morris	Mary Waterhouse	Karen A. Withrow
Amanda Surace	Nathan & Nova Tower		Bradford & Elizabeth Watson	Alicja Wolak
Eric & Beth Ann Swan	Town & Country FCU	David Van Slyke & Susan Granai	Daniel & Elizabeth Watson	Barry Wolfson
	Town Fair Tire Foundation	Stacy & Rodney Varney	Rev. Jacob & Kristine Watson	Neal Workman
				Jeff & Ellen Worthing

“The Center taught me that even though many may define me by my loss, I can do and be more, and it's okay to do things that make me happy. Just because I’m happy doesn’t mean I miss my daughter any less. Running is my one thing I've always loved to do and I’m so glad I found my way back to it.

During the Center's virtual “10K Together!” this year, I hit my comma day; 1,000 days of running at least a mile a day. I'm thrilled my comma day was in the middle of my fundraising for the Center! I can't thank the Center enough for how they helped my son and me, but I can run, and I can fundraise!

**Kathleen Judice,**  
**Former Center family and current 10K Together! Participant**



John & Carolyn Wright  
Miranda Wyatt  
Sandra Wyman  
Jack & Darnell Yao  
Yarmouth Lions Club  
Jonathan & Susan Young  
YourCause, LLC  
Liana Zaborowski  
Sam Zager, M.D. & Tracy Zager  
Emily Zelinski  
Barry & Janet Zimmerman  
Scott & Regan Zimmermann  
Graham Zorn  
Michael & Janice Zurlo

Friends of Hope

Gregory & Jeanette Allard  
Anonymous  
Ashley Bigda  
John Brooks  
& Jennifer Mull-Brooks  
Lori Fitzmaurice  
Michelle Godbout-Clock  
Zeki Gurcan  
Charlotte Harrison  
Teresa M. Jones  
Christopher Littlefield  
Philip McCormack  
Brian & Sally McInnis  
Jesse Mitchell  
Paul Morton  
Paul Ovigele & Whitney Ball

Justin Pease  
Sarah Perry  
Jacqueline Rancourt  
Peter & Margaret Schmid  
William Shumaker  
Aaron Smith  
Susan Solano  
Katie Spotz  
Kevin Stanhope  
Amanda Surace  
Timothy & Tracy Winkeler

Bill Hemmons Society

Robert Anderson  
Christine Bennett, M.D.  
Gail Cinelli  
Bruce Dalbeck  
Fred Demers  
Denise Dubyak  
Michael Dubyak  
Peggy Fallon-St. Thomas  
Ben Foley  
Lynn Foley  
Rebecca Foley  
Julie Grosvenor, M.D.  
Stephen Hart  
Anne Heros  
Linda S. Kelly  
Mary Larkin  
William Legge  
Jennifer Mull-Brooks  
D. Suzi Osher

Hilary Rapkin  
Cathy Robinson  
Gary Robinson  
Bruce St. Thomas  
Kimberly Simard  
Melissa Smith  
Will Stiles  
Ed Tumavicus, M.D.  
Beth Van Gorden  
Cynthia Veroneau  
Patrick Veroneau  
Rev. Jacob Watson  
Kristine Watson

In Honor

All teachers, esp. my wife Michele  
All the participants at the Center  
Anna Alongi  
Molly Anderson  
Justin, Juna, & Anya Andre  
Anonymous Make A Wish Child  
Gail A. Arnold  
Sara Asch  
David Aust  
Meg B.H.  
Miranda Barrett  
Matt Barry  
Dr. Christine Bennett  
Esther Birkinbine  
Libby Bunten  
The Center for Grieving Children  
CGC Volunteers, Staff, & Interns

Children of fallen soldiers in Iraq  
Scott Comstock  
Doug Currier  
Elizabeth Cox Richardson  
Frank Crossman  
Mark Curdo  
Mikayla Cyr  
Sam Davis  
Dominique Del Valle  
Cody Delong  
Frederick G. Demers  
Frank DiBenedetto  
Natalia DiBenedetto  
Denise Dubyak  
Burr Duryee  
Betsy & Tom Elliman  
To everyone working the night shift  
Food Delivery Employees  
Vincent Furey  
The Gagne Family  
Diana Grandas  
Grieving Children  
Lynne Grimaldi  
The Griswold Family  
Grocki/Noll Family  
Donna Hahnel  
Stephen D. Hart  
Rachael Hayden  
Erica Hayes  
Deb Henry  
Anne Heros  
Erin Higgins

Peg Hillman  
Christopher Hoffman  
Lisa Howell  
Penelope Johnson  
Mary Jones Cobb  
Adam Kalenderian  
Maureen Kearney & Tom Dunlap  
Maureen Keeley  
Mala Chartier Keene  
Linda Kelly  
Kids who've lost their Dads  
Abigail Koren  
Hazel Koziol  
LaMia LaFlamme  
Lamb Family  
Rosella Landers  
Lori Lareu  
Larson/McIntosh/Bartlett  
Christmas Giving  
Mark & Lyndell Lavigne  
Gary & Bobbi Leighton  
John Lennon  
Amanda Libby  
Robbie & Angela Libby  
Christine Linnehan & Earth Day  
Our Local artists & venues  
Loved ones lost  
Love, Forest City, & Friends  
Tom MacKenzie  
Jacob MacKinnon  
Maine Eye Center Employees  
Mainers helping one another

Melissa Marden  
12 Years of Markathon  
The Markathon  
Matt & Kasie  
Douglas & Tara McFad  
Grayson & Morgan Merrick  
Owyn Merrick  
Robyn Merrill  
Sheldon & Susan Merrill  
Lisa Morin  
Sydney Morin  
Xander Morley  
Taylor Moynihan  
Kay Nee  
Owen & Olivia Newman  
Dennis & Mary O'Brien  
Paul & Fran O'Brien  
Cathleen O'Donnell  
Emily Osswald  
Sam Anderson & Overnight Low  
Our first & last responders  
Pietrina Owens  
Joe & Katie Paine  
Partners Bank  
Rev. Robert P. Patterson  
Steve Peterson  
Players & coaches of youth/HS  
sports who had to pivot or miss out  
this season due to the pandemic  
Portland Public Library Youth  
Service Program  
Beth Quinlan  
The Rand-Vamvakias Family



“I can’t think of a more worthy cause to put my efforts behind than helping a child (and their family) navigate through the emotions of loss and grief. The impact CGC can have in the lives of those working to heal is profound.”

**Pete DeWitt,**  
**Center Board Member**

**In Memory**

David Robinson	2020!	Brandon Brown	Jake P. Dupuis	Drew Hill
Rowles Family		Ellen Bruns	Fred & Marilyn Durst	Samuel Hooper
Carolyn Sanford	Al & Jean Ahonen	Hunter Bradford Burke	Christopher Joseph Fabian	Eckart Horn
Michael Sirois	Anne Akeley	Nathan Calhoun Stewart	George Farwell	Nancy Record Howell
Barney Skolnik	Mike Allen	Sean Charles & Shelley Alice Calvert	Rita Ferri	Tracy Howell
Arthur & Judi Slotsky	Marie Almy	Joseph Carignan	Molly Fitzpatrick	Olivia Howland
Grace Smith	Blain Alves	Amanda Lin Carr	Mike Fogarty	Arthur F. Hughes
Leslie Smith	Cathy Anastasoff	Ryan Carter	Matthew Foster	Craig A. Hutchins
Roberta Smith & Family	Molly Anderson	Andre Casavant	Rick Fox	Kelli Hutchison
Smithwick & Mariners Insurance employees	James Winston Armested	Ashley Castle	William Freeman	Danny Hyatt
John & Mary Snyder	Tom Axelsen	Dana & Troy Chartier	Lois Funderbunk Murphy	Griffin Carlisle Iceland
Laurie & Foster Stewart	Sandy Bailer	Mike Churchill	Peggy Furey	Christina Ishibashi Bonner
Timothy Stickney	Joe Barbarino	Heather Cilley	Richard Gagne	Ann Jalbert
Patricia Stone	Bruce D. Bartlett	Bernard & Jeanette Cody	Mark Gaudet	Raina Jensen
Nancy Sullivan	Amy Bartlett Hewitt	Dr. Gregory Collins, MD	Harvey Gerry	Francis Johnson
Michael Swartz	Antoinette Battisi Rogers	Sharon Connally	Dennis Gervais	Sue Kajander
Kathy Swienton	Spencer Bean	Darren Sean Cook	Joan Gibson	Elaine Katen-Jordan
The strength of grieving parents	James Beaudry	Mary E. Corbin	Andy Gill	Peggy L. Keach
The Toelke Family	Ethan Beck	Chris Cornell	Michael Gilligan	Sokha Khuon
Kim & Jeff True	Evelyn Belanger	Robbie & Katie Craig	Ruth Bader Ginsburg	Mary Jane Klein
The Tuckers	Glen V. Bellefleur	Sloan Critchfield	Papa Goth	J. Bryan Koran
The Tuesday night crew at the Center	Chester Bennington	Fran D’Agostin	Paul Gray	Connie Korda
Ed Tumavicus, M.D.	Lindsay Berghuis	Gerard ‘Del’ Dellaire	Carylyn Grondin	Myssina Kosnow
Uncle Dave, Roger, Jenny, and Nick	Paul Bigda	McKenna Dempsey	Marc Gurney	Helen Labonte
Kelin Underwood	Harry & Anne Bliss	Sergio DiBenedetto	William J. III Hannigan	Terry Lainer
Wolfgang Van Halen	Joshua James Blow	Jennifer Ann Dickey	Patricia Haskell	Amanda Lamb
The Volunteers of the Center	Hope Bolster	Kieli Dixon	Ann Heath	Gerald Landers
The Well Within Yoga Community	Susan Bolster	Elizabeth Donahue	Bill Hemmens	Marcia Hi-Ho Lane
Page Day Williams	Dom Bongiovanni	Jess Donnell	Richard Herzog	Doris Languet
Sam Zager, M.D. & Tracy Zager	Joseph Bornstein	Dr. John W. Duckworth, III	Amy Hewitt	Esra Lape Isaacson
	Kevin Brady	Althea M.R. Dugliss	Brendan Hickey	Gene Larkin
	Grace Brescia	Susan Dunphy	Dorothy Hill	Barbara Ashley LaRochelle



Jarryd Jay Leeks	Richard O’Brion	Kevin & Rebecca Sloan
Bobby Libby	Frankie Odom	Maureen Smith
Ian MacKechnie	Eric Olson	Jordan Carroll (JC) Smith
Tom MacKenzie	Hilary Orion Feaster	Sally Smith
Mainers who died this year	Shalene Osgood	Zachary Smith
Damian Mantis	Philippe & Lorraine Paquet	Peter Stickney
Rick Marden	James Patterson	Dorothy Stokes
Florence M. Markley	Michael Pearce	Matthew Stone
Joshua Martell	Chad Perley	Barbara Swain
Peter McBratney	James Peta	Kenny Swormpstied
Paul McCarthy	Emily & Carmine Pirone	Arick Tarr
Kenneth McConvey	David Provost	Ludovina Tavares
John McGinn	Ruth Pruitt	John Taylor
Michael McKenna	Bucky & Elizabeth Quinn	Terry Thompson
Kim McLain	Dave Rankin	That one person we’re all missing
Blake George Merrick	John Ridge	Those we have lost
Rachel Metivier	Kenneth Robida	Timothy Thompson
George Mikkelsen	Diana Rodeffer	Anna Maria Tocci
Dr. Wes Mills	William Rogers	Laura Toth
Eileen Minte	Todd Rowe	Amy Tumavicus
John Morgan	Kevin Ryan	Edward John Tumavicus
Peter Mott	Beth Ryder-Kenna	Lindsey Turner
Scott Moynihan	Sarah Sadler	John Vanasse
Stephanie Mull	Jeremy (Amanda) Sandler	Dr. Chandrakant Vasaiwala
Pal & Doo Mullee	Jennifer Scammon	Ronald Villeneuve
Robert Murphy	Joe & Judi Seneca	Rylie Wareham
Donchian Murray	Chelsea Sewall	Jim Watson
John Neuts	Shan The fisherman	Josh Welch
John Peter & Karen L. Niehoff	Norm Sherman	Kerrilyn Welch
Mike HMC Norton	Andy Sirois	Don Wells
The Norton Brothers	Julianna Sirous	Eric Werntgen
Kristen O’Brion	Adam Sliger	Frank & Blanche Whitmore

Laurie Wile
Richard Williams
Brian Wright
David Wright
The Wright Family
Ann Yao
Paul Zarrilli
<b>In-Kind Support</b>
Black Fly Media
Circle K - Cash Corner
Comfort Systems
Bruce Dalbeck & Christine Bennett, M.D.
Estabrook’s
Headlight Audio Visual
IDEXX Laboratories, Inc.
J. Gaudet Associates
Jim Godbout Plumbing & Heating
Kristen Lape
Maine Backflow Prevention
Martin’s Point Health Care, Inc.
Portside Real Estate Group
Project Linus
Jake Rand
Riverside Golf Association
Skillin’s Greenhouses
Systems Engineering
Patrick & Cynthia Veroneau
Walgreens

<b>Foundations</b>	United Way of Greater Portland
	United Way of Kennebec Valley
Bangor Savings Bank Foundation	United Way of Massachusetts Bay & Merrimack Valley
Beim Foundation	United Way of Mid Coast ME, Inc.
Community Health Options	United Way of the Southern Tier
Edward H. Daveis Benevolent Fund of the Maine Community Foundation	United Way Suncoast
Eunice Frye Home Foundation	United Way of York County
The Evelyn S. & K.E. Barrett Foundation	UNUM
Gorham Savings Bank	Virginia Hodgkins Somers Foundation
Greater Portland Council of Governments	
Hannaford Charitable Foundation	<b>Corporate Partners</b>
Health eVillages	<b>Corporate Luminaries</b>
Hospice Fund of the Maine Community Foundation	IDEXX Laboratories, Inc.
Libra Foundation	WEX Inc.
Maine Community Foundation	<b>Corporate Leaders</b>
Maine Health Access Foundation	Health eVillages
Margaret E. Burnham Charitable Trust	The Thomas Agency, Inc.
Matthews Children’s Foundation	<b>Corporate Hearts</b>
Morton-Kelly Charitable Trust	Jim Godbout Plumbing & Heating
Narragansett Number One Foundation	MaineHealth
Roy A. Hunt Foundation	Maine Red Claws
Sam L. Cohen Foundation	Martin’s Point Health Care, Inc.
The Second Abraham S. & Fannie B. Levey Foundation	Patrons Oxford Insurance Company
Smith Family Charitable Trust	<b>Impact Partners</b>
TJX Foundation	David Banks Real Estate Team
United Way of Central & Northeastern Connecticut	Gorham Savings Bank
United Way of Central Ohio	Saco & Biddeford Savings Institution
United Way of Eastern Maine	



Corporate Partners

Bernstein Shur  
MEMIC  
New England Cancer Specialists  
Strategic Media  
Systems Engineering  
Tex Tech Industries, Inc.  
Two Lights Settlement Services, LLC

Corporate Friends

2 Dine In, LLC  
Anthem Blue Cross  
The Baker Company, Inc.  
Baker Newman & Noyes  
Capozza Tile & Floor Covering Center  
Dearborn Group  
Harvard Pilgrim Healthcare  
HM Payson  
Kennebunk Savings Bank  
Norway Savings Bank  
Oakhurst Dairy  
Provencher Fuels  
Royal River Heat Pumps  
Shutterbugs 4 Charity  
Spinnaker Trust

LOVE Gala

AV Experience Sponsors

Headlight Audio Visual

Live Auction Donors

David Blessing  
Bobby Brennan  
David Giampetruzzi  
Walter Hebold  
Enercon Technologies  
Hannaford - Riverside  
Ron Marcotte  
Ryan & Kimberly Marcotte

James Mullen

Shutterbugs 4 Charity

Silent Auction Donors

A Mindful Home  
Allspeed Cyclery & Snow  
Elise Ansel  
B. Good  
The Bear Isle Board Company  
Beauty Mark  
The Bookworm Box  
Boston Celtics Shamrock Foundation  
Boston Red Sox Foundation  
Brickell Men’s Products  
Coastal Maine Botanical Gardens  
Complements Art Gallery  
Custom Built Personal Training  
Cyclemania  
Avner Eisenberg

Freedom Boat Club of Maine  
Grow Your Knowing - Melissa Boyd  
Holland Plastic Surgery & Aesthetics  
Hurlbutt Designs  
Kris Lape Designs  
L.L. Bean

The Lodge at Lincoln Station

Magic Falls Rafting Company

Maine Life Media

Doreen McKenna

New England Revolution Soccer

Erin Ovalle

Sea Glass Frames

Skillin’s Greenhouses

SoMe Brewing Co.

Springer’s Jewelers

The Styled Home by Upscale

Veroneau Insurance

Jessica Verrill

Westport Educational Consulting

Sponsor A Child

Community Bank Match

Androscoggin Savings Bank  
Bangor Savings Bank  
Bath Savings Institution  
First National Bank  
Machias Savings Bank  
Maine Community Bank

Northeast Bank

Norway Savings Bank

Partners Bank

Saco & Biddeford Savings Institution

Skowhegan Savings

Sponsor a Child Donors

Tommy & Rebecca Aceto

Danika Babcock

Ryan Bailer

Robert & Kate Baldacci

Tuck Barclay & Lucy Norvell

Bruce Dalbeck & Christine Bennett, M.D.

Doug & Robin Bibber

Black Fly Media

Wendy Boynton

Peter & Gail Cinelli

Colonial Adjustment, Inc

Chris & Denise Condon

Tracy Coughlin

Douglas Currier

Elizabeth Dalbeck

Steve & Kristen DeCastro

Chris Delamater & Jim Brown

Frederick Demers

Pete & Cathie DeWitt

Janet Duncan

Steve & Shari Elder

Andy & Katharine Estabrook

Stephen Ford

Lori Frazer

Paul Godin

Bernard & Marianne Gorden

Stephen Hart

Robert & Gail Hatem

Deborah Henry & Edith Aronson

Kevin & Katherine Hogan

John & Mary Holland

Julie A. Hopkins

ICEXPRESS, LLC

Tom Isherwood

Michael & Carly Joyce

Bill & Holly Kany

Myron & Sandra Kelly

Thomas & Anne-Mari Kelly

Michael & Carolyn Lane

Mary Larkin

Richard & Jackie Leach

Christopher Leighton

Eric & Lindsey Lessard

Paul & Janet Letalien

Christine Linnehan

Katy Littlefield

Eoin & Louise Lynch

“Having a space that accepts you wholly, exactly as you are, and regardless of where you may find yourself on your journey through grief, is an incredibly powerful gift—one that became especially important to me after losing my dad four years ago. I am a “Friend of Hope” (monthly donor) because they offer this very special space for so many. Their work is essential in providing hope, healing, and acceptance for those experiencing grief and loss.”

Ashley Bigda,  
Friend of Hope



Doreen Maxwell

Margo McEwen Pepper

John McGrath

Doug McKeown

Jerry & Lisa Morin

Sydney Morin

Joshua & Marci Murphy

Paul & Frances O'Brien

Cathleen O'Donnell

Brian & Heather Paquette

Nelson & Toni Parise

Jeannine Pendergast

Timothy Peterson

Mark A. Pettingill

Erin Powell

John Reed & Elyse Tipton

Mark & Amanda Rand

Gary & Cathy Robinson

Janice Rogers

Brian & Paula Saabye

Gerard & Colleen Salvo

James & Lorraine Schwellenbach

Mary Shields

Kimberly Simard

Tim & Karen Stebbins

Larry Stoddard

Keith Tiszenkel

John Towers

Scott & Kylie Tremble

Ed & Megan Tumavicus, M.D.'s

Two Lights Settlement Services, LLC

Michael & Andrea Vail

John VanLonkhuyzen & Nicola Morris

Lance & Gina Vardis

Samip Vasaiwala, M.D. & Shikha Vasaiwala

Daniel & Kathleen Ventura

David Warren

Jack & Amy Wu

Stephen & Elizabeth Wyman

Jack & Darnell Yao

Sam Zager, M.D. & Tracy Zager

Michael & Janice Zurlo

Swing“Fore” the Center  
Tournament Sponsors

Title Sponsors:

MaineHealth

The Thomas Agency, Inc.

Lunch Sponsor:

Patrons Oxford Insurance Company

Driving Sponsor:

SHP Management Corporation

Tee Sponsors:

Acadia Lending Group

Approved Home Mortgage Inc.

Baker Newman & Noyes

Baldacci Consulting Group

Bernstein Shur

Bigelow Investment Advisors

Boulos Asset Management

CorpHousing Group, LLC

Joe Delois Foursome

Gorham Savings Bank

Granite State Development Corporation

Great Falls Marketing

Jim Godbout Plumbing & Heating

Tim McAteer, M.D. Foursome

National Housing Insurance Group, LLC

Old Port Advisors

Pierce Atwood Foursome

Porta & Co.

Puritan Medical Products

Rogers Norton Wealth Management - Raymond James

Saco & Biddeford Savings Institution

Green Sponsors:

Acadia Benefits

Casco Federal Credit Union

PM Construction

In-Kind Golf Donors:

Allagash Brewing Company, Inc.

Nestle Waters North America

Virtual 10K

Emily Adour

Charles & Brenda Bacall

Katie Bacall

Parker Bacall

Robert & Kate Baldacci

Anna Ballard

Jillian Ballard

Martha Beals

Taylor Bechtel

Ariel Bendall

Cindy Blais

Patrick & Ann Marie Briggs

Naomi Brown

Kristie Burns

Amalia Bussard

Thalia Bussard

Kevin & Corrie Calderwood

Ashley Calkins

Elisabeth Campbell

Haley Campbell

Kim Campbell

Mary Campbell

Tracy Cassidy

Meg Castagna

Sarah Castle

Joseph & Erika Charpentier

Roz Chast

Alex Collins

Jennifer Connors

Ben Corn

Gretchen Cullenberg

Betti Curran

Vanessa Darling

Aretha Delight Davis

Randolph Del Rossi

Maggie DePoy

Ryan Dromgoole

Peggy Dry

Samantha Duckworth

Michael Dugay

Tom Dunlap & Maureen Kearney

Caroline Epperson

Luke Filipos

Sarah Finne

Bill Franzen

Ian Franzen

Mimi Freundlich

Lindsay Friberg

Maeve Geer

Jay S. Geller

Kate Gervais

Priscilla Gill

Virginia Gill

Doris Gnauck

Betty Ann Green

Jaime Green

Karla Green

Kyle Green

Ryan Green

Stephanie Hadaway

Ellie Hahn

Meg Hahn

Katie Hankinson

Liz Hannigan

Cynthia Hansmann

Alan Haymond

Barbara Henneck

Meg Hirschfeld

Telly Hoimes

Ryan Houska

Abby Irish

Edith Iyer-Hernandez

Sara Jacobson

Stephen Judicd

Darlene A. Junker

David Kaiser

Maureen Keeley & Cheryl Greaney

Wyatt Kilburn

Abigail Nicole Koren

Karen Koziol

Cindy Kralik

Kara Kralik

Melanie Krum

Colin & Amanda Lamb

Kristen Lape

Karin Lash

Margaret Lesage

Gregory & Stephanie Lull

Colby Mahoney

Tracie Markell

Janis Marty

Tess Maurici



“We have had several members of our staff go through situations or have had loved ones experience loss at a young age. Knowing how devastating this is and the huge need for people to come around these children, teens and young adults, we want do whatever we can to support the great work that’s being done at the Center. The need is great in our community and the Center is rising to the challenge.”

**Jud Blake,**  
**General Manager at 2DineIn**

Nicole McLaughlin	Christine Sheetz
Frederic Merrick	Lauren Silver
Clifford Mitman	Margo Silverman
Halliday Moncure	Deb Smith
Lora Moncure	Mal Smith
Cheri Mueller	Debbie Stevens
John Brooks & Jennifer Mull-Brooks	Hugh Swingle
Devon Mulligan	Marilyn Urbano
Megan Murrow	Rebecca Vitali-DeCola
Betsy Nejman	Marguerite Walsh
Aprill Newman	Karen Ward
Mariatu Okonofua	Christine Williams
Sara Olsen	Nanci Williams
Rick Olson	Tandy Wilson
Richard Page	Linda Yellin
Jon Perkins	Josh & Jana Zager
Tom Perkins	Linda Zager
Frances Peterson	Sam Zager, M.D. & Tracy Zager
Barbara Phelan	
Barbie Philbrick	
Margaret Philbrick	2 Dine In, LLC
Linda Pickard	David & Amy Abel
Michelle Pride	Vinnie Aceto
Lindsey & Kim Pryor	Jake Adams
Joanna Reatiraza	Michael Aikin
Nancy Ricker	Susan Alexandre
Mish Ritchie	Matt Allaire
Katy Rockefeller	Chuck Alpern
Sue Schenning	Jessica Alvino
Joshua Schultz	Kathy Andreasen
Leelie Selassie	Adam Armstrong

**Markathon**

Dan Arnault	David Bloom	Amanda Cronin
Atlantic Furniture & Reupholstery	Jonathan Boisvert	Arthur Crosby
Aura	Danielle Borrelli	Jenna Croteau
Jake Austin	Dominic Borrelli	Jeremy Cummings
Liz Bacon	Ricjason Boucher	Monique Cummings
Paul Baker	Derek Breton	Gerard Curdo
Margo Barajas	Mike Breton	Marcus Curit-Kurasz
Holly Barber	Chad Brown	Chelsea Cushman
Brett Barker	Duane Bruce	Catherine Dadiago
Elijah Barker	Paul C. Burgos	Joe & Jessica D’Agostin
Matt Barry	Amy Buxton Jewell	Lynda D’Amico
Susan Bartlett	Capital Consulting Partners	Will & Caitlin Damon
Michael Bartshe	Nicholas Carll	Veronica Dansereau
Graves Bates	Jeannette Carr	Charlie Davis
Thomas Beach	Robert Carter	Shannon Day
Melissa Beall	Casco Federal Credit Union	Jody Dekubber
Natalie Beaton	Michele Cecere	Verity DeLong
Brian Beauchemin	Rob Chalou	Lincoln Denison
Sydney Beckwith	Sam Chick	Phil Denoncourt
Nicole Bedard	City Kitties	Andrea Deschaine
Patrick Beggs	Kelly Clarke	Adam Desorcy
Nick & Michaela Belair	Austin Coco	Dana Dinovan
Charlene Bellenger	Andy Collins	Wally Dixon
Aaron Bergeron	Joshua Collupy	Dana Donovan
Holden Bergeron	Natalie Corbin	Ashley Doyle
Matthew Bernier	Savannah Cormier	Atlanta Duclos
Jamie Betgen	Matt & Kesley Cosby	Kathy Dudley
Ryan Binette	Christen Cowper	Joe Dunbar
Amy Black	Marti Cox	Brittany Dunham
Larry Blanchet	Ryan & Andrea Cox	Edward Eastabrooks
Sarah Blank	Thomas Coyne	Peter Farwell



Dean Ford	Josh Harps	Meghan Kalisz
Elizabeth Ford	Brian Harris	Marc Kaplan
Maggie Ford	Stephen Hart	Mason Karter
Marjorie Ford	Rachel Hasty	Nathan & Donna Katsiaficas
Tashonda Ford	David Henault	Gary Keene
Matt & Jenn Fortin	Michael Hendry	Corrina Kellam
Brian Fox	Deborah Henry & Edith Aronson	Tina Killinger
Alex Fraktman	Anne Heros	Lily King
James & Alison Gallagher	Trevor Hesketh	Shane Kinney
Bryan Gallant	Julie A. Hopkins	Heidi Kirn
Brandon Geer	Kyndra Hopkins	Mary Anne Klement
Cheryl Gerrish	Jen Horton	Dan Koeppel
Gregory Getchell	Allen Hovey	Teresa Konczal
JoAnna Gignac	Renee Howard	Casey Krotz
Travis Gilbert	Turner Huston	Theresa Lofgren
Sheridan Giordano	Jessica Hyland	Shane Lafontaine, Jr.
Devin Giroux	Chuck Igo	Jason Lang
Debbie Glanville	Edward Ingraham	Jordan Lang
Golf & Ski Warehouse	Shawn Jalbert	Stephen Lankford
Andrew Govatsos	Shawn Jeffery	Christopher & Maureen Lasalle
Ashley Gray	Lisa Johnson	Jeff Lebida
Todd Hagerman	Thomas & Justine Johnson	Monalee Legassie
Alan & Donna Hahnel	Lorraine Johnstone	Brandy Letourneau
Kenya Hall	Matt Jolin	Ryan Libby
Mark Hamilton	Chris Jordan	Greg & Kelly Lloyd
Tammy Hamilton	Karen Jordan	Lone Pine Brewing Co, LLC
Luke Hammond	Jesse Joy	Tom & Sarah Long
Katelyn Hanscom	Damian Joyce	Neil & Suzanne Lowell
Greg Hanson	Molly Joyce	Lauren MacKenzie
Mark Hare	Danielle Julianello	Andrew & Dena MacVane
Russell Harmon, Jr.	Adam & Bethany Kalenderian	Rosemary Mahoney

Even Makara	Shaun Morrison	Stephen Peterson & Kathleen Swienton
Joshua Mangin	Jennifer Morse	Angelica Philbrook
Philip Mantis	Emily Mott	Anne Pickering
Bailey Marden	Mountaineer Property Group, LLC	Aimse! Ponti
Levi Marden	Nicole Muise	Pork in the Beans Productions Inc.
Melissa Marden	Kevin Murphy	Portland Glass
Bob Marley	Erik Murray	Mike Price
Rick Martell	Marcie Nason	Elizabeth K. Provost
Melissa Martin	Adam Nichols	Kristin Ramby
Nicholas Martin	Alis Nicolau	Miranda Rampone
Suzanne Maurais	Lori Nolin	Kevin Rancourt
Michelle L. McCarter	Suzan Norton	Brittany Rand
Andrew McCaw	Tatiana Nossova	Michael Rautenburg
Kevin McCord	Julia Noyes	Paul Robbins
Jacob McCurdy	Holly Nunan	Mike Robinson
Reed McDermott	Patty O'Brien	Jacob Ronald
Tim McLain	Paul & Frances O'Brien	Courtney Roy
Nikki McNerney	Cathleen O'Donnell	Ruski's Tavern
Alan Merrick	Dewey Ogg	Mike Sambrook
Braden Merrick	Dylan Orr	Dominick Santise & Joanna Colombo-Santise
Erwin Merrill	Kevin Palmer	Kevin Sapiel
Steve Messenger	Thomas Parenteau	John Sawyer
Robert Miles	Nelson & Toni Parise	Peter Sawyer
Norman Miller	Partners Bank	Mark Sayer
Owen Miller	Tracy Payne	Ed Schnopp
Jason Mongue	Elizabeth Peary	Duane Sherman
Kenneth Moon	Nick Pellegrino	Phil Sherman
Rita Moore	Heidi Penney	Brian Shertzer
Stacy Moore	Matthew Perkins	Charlie Simmons
Jerry & Lisa Morin	Martha Petersen	Sean Slaughter
Steven Morissette	Jennifer Peterson	Kate Slocum



Elena Smith  
Erin Smith  
Lenny Smith  
Tyler Smith  
Mark Snowden  
Scott Sorry  
Jill Soule  
Dave Sparks  
Brian Sprague  
Christopher Sprague  
Chris Stansel  
Everett Staples  
Will Staples  
Andrew Starr  
Paul Steer  
Jessica Stevens  
Joshua Stevens  
Mathew Stevens  
Kayla Stewart  
Robyn Stinson  
Jen Stuart  
Maria Sullivan  
Ryan Sullivan  
Ed & Pam Szalajeski  
Karen Szalajeski  
Matt Taylor  
Taylor Made Event Services, LLC  
Matthew Tefft  
Devin Temple  
Lynne Tetreault  
Steve Theo

Stephanie Thibodeau  
Andrew Thomen  
Robyn Thurber  
Genevieve Tiernan  
Katryna Treuhaft  
Truck Schmucks  
Cindy Turnbull  
Kirstin Underwood  
John Vaccarello  
Jessica Van Dyke  
Don Vellani  
Derek Viger  
Andrew Vinal  
Laura Vinal  
Erin Vivar  
Emma Walker  
Shelley Walker Rosen  
Michelle Warneke  
Craig Weaver  
Deanna Weaver  
Leara Webber  
Shelby Westman  
Emma Whelchel  
Maggie Williams  
Cosy Wilson  
Jody Winant  
Kyle Winn  
Melissa Woodbury  
David Woods, II  
Rebecca Woods  
Noah Wright

Jack & Amy Wu  
Janet Wyman  
Gerry Zarrilli  
Siena Zerillo  
Cody Zimmerman

## Family Movie Night 2020

### Presenting Sponsors

Provencher Fuels  
Saco & Biddeford Savings Institution

### Supporting Sponsors

Northern Light Mercy Hospital  
Stone Coast Fund Services

### Program Sponsors

Haley's Metal Shop, Inc.  
Norway Savings Bank  
P & C Insurance

## Family Movie Night 2021

### Presenting Sponsors

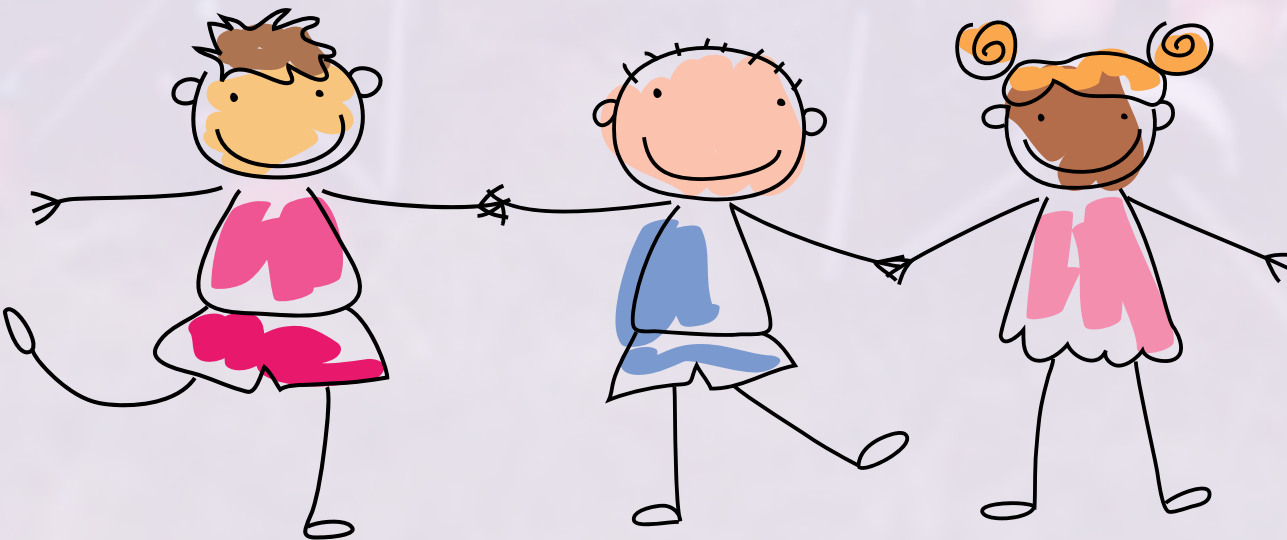
Provencher Fuels  
Saco & Biddeford Savings Institution

### Supporting Sponsors

Northern Light Mercy Hospital  
ProSearch

### Program Sponsors

Baldacci Consulting  
Haley's Metal Shop, Inc.  
New York Life Insurance  
Norway Savings Bank  
P & C Insurance  
Sun Life Financial





# Thank you to all our Volunteers!



## Facilitators

- |                      |                         |
|----------------------|-------------------------|
| Lynn Abood           | Gail DiBiase            |
| Joanne Abrams        | Emily Drummond          |
| Danielle Alexander   | Donna Duffy             |
| Keely Andersen       | Janet Duncan            |
| Megan Arseneault     | Hannah Durham           |
| Paul Attardo         | Kimberly Eames          |
| Campbell Badger      | Lillian Eckstein        |
| Ryan Bailer          | Sue Ford                |
| Chris Balzotti       | Marjorie Ford           |
| Jen Beck             | Paul Forman             |
| Sarah Benesi         | Michelle Foster         |
| Jessa Berna          | Leah Foti               |
| Gisele Biron         | Cheryl Fullerton        |
| Henry Bliss          | Matt Gee                |
| Mary Bracken         | Laine Geistwalker       |
| Ann Marie Briggs     | Lynnis Gendron          |
| Kate Brown           | Bethany Gilpatrick      |
| Renee Bunker         | John Goetz              |
| Rebekah (Beka) Burns | Douglas Green           |
| Linda Card           | Mary Griffin            |
| Pamela Cardin        | Tanya Grigsby           |
| Dawn Cedrone         | Kyia Grimshaw           |
| Caitlin Cleary       | Steph Haines            |
| Sam (Samuel) Coleman | Steve Hart              |
| Heather Corey        | Alyx Hannigan           |
| Valerie Craig        | Charles (Chuck) Henegar |
| Thomas (Tom) Crane   | Deb Henry               |
| April Cummings       | Brandelyn Hodgdon       |
| Skye Danler          | Lynne Holler            |
| Leslie DeGeorge      | Maureen Keeley          |
|                      | Francoise Kinney        |





Hazel Koziol  
Laurel Ladd  
Lillian Lake  
Carolyn Lane  
Rebekah (Bekah) Legaspi  
Helen Lonnegan  
Jim Maier  
Kate Malia  
Margo Mallar  
Joan Martay  
Erin Mellor  
Sue McCulley  
Marty McGannon  
Paul Menard  
Stephanie Morris  
Michee Mpela  
Peg O'Brien  
Cathleen O'Donnell  
Maureen Olsen  
Cathy Paglio  
Mary Pannier  
Toni Parise  
Suzanne Patterson  
Galen Perkins  
Martha Petersen  
Christine Peura  
Sheryl Plummer  
Claire Prescott  
Jessica Porter  
Matt Purinton  
Wendy Ray

Jori Rynberg  
Carolyn Sass  
Judy Savage  
Maeve Shea  
Jay Sherwin  
Linda Siglock  
Karen Simpson  
Frank Sinnock  
Judith Slotsky  
Tristan Smaldone  
Cassidy Smith  
Leslie Smith  
Sydney Sprague  
Rebecca Stamaris  
Jennifer Stockless  
Pat Stone  
Ed Szalajeski  
Nova Tower  
Hannah Towers  
Karl Trautman  
Lindsey Tucker  
Mary Villano  
Linda Waite  
Beth Westra  
Stacey White  
Carolyn Woodworth  
Drew York  
Heather Young  
Liana Zaborowski  
Nichole Bassett

Program Interns

Kayla Blackborow  
Connor Bry  
Emma Henson  
River Hodgdon  
Tiarra LaPierre  
Erin Powell  
Carrie Ryba  
Kelli Visconte-Shutt  
Shelby Westman

Office Volunteers

Susan Brennan  
Anne Foster  
Kati Glencross  
Grace House for Women  
Eva Kecskemethy  
Kim Marcotte  
Maryellen McCone  
Wendy McLoon-Waterman  
Rosemary Muir  
Kirsten Ness  
Fran O'Brien  
Ashley Owens  
Sue Purkis  
Marguerite Rubino  
Andrew Schmid  
Lindsey Tucker  
Grace Tumavicus  
Walton House

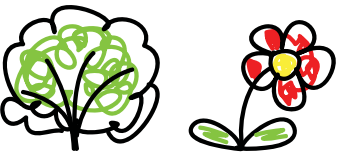
Event Volunteers

Tori Bacall  
Robert Baldacci  
Kelly Barton  
Ally Behn  
Ashley Bigda  
Ann Marie Briggs  
Belamy Brophy-Baermann  
Connor Bry  
Jenilee Bryant  
Haley Campbell  
Sarah Castle  
Erika Kling Charpentier  
Kenneth Chen  
Leslie DeGeorge  
Katie Estabrook  
Becca Foley  
Mallory Gould  
Teg Griffiths  
Emma Henson  
Bridget Hester  
River Hodgdon  
Katie Hogan  
Kathleen Judice  
Rajna Kecojevic  
Maureen Keeley  
Abby Kling  
Ginny Kling  
Jaime Kling  
Abigail Koren  
Hazel Koziol

Tiarra LaPierre  
Janet Letalien  
Kim Marcotte  
Garrett Mitman  
Siena Mitman  
Terry Mitman  
Halliday Moncure  
Rose Mary Muir  
Olivia Mull  
Jen Mull-Brooks  
Jack Niles  
Scott Ordway  
Katelyn Parsons  
Halli Perrigo  
Erin Powell  
Marguerite Rubino  
Kathy Ventura  
Wendy Waterman  
Shelby Westman  
Sam Zager

**\*We try our best to accurately reflect all of our supporters that help make our programming possible this past year. Our sincere apologies if we omitted your name or misrepresented you. We welcome you to please reach out to let us know of any error.**

**Contact [patty@cgcmaine.org](mailto:patty@cgcmaine.org) if you view an error on our donor list.**





# Save the Date!

## Volunteer Info-sessions

Monthly (Contact [volunteer@cgcmaine.org](mailto:volunteer@cgcmaine.org) to sign up for the next one!)

## National Children's Grief Awareness Day

November 18th, 2021

## Swing "Fore" the Center Golf Tournament

September 14th, 2021

## #GivingTuesday

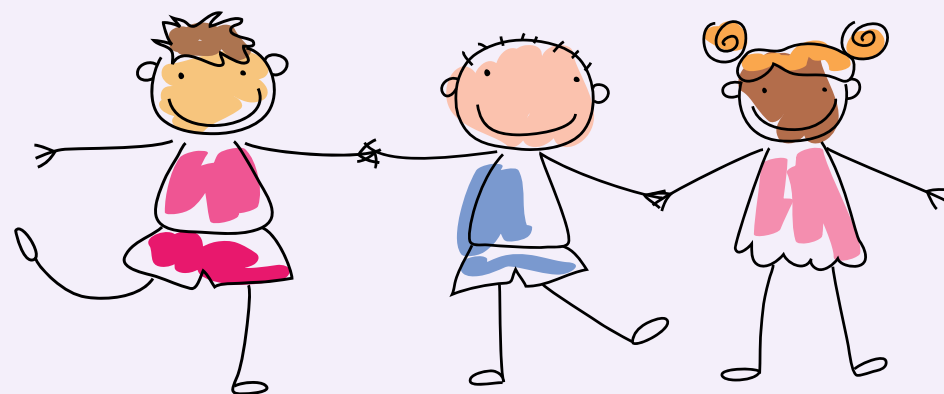
November 30th, 2021

## National Children's Grief Awareness Month

November 2021

## LOVE Really Counts Gala

February 4th, 2022



**Call / Email**  
(207) 775-5216  
[cgc@cgcmaine.org](mailto:cgc@cgcmaine.org)

**Visit Portland**  
555 Forest Avenue  
Portland, Maine 04101

**Visit Sanford**  
893 Main Street  
Sanford, Maine 04073

**Connect**  
  