



Annual Report

2020



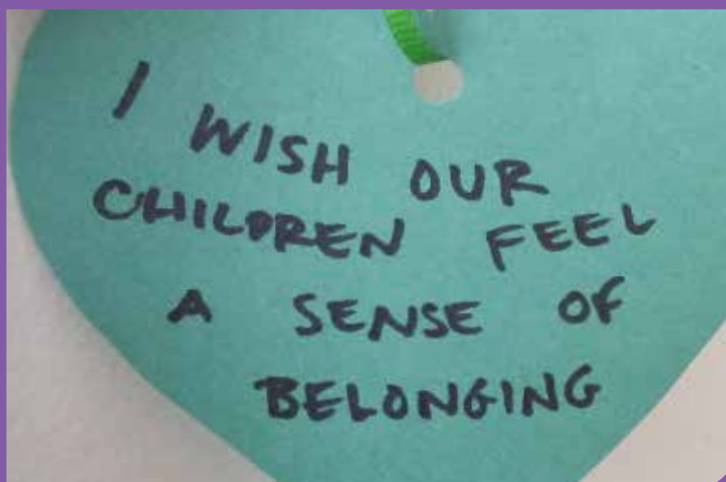
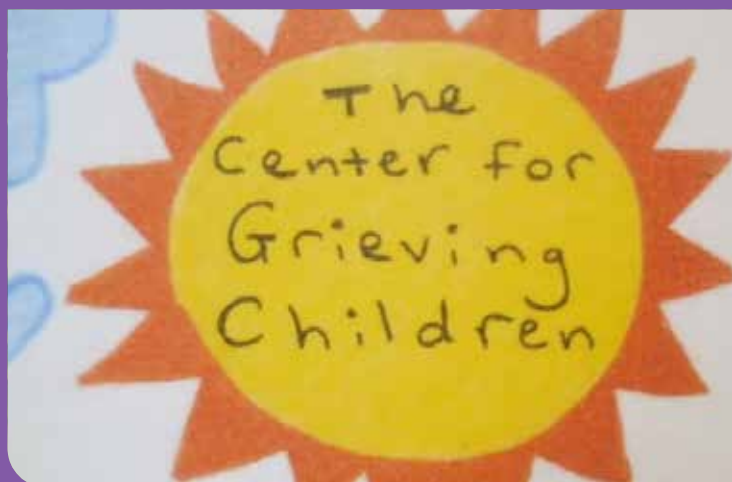


the
center for
grieving children

where families find hope and love

From the Heart

OUR 2020 REPORT
TO THE COMMUNITY



Mission

The Center for Grieving Children provides a safe space, loving peer support, outreach, and education to grieving children, teens, families and the community.

Vision

The Center for Grieving Children offers hope and supports the resilience of children, teens, and families through a peer support family model. Its no-cost services are led by dedicated and highly trained staff and volunteers on-site at the Center's facilities thanks to the generous support of our community.



Dear Friends:

What a year it has been here at the Center. As with every facet of life, the Covid-19 pandemic turned the way the Center serves its families upside down. Our ability to adapt as an organization has never been more important. In early March, to protect everyone's health, all in-person meetings were suspended and staff moved to working from home. Shortly after, I created an ad hoc workgroup comprised of staff and several Center Board members to identify a secure, HIPAA-compliant online option for our groups to meet virtually. As a result, I am thrilled to share that we have continued providing our three pillars of programming and outreach to the greater Maine community by temporarily moving groups to a virtual platform until it is safe for us to return to in-person.

The Center continues to be the ONLY of its kind in Maine providing year-round peer support in a family model in our Tender Living Care (TLC) and Bereavement Programs, as studies show that the better parents cope, the better children do. We continue our wonderful partnership with Portland Public Schools to ensure the success of our Intercultural Program as well.

The demand for the Center's bereavement services only continues to escalate. Prior to Covid-19, waiting lists existed for families to join when space opened. Since launching virtually, our peer support groups continue to have new requests to join weekly. We have added extra groups to help meet families' needs. We cannot forget that things are still happening that wreak heartbreak in our community. There is still death by suicide, there is still a high incidence of overdose loss, there is still grief. There are still families trying to grow from their loss; to experience "post-traumatic growth"—that despite experiencing a shattering reality, they entertain the possibility of something new and meaningful evolving from it. This pandemic is yet another layer, upon which this is going to be an extra struggle. Our families are stretched now more than ever. The isolation that we are all experiencing can be even more challenging for our grieving children, teens, and families.

There is one thing I wish you to know right now. Our hearts are with you. I have heard from our Center families whom have shared their longing to resume their time within our four walls. We are doing everything to make this our priority. To determine how we can keep our families safe, we are taking a hard look at our physical space and will need to redefine the way children do play in our groups.

While I know that many of us find ourselves anxious and frightened, confronted with unanticipated challenges, we are committed to providing the same level of service to grieving families. I am hopeful that the challenges presented during these unprecedented times may present new opportunities for the Center to innovate to reach new families who otherwise

would not have been reached, and develop new fundraising efforts to offset the 34% of our revenue that has historically come from in-person events. Going forward, I am hopeful we will serve as an even brighter beacon of hope for grieving families.

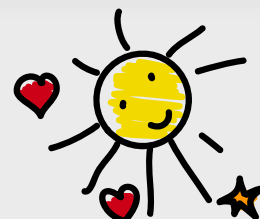
More than ever, I am thankful for our Board's leadership, our facilitator's hearts, and our staff's creativity and hard work. I am forever grateful for the trust of our families and the philanthropic support of our larger community as the need this year is greater than ever before. We will get through this together and stronger.

With Gratitude,

- Anne Heros
Executive Director



Anne Heros
Executive Director



Resilience: belonging. support. hopefulness. - - - - -

Advisory Board

Christine Bennett, M.D.
Gail Cinelli
Kathy Crispin
Joe Delois
Michael Dubyak
Shawna Ohm
Gary Robinson
Abdimajid Sharif
Melissa Smith
Andy Stickney
Will Stiles
Rev. Jacob Watson, D.Min.

Staff

Anne Heros
Chelsea Amaio
Sara Asch
Mary Bristol
Cathy MacKinnon
Lisa Morin
Claudette Ndayininahaze
Patty O'Brien
Monicah Paquette (AmeriCorps)
Beth Quinlan
Sara Reddick
Jamie Schwellenbach
Marie Sheffield
Emma Walker
Florence Young
Janice Zurlo

Consultants/Trainers

Peg Dineen
Mary Donahue
Beth Elicker
Linda Kelly
Christine Linnehan
Connie Palys
Bruce St. Thomas
Shelley Walker Rosen

Board of Directors

Julie Grosvenor MD (President)
Physician & Associate Chief Medical Officer
Southern Maine Health Center

Mary Larkin (Vice President)
President
Diversified Communications, USA

Kevin Chase (Treasurer)
Audit Manager
Baker Newman Noyes

Robert Baldacci (Secretary)
Consultant
Baldacci Consulting Group

Abdullahi Ahmed
Assistant Principal
Deering High School

Sandra Bagwell, M.D.
Director, Pediatric Intensive Care Unit
Maine Medical Center

Jenilee Bryant
Marketing Director
Two Lights Settlement

Christopher Cimino
Executive Vice President
C.M. Cimino, Inc.

Peter Dewitt
Head of Talent Marketing and Community
Relations
IDEXX

Katherine Hogan
Vice President/Sales Agent
Legacy Properties Sotheby's Int'l Realty

Peter Herzog
Past President
Shareholder
Bernstein Shur

John Holland
Former Director, Inside Sales and Customer
Service for North America,
Sappi, North America

William Kany
Senior Vice President, Director of Legal &
Government Affairs
Saco & Biddeford Savings Institution

Thomas Kelly
Vice President, Finance
Hannaford Supermarkets

Catherine Lamson
Senior Vice President, Chief
Administrative Officer
MEMIC

Sara McLaughlin
Accounting/Finance Consultant

Nicola Morris
Senior Vice President, Corporate Development
WEX

Diana Nelson
Principal
Black Fly Media

Jeannine Pendergast
Senior ESOP Client Advisor
Spinnaker Trust

Mark Pettingill
President & Chief Executive Officer
Patrons Oxford Insurance

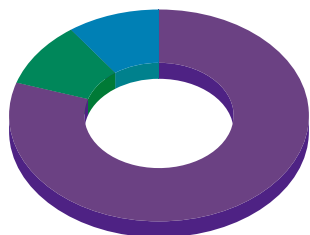
Gerard Salvo
Senior Human Resource Manager
TideSmart Global

Shikha Vasaiwala
KMA Human Resources Consulting

Cindy Williams
News Anchor
NEWSCENTER Maine

Mike Wilson
Executive Vice President/Chief Operating
Officer
Great Falls Marketing

Financial Statistics



EXPENSE ALLOCATIONS

Program Services: 81%

General Fundraising: 9%

Management and General: 10%

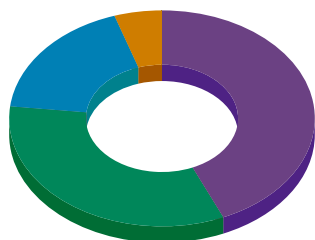
EXPENSES

Program Services: **\$933,301**

Management and General: **\$107,476**

Fundraising: **\$118,416**

Total Expenses: **\$1,159,193**



REVENUE BY SOURCE

Individuals: 45.43%

Events: 34.27%

Grants: 19.97%

Other: 0.33%

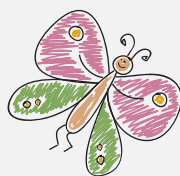
REVENUE

Revenue from Services: **\$0**

Contributions, Grants, Events, &
Community Support: **\$1,060,961**

Investment Gain: **\$--**

Total Revenues: **\$1,060,961**



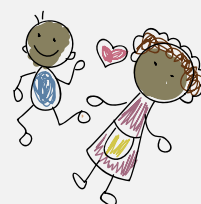
942
individuals Served by
Phone Support
and email



30 minutes
Average time of
phone contact

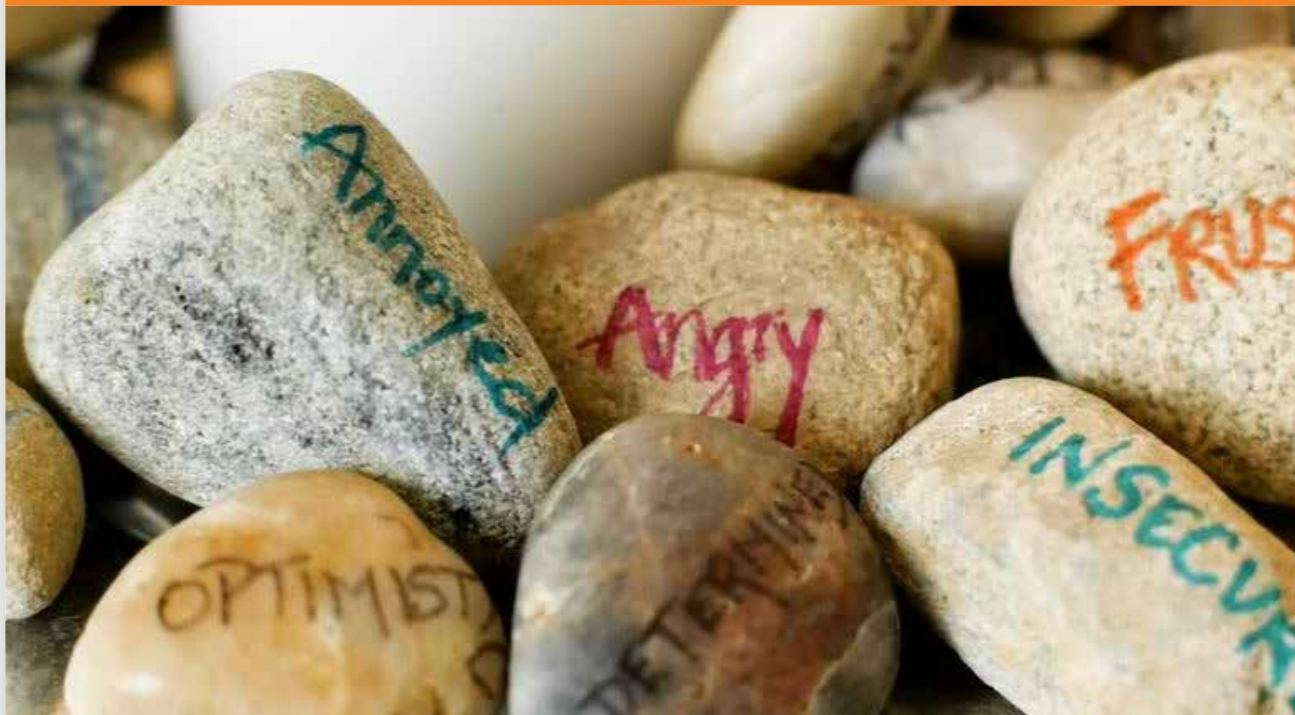


675
People Helped One Another
Through Peer Support



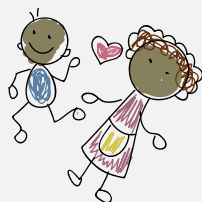
2059
individuals served in outreach
and education

Overview



Little did we know that early March was pivotal in the Center's history. Like many organizations, we closed our doors for what we thought would be two weeks to determine how we could reopen safely to restart in-person peer support groups. Today, while our staff is still working remotely, our doors are far from closed.

Since March, the intense situation of COVID-19 has led to a community-wide mourning. Perhaps we are grieving the loss of a loved one or maybe we are experiencing grief associated with our collective search for normalcy. Since the onset, many families experienced a loved one's suffering in the hospital, yet were not able to be with them. Countless young people anticipated their final stretch of senior year and the anticipated rights of passage that come with it such as prom and graduation ceremonies; all missed. People's loved ones died at a time that funerals were either not possible or drastically limited. So right now, the community mourns. Here at the Center, we are doing all we can to support and acknowledge that grief and the Center community. An individual's mental health is prime for a healthy community.



Our Response to Covid-19

Our program team has worked tirelessly to transform how our Center operates to continue meeting the needs of families and children during these uncertain times. We have maintained regular, ongoing engagement with our facilitators and families, reaching out through email and calls. We have never stopped responding to new requests for support, referrals, and general grief and loss related information from the community by email and phone.

We have also developed a section of our website dedicated to Covid-19 resources. We have now launched our full schedule of services with facilitators and families online, serving all children, parents, and adults who wished to utilize online groups. Groups are still broken out age-appropriately for children 3-18 to tailor groups to particular ages and levels of desired participation, and for their parents/caregivers, young adults 19-30, and people who have lost a partner or spouse. The response from facilitators and families has been very positive as we all adjusted to this new way of communicating.



**Everything is happening at a distance
which is so... it seems so unnatural as
human beings. We're geared for touch.
We're geared for being close to each other
and community.**

- Steve Hart

Peer Support Facilitator,
during an interview with WGME in April

Our Response to Covid-19

Week of March 16th

- Suspended all afternoons and evenings of service.
- Our Executive Director, Anne Heros shared helpful tips on how to talk with children about the Covid-19 crisis on WMTV News Channel 8.
- Lisa Athan's presented Growing Through Grief, Loss and Trauma: How Grieving Families and Children Can Find Healing, Hope, and Resiliency. 115 individuals attended. In less than one week, we transitioned from in-person to webinar, and expanded focus to include Covid-19's impact on children's emotional wellbeing.



Week of March 30th

- Special IT Task Force appointed to select the most appropriate HIPAA-compliant online platform to provide virtual afternoons and nights of service.

Week of April 6th

- Conducted staff and facilitator trainings on how to use the selected platform.
- Launched virtual peer support groups, starting with Family Nights and adult groups, and expanding to full nights of service for Bereavement and Tender Living Care programs by the third week of April.
- Began a series of "Center Chats" led by our Executive Director, Anne Heros, to offer the opportunity for Center supporters, donors, volunteers and members to hear real-time updates.
- Hosted a virtual Resource Night for Center parents and the public, How to Navigate Stress in Isolation. Former Board President and Peer Support Facilitator, Patrick C. Veroneau, M.S. of



Week of May 18th

- Launched the Intercultural Program virtually, working closely with school support staff and parents.
- Christine Linnehan presented Facing Stigma: Restorative interventions for fostering resilience in children, teens, and families after suicide or overdose loss. 89 attended.



Month of June

- Began Initial Family Meetings virtually.
- Launched virtual volunteer facilitator trainings formerly done face-to-face in our Portland and Sanford office locations. Thank you Linda Kelly and Beth Elicker!
- Held our very first virtual volunteer information session for prospective volunteers. They are now held multiple times per month.
- Wrapped up the Intercultural Program year with a Facilitator celebration - online!



As a school social worker in a school with many immigrant, refugee, and asylum seeking students, I highly value the partnership with the Center for Grieving Children. The Center for Grieving Children Intercultural groups and staff provided kind and culturally-responsive support and interventions during the pandemic akin to the support they provide during the school year. Knowing they were there as a resource for questions and support as well as knowing they were reaching out to families and continuing groups online to students who were able to access them from home, helped me feel like I was not alone in working to support the social and emotional needs of some of our more vulnerable students and families.

-Sarah Beam,
LCSW, School Social Worker

Overview



Providing grief support in our Portland and Sanford locations for children, teens, their parents, families, and bereaved parents and widows/widowers/partners.



We lost my son's father unexpectedly.

On our first night at the Center, I was overwhelmed with the love and support that I instantly felt. The tears came because I knew I was in the right place. I felt comforted. For the first time since his death, I didn't feel alone.

It's hard to describe how the Center's programs work other than they're magic. Yes, there are lots of tears at the Center. But most importantly, there is love, laughter, and support. New families will come and go. We lost our loves to cancer, suicide, drugs, disease, accidents, etc., but we all had one thing in common: grief and the love for our children. I've learned that there is nothing to "fix" here. Grief is a process you go through. You learn to hold your grief and honor it. Our time at the Center has truly changed our lives.

- Shannon Moore,
Former Bereavement Program Participant and current
member of the Center's Development Committee





After my husband Kevin passed away, the Center for Grieving Children has been another piece of this complicated journey toward healing for my daughters and me.

I first wanted to be a part of the Center's Bereavement Program for my two daughters. To complicate the grief they were experiencing from losing their father, Covid-19 has made this ordeal significantly more isolating and challenging. Losing social interaction amongst peers as a result of schools closing was another significant loss my daughters had to mourn. While everyone brings very individual and unique experiences to the group, sharing their losses with other children who can sympathize was huge for my daughters.

Little did I know that I could partake in my own group too. Having to say very little, they understand. I did not realize just how much the Center would touch our lives. The volunteers and participants welcomed us with the understanding and comfort only those who have lost a parent or spouse would understand.

- Jessica Welsh,
Current Sanford Bereavement Program Participant



Overview



Helping children, teens, young adults, parents, and caregivers with the changes that come with a family member's diagnosis of serious illness. Support is available from point of diagnosis and at every step along their journey with the illness.



I learned about the Center as a nursing student. After graduating, I volunteered at the Center for a couple of years and learned so much about myself and the incredible support the Center offered for families.

It never occurred to me that almost 20 years later, I'd be diagnosed with a chronic, painful, physically debilitating illness. Being led back to the Center as part of their Tender Living Care program has been an incredible journey. It is so empowering to have a group of friends that have a unique perspective similar to our journey. There are times of joy and times of emotional and physical pain. There have been friends that have died as a result of their chronic illness or experienced remission, enabling them to take time away from the Center. My children have grown and been supported as they continue to deal with my medical journey. It has given them a safe space to share their feelings, while having the opportunity to support other kids dealing with similar situations. My husband has a group of other Dads and caregivers to share fears and joys with. But always, it's a safe space to share the day to day journey.

The Center has come to be a very special place in my heart. Not just for the opportunity to sit on "both sides of the couch", so to speak, but for the growth that the facilitators have supported in our family, during this journey. There is something truly indescribable about what kind of hope the Center inspires and passes to everyone that passes through its doors. It gives us something to look forward to, to hope for, to dream about, all while on a journey no one really envisions when they think of family.

- The Murphy Family,
TLC Participants

Welcome Moose!

During the year, the Center integrated a certified therapy dog named Moose, into our Tender Living Care (TLC) peer support programming. The dog's owner, Carolyn Lane, was already a trained Center volunteer facilitator.



It is such an honor to participate in the powerful connection between Moose and the families at the Center. In this trusted space, Moose is a catalyst for children to explore a wide range of verbal and non-verbal expression. We especially like to delve into what is similar or different in the ways we all express feelings - even Moose!

As children and adults alike interact with Moose, we emotionally connect more deeply to the other special animals in our lives. Children relay stories of their own pet(s), a grandparent's pet or even a dog in the neighborhood. They enjoy being the expert on that relationship with what it means to them as both a companion and a caregiver. Moose is a reminder of our special bond to our pets and how to strengthen that bond for our mutual wellness.

- Carolyn Lane,
Volunteer Facilitator, Moose's Owner

As the time with Moose concluded, children and families shared the impact Moose had in their groups by creating a book of letters (an example to the right) sharing their experience with Moose. One of our facilitators summed it up best; "It was magic." Moose was a catalyst for families to share their value of pets and open up as they process their own feelings of grief.



Overview

Creating healing communities, the Center's Intercultural Program is for children and teens resettled in Maine from countries that have experienced war, violent conflict, and natural disaster, in collaboration with Portland Public schools and others. At 23 years old, this program is the oldest of its kind in the United States.



Grief is your own journey, and there's no right or wrong way. What we saw in our Intercultural Program was deep isolation. Grief happens differently in different cultures. However, when you feel a sense of belonging and connectedness, and you are with other people who have experienced loss, then the healing naturally happens.

- Marie Sheffield,
Intercultural Peer Support Program and Training Specialist



I moved over from Vietnam when I was 2. I would always feel like my classmates think of me as an alien and that no one liked me. The Center is there for me to share those thoughts and feelings, relieving that stress.

- Jimmy Nguyen,
Intercultural Program Participant



During Covid-19, our collaboration with the Center was more than helpful. The Intercultural Program Team's willingness and persistence in contacting and connecting with our students was great. Many of those particular students were having trouble connecting with teachers and the remote learning model, and the Center's support and contact made a huge difference in a positive way. I am so grateful for their work during this period, their willingness to connect and the quality of your connection with these students AND their families.

- Jane Hubley,
LCSW, School Social Worker

Our Poem

By: The Intercultural Program Facilitators



Everything unfolds as it is meant to be.
Our hearts are full of admiration and respect.
Through the chaos, the circle remains
And the circle continues to expand.
Holding the space for all
And the circle will continue to expand outward.
Rooted, connected, unbroken, ever growing,
Including us, our communities, humanity, and the sun and stars,
We have grown together.
Our circle is a safe space.
What we do is relational, not transactional.
Love is in our hearts.

Outreach to Our Community - - - - -

Overview

Providing services and resources to both individuals and groups to help them support grieving children and teens in the places where they live, learn, and play, the Center provides community support through webinars, phone and email consults, and outreach and education to local schools, businesses, and non-profits, including providing general grief education, support, and referrals when a student, staff member, or community member has died.



I found out at 7:30 at night and was just kind of in shock, and immediately had to figure out what we were going to do the next day. We immediately called the Center for Grieving Children. When something like this happens, I think it's great to have that resource there because it helped guide us through the process.

- Dominic DePatsy,
Superintendent Saco Public Schools



How were we going to face our kids when we were so broken ourselves? How do we go on now? When the kids are here tomorrow, how do we address that and still be sad at the same time? We needed somebody to come in and say 'Ok, let's acknowledge what happened here, and then we're going to help you to take the first steps in the direction of healing.'

The support that we got from the Center helped us get to the point where we are now. We can look back and smile and remember her for all the good she brought to the building.

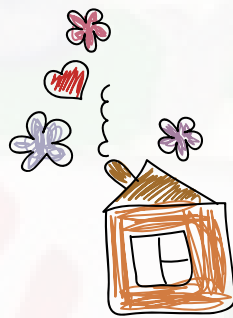
- Cristy Beaupre,
6th grade teacher, Saco Middle School



Thank You



Thank You



Overview

Providing services, training, and resources for both individuals and groups in schools, community non-profits, providers, and businesses, helping support grieving children and teens in the places where they live, learn, and play.

Outreach and Education

2059 Individuals Served

1915 Adults

144 Children

Training & Consultation

The Center provides Custom-designed training and consultation for schools, groups, agencies, and businesses who are looking to better support grieving children and adults and to understand peer support programming.

School Outreach And Support:

Biddeford High School
Cape Elizabeth High School
Freeport High School
Gorham High School
Kennebunk Elementary School
Portland Public Schools
University of New England
University of Southern Maine
Wells Junior High
York County Community College

Community Nonprofits, Providers, And Businesses:

AmeriCorps, Goodwill Industries
of Northern New England
Hospice of Southern Maine
Kittery Community Center
Long Creek Youth Development
Center
Maine Funeral Directors
MaineHealth
Maine Medical Partners,
Westbrook Pediatrics
Make A Wish Foundation - Maine
New England Cancer Specialists
Piper Shores
South Portland Library
Wentworth Douglas Hospital

Phone & Email Support

Program staff responded individually to phone and email inquiries that included questions and concerns about how to support loved ones through grief and loss; they also provided referrals to other resources and support as needed.



Quickly after my email inquiry, I was contacted by a compassionate person from the Center. They were ready to listen and ready to help.

- Jessica Welsh,
Current Sanford Bereavement Program Participant



57%
PHONE



10%
SOCIAL MEDIA



32%
WEB / EMAIL



1%
WALK-IN

Average time of phone contact 30 minutes

Resources

In this past year, thanks to side•sea and Storm Warriors, we revamped our website so visitors have a better user experience. The Center's website serves as the first step to articles, activities, book suggestions, and links to websites that provide online grief support as well as a searchable database of Maine resources. Center publications are also available online including booklets for schools and parents on supporting grieving children and teens. During Covid-19, we developed a separate section of our website to provide resources pertinent during this uncertain time for families, school administrators and children.



www.cgcmaine.org

<https://www.instagram.com/cgcmaine/>

<https://www.facebook.com/cgcmaine>

<https://www.linkedin.com/company/the-center-for-grieving-children/>

Overview

Volunteers are the heart of the Center. From serving as peer facilitators, or Board and Committee members, to helping with administrative tasks, events, or even tending to our garden, our programs would not be possible without them.



I volunteer at the Center to give children a space to approach and express their full range of emotions. When the dominant culture in America tells us to steel ourselves, tamp down our feelings, and get over it, providing an alternative narrative, building emotional capacity, and giving permission to feel is so important, especially for grieving children. Unfortunately, spaces like the Center are few and far between, which makes our work that much more imperative and purposeful.

- **Matthew Gee,**
Portland Bereavement Program Facilitator



I came to the Center in 2015, a year after my Memere died. I felt like part of me died too and that I would never be able to go on. The safe space the Center provided me not only saved my life, but got me on a path to be able to give back to those who have felt the unbearable pain of losing someone. I am grateful for my current role as a facilitator/Master of Social Work intern at the Center and I am excited to take what I've learned at the Center-- both personally and professionally-- to enhance my future social work practice!

- **Megan Arsenault,**
Sanford Bereavement and Portland Intercultural Program Facilitator/MSW intern



About a year after my mom died, my counselor asked me if there was some type of volunteer work I was interested in as this could help with my free time since her death. I immediately thought of the Center and the rest is history. I love the Center and feel like I get much more than I give. I have learned so much and love my co-facilitators and staff on Monday night. The families are amazing and I am in awe of their strength, courage, love for their family and support for each other. The Center is a magical place and I am so proud to be a part of it for the 14 years I have been.

- **Cathy Paglio,**
Tender Living Care Program Facilitator



The Heart of The Center



I always told myself that when I retired, I would do volunteer work. I never had the time when I was working. My former boss was on the Center's board, and I also knew Bill Hemmens, who founded the Center. From the first day I walked into the office, I have felt like I found another home. What a wonderful group of people. I know from answering the phone, what a difference we make in families' lives.

- Anne Foster,
Office Volunteer



Since mid-March we have been frequenting the "secret garden", as Evangeline calls it, and decided we wanted to give back since it was a nice outlet during strange times. We visit the garden on a regular basis and take note of what is in bloom! It's still our spot to go together, just the 2 of us.

- Our Woodfords Corner neighbors, Vonnett and Evangeline



Serving a year of AmeriCorps at the Center in the Intercultural Program was a great decision. I was able to grow, both professionally and personally. I learned many skills and I now feel confident to walk into a room, evaluate what is happening, and make a decision to help the situation. I made exceptional connections with the volunteers, staff, and children which resulted in creating many special memories that I will hold close to my heart. I am grateful for the opportunity to serve at the Center and to have worked alongside many people who supported and believed in me, which in turn allowed me to grow my people skills, leadership skills, and self-confidence.

- Monicah Paquette,
Intercultural Program Coordinator; AmeriCorps Volunteer



Being a facilitator for the Intercultural Program at the Center has been one of the most meaningful experiences of my life. I have so enjoyed my 3 years as a facilitator that I can't imagine not returning each school year. I cherish getting to know the kids and building relationships with them. They all have such unique personalities and life experiences, and they teach me more than I could have ever imagined! I am always telling people that I'm not sure who gets more out of it- me or the children! I am grateful for the opportunity to serve my community through the Center, and hope that every child who leaves the program each year walks away with not only great memories, but a deeper confidence in themselves.

- Emily Harradon,
Intercultural Program Facilitator



Overview

Celebrating and supporting our work. Thank you to all of our community members and Sponsors who celebrated with us this year and whose continued support makes our work possible.



Mid-Summer Night's Soiree

Vinegar Hill Music Theatre || July 10th, 2019

Thank you to all who joined us for our third annual Mid-Summer Night's Soiree at Vinegar Hill Music Theatre. It was a beautiful night of music, conversation, and community, featuring Gary Crocker, Maine Humorist, and the CIEE House band. We are so grateful to our sponsors, guests, volunteers, talent, and to the Cumberland and York community members who filled the evening with dancing and laughter!



Beach to Beacon

Fort Williams, Cape Elizabeth, Maine || August 1st, 2020

Our team of 21 "Fundracers" made the 2019 TDBank Beach to Beacon 10K a huge success for the Center. This phenomenal team consisted of current and former board members, long-time and current facilitators, families, and volunteers, along with special supporters of the Center. These incredible racers shared their stories, and represented the Center at this world-class fundraiser, helping to raise awareness and funding for the Center's vital services. Pictured here are former participants, Lynn and Becca Foley.



Swing "Fore" the Center

Purpodock Golf Course, Cape Elizabeth, Maine || September 10th, 2019

At our 17th annual Swing "Fore" the Center Golf Tournament, our golf teams enjoyed a beautiful September day in Cape Elizabeth. Many thanks to all of our sponsors, golfers, and devoted volunteers who made it such a fun and impactful day for the Center. We are so grateful for your support!

Pictured here is the Gorham Savings Bank Team, Kim Donnelly, Becky Winslow, Lisa Cormier-Smith, and Mark Girr.

Celebrating And Supporting Our Work



WCYY Markathon

WCYY Studio, Portland, Maine || December 2nd-6th, 2019

This December, we were so grateful to join Mark Curdo, former radio host at WCYY and General Manager of Aura, back in the studio again! Mark and our friends at WCYY spent a week raising funds for the Center by spinning sensational song requests, sharing on-air Center stories and interviews, holding an online auction filled with local goodies and music memorabilia, and inspiring generous donations from sponsors and the community. Thank you Mark and WCYY!



Love Really Counts Gala

Brick South on Thompson's Point, Portland, Maine || February 7th, 2020

Despite an incredibly snowy week, we were joined by 670 guests who braved the cold to gather with us at Brick South in celebration of the healing power of love and community. During this year's program, we were honored to feature the 2019 Human and Civil Rights Award given to our Intercultural Program from the Maine Education Association. We were also granted the opportunity to premiere two new, beautiful program videos created and gifted to the Center by board member Diana Nelson and Jason Nelson of Black Fly Media. These videos featured the Center's programs and families as well as our work with the Saco School district.



Virtual Pet Walk

June 27th, 2020

This summer saw the return of the Center's Pet Walk! To keep everyone safe, this year we invited participants to grab a leash and their furry best friend and choose their own route to run, walk, or jog their 5K at their own pace while social distancing in support of the Center. We were so happy to see so many families, volunteers, and community members join us in spending the day outside with their families. We couldn't have asked for a more beautiful day!

Thank You

TO ALL OUR DONORS



Having the Center here in Maine gives me an amazing sense of peace, similar to a safety net provided by a loving family. I certainly hope to never need their services for my family, but we support them because we want them there in the case that we do. It's important to us that the service exists for everyone in our state. It's an incredible asset to Maine run by incredible, loving people.

- **Alex Morse,**
CEO at side•sea and Hopsie Inc.



Having lost my father at a very young age I saw the challenges first hand that both my mother and my six siblings and I shared grieving that loss. The Center would have been an amazing place for our family, and it gives my family comfort that such an organization exists today.

- **David Banks**
Broker/Owner, David Banks Real Estate Team
Friend of the Center



Having lost my big sister when I was a teenager, I understand the profound grief children carry after the loss of a loved one. I support the Center because I know that the compassionate staff and facilitators provide a safe place for families to process their own grief and help other families do the same.

- **Amanda Rand**
President, Spinnaker Trust
Former Board President



I am proud to be a Friends of Hope monthly supporter because I want to continually invest in the good work happening in our community. It's similar to budgeting for monthly internet or phone subscriptions, except this monthly gift is supporting more than just me.

- **Katie Spatz**
Friend of the Center

ANNUAL GIVERS

2 Dine In, LLC
 Claudia Abbott
 Julie Marie Morrill Abbott
 Lynn Abood
 Abraham S. & Fannie B. Levey
 Foundation
 Eve Abreu
 Acadia Benefits, Inc.
 Tommy and Rebecca Aceto
 Mark Agnew
 Michael Akom and Julie Grosvenor,
 M.D.
 Gregory and Jeanette Allard
 AlliedCook Construction
 Donald Almy
 Sara Almy
 Todd Alpern
 Charles and Abigail Alsduff
 Amazon Smile
 Dennis and Christine Anderson
 Robert J. Anderson, Jr.
 Anonymous
 Joe Appel
 The Apple Lane Foundation
 Dawn Armandi
 Judy Armstrong
 Pamela Armstrong
 Kristeen Arntz
 Sara E. Asch
 Cynthia Atkinson, M.D.
 Attardo Ponderis Architecture
 Auburn Housing Authority
 August Wealth Management
 Gail Aure
 Adrienne Aust
 David and Melissa Aust
 Deb Austin
 Michele Austin
 Gordon L. Autry
 Patricia Axelsen
 Richard and Mary Axelsen
 Adam Ayan
 Scott and Debra Babbidge
 Charles and Brenda Bacall
 Douglas and Nancy Bagin
 Terry and Leigh Bagley
 Charles and Sandra Bagwell, M.D.'s
 Alberta Bailey
 Michelle L. Bailey
 The Baker Company, Inc.
 Robert and Kate Baldacci
 Kathryn Baldwin
 Richard and Nadine Baldwin
 The Bannon Family
 Ian Bannon
 Dianne Barbour
 Marie Barlow
 Tim and Kate Barnard
 Alisa Baroukh
 Dave Barry
 Robert and Linda Bartlett
 Winston and Carmela Barton
 Megan Bascone

Joel and Kim Bassett
 Rebecca Bassett
 Janet Bastiaanse
 Gail Beals
 Eileen Beasley
 Michael and Jeanne Beck
 Becky's Diner
 Robert and Anne Bencks
 Christopher Bender
 Benevity Community Impact Fund
 John and Holly Benoit
 Hope Benton
 Aaron Bergeron
 Mona Berliner
 Bernstein Shur
 Matthew and Breanne Berthiaume
 Richard Besitka
 Best Buy Employee Giving
 Jordan and Nicole Betts
 Doug and Robin Bibber
 Biddeford Savings Bank
 C. David and Rebecca Billings
 Esther Birkinbine
 Andrew Bisbing
 Bison-East, Inc.
 Stephen Bither and Paula
 Eisenhart
 Robert and Jill Blackwood
 Mark Blaisdell
 Kathleen Bloomer and Stacie
 Grove
 Blossom Charitable Fund
 Blue Knights Maine Chapter II
 Bob's Discount Furniture
 Charitable Foundation
 Richard and Eleanor Bochner
 Robert and Julie Boehme
 Jeb and Josie Boeschstein
 Richard Boghosian
 Jonathan Boisvert
 Robert Boland
 Angela Bolduc
 Robert Boothe
 Richard Borts and Paulette York
 Boston Red Sox Foundation
 Anne Botelho
 Joel and Jill Botler
 Bottomline Technologies
 Melinda Boucher
 Ricjason Boucher
 Boy Scouts of America-Pine Tree
 Council
 Brackett Funeral Home
 Stephen Bradley
 Bradley's 24hr Citgo
 John and Ellen Brady
 Wade and Jenny Brainerd
 Alison Bramhall
 Nicholas Breed
 David and Nancy Brenerman
 Tim and Janet Brewer
 Jim and Cyndi Brinkler
 James Britt
 Jessyca Broekman
 Marilyn Bronzi
 Timothy and Margaret Brook
 John Brooks and Jennifer

Mull-Brooks
 Richard and Kimberly Brooks
 Belamy Brophy-Baermann and
 Emma Walker
 Alan and Brenda Brown
 Peter Browne and Inga Sandvoss
 Browne
 Seth and Amy Bruning
 Juan Bruno
 Louis Bruno, D.M.D. and Marietta
 Bruno
 Robert G. Bruns
 Gilda Bryant
 Daniel and Dale Bryant
 Jenilee Bryant
 Raina Bryant
 Anne Buck
 Elizabeth Buckley
 John and Denise Budkiewicz
 Mark and Holly Bulger
 Kevin and Amanda Bunker
 Glenn and Carol Burdick
 Polly Burke
 Kristie Burns
 Rebekah Burns
 Daryl Cady
 CAF America
 Richard and Susan Calabrese
 Arline Caldwell
 Bette Callet
 George Calvert and Mary Austin
 Dowd
 Laurie Camire
 Capozza Tile & Floor Covering
 Center
 Anthony Caramando
 Linda Card
 Doug and Linda Cardente
 Patricia Carignan
 Robert and Margaret Carignan
 Kevin Carley and Ellen Grant
 David and Katharine Carlson
 Karen Carlson
 Paul and Catherine Carmichael
 Susan Carpenter
 John and Lisa Carter
 Lawrence E. Carter
 Bruce Carver
 Central Maine Power
 Carole Centre
 David and Charnette Chadwick
 Jamie Chamberlain
 Phoebe Chandler
 Mary Chaney and Nancy Ryan
 McKisson
 Charities Aid Foundation of
 America
 Charity on Top Foundation
 Joseph and Erika Charpentier
 Christopher Chase
 Church Mutual Insurance Company
 Foundation
 Cecelia L. Cierpich
 Chris and Nacole Cimino
 Peter and Gail Cinelli
 Cintas Uniforms
 Tony and Diane Cipollone

Peter Citrolo
 Patrick and Blair Clancy
 Jason Clark
 Nathan Clark and Kathryn
 Burnham
 Vaughn and Christine Clark
 Clark Insurance
 Paula Clements
 Michael and Lori Ann Clifford
 Clynk Community Cash
 Coastal Maine Kayak & Bike
 Andrew and Judith Coburn
 John and Sharon Coffin
 Amy Coha
 Sue Cohen
 Jack Cole and Sue Calhoun
 Douglas and Jane Collins
 Marjorie Collins
 Marcus and Heidi Collins
 Christopher and Miriam Collins
 Tracey Collins
 Christine Collomy
 Michael and Carol Colton
 Chris and Denise Condon
 Joseph and Dorothy Conforti
 Congdon's Donuts, Inc.
 Ida Connolly
 Joan M. Conroy
 Consolidated Communications
 Construction Systems of New
 England
 Deanna Contrino
 ConvenientMD
 Pamela Cook
 Ruth Cooper
 John and Joshua Corbin
 Brian Corcoran and Melissa Smith
 Heather Corey
 Cornerstone Financial Planning
 Madeleine Corson
 Vangel and Ericka Cotsis
 Andrew and Kim Couch
 Count & Crush
 Philip Coupe and Alexia Pappas
 Ann M. Courtney
 Nicole Couture
 Roberta Craig
 Wendy Craig
 Kevin Cratty
 Kris Wood Crimmin
 David and Patricia Critchfield
 Crooked Oak Farm, LLC
 Nancy Cullen
 Mary V. Cullinan
 David Cummings and Gretchen
 Johnson
 Paula Curcio
 Stephen and Maureen Curdo
 John and Vicki Currier
 Donald and Vicki Curry
 Richard Curry and Ellen Honan
 Thomas and Mary Cushman
 Custom Float Services
 Caroline Cyr
 Steven and Debra Daggett
 Joe Dagostin
 Cindy Daigle

Thank You

Bruce Dalbeck and Christine Bennett, M.D.
Sharon Danforth
Eduardo Daranyi
Douglas Darby
David F. Talevi Foundation
Deep Blue Truth
Frederick Demers
Michael and Andrea Descoteaux
Charles De Sieyes and Carol Ward
Kimmy and Jody Desjardins
Beth DeTine
Kathy Dietz
Josephine Diggs
Tony DiMarco
Cate DiMarzio
Peg Dineen
Walter and Gretchen Dismukes
Clement Dodd
Jerome R. Doherty
Daniel and Diane Doiron
Joe and Mary Dolce
Lisa Dominicus
Martha Donahue
Kimberly Donnelly
Peter F. Donnelly
John E. Dooley
Craig Doremus and Diana Dowd
The Dorothy Suzi Osher Foundation Trust
Carolyn M. Dorr
Don and Abigail Douglas
Joel and Jeanne Doyon
Colleen Drulard
Jacqui Drummey
Adam Dubay
Elizabeth Dubois
Michael and Denise Dubyak
Christopher and Stacey Dudley
Tzila Duenzl
Mark and Martha Dunlap
Jim Duplissie
Terrence and Margaret Dupras
Catherine Duranceau
Scott and Jayne Dyer
Eileen Edwards
Sol Edwards
Tiffany Edwards
Gloria Ehrlich
Karen Ehrlich-Jackson
Patricia Ellen
Barbara Emerson
Teresa Emerson
Emmaus Lutheran Church
Rick Epstein and Eleanor Dorr
Tabatha Erickson
John and Laurie Ernst
Katharine Estabrook
Estey Charitable Fund
Jay Evans and Martha Palmer
Jennifer Evans
Brent and Diane Everett
Evergreen Credit Union
Evergreen United Methodist Church
Facebook Payments Inc.
Katie Fagan
Lorraine Fallon
Falmouth Congregational Church

Falmouth Country Club Women's Golf Assoc.
Falmouth Lions Club
Peter H. Farnum, III and Janet Tunis
James Farr
John and Julia Fay
Brittany A. Fearon
Brian and Julie Fellows
Adrienne Fenton
James Ferguson
Marjorie Ferris
Fidelity Charitable Gift Fund
Neil and Sue Figler
David B. Findlay
First Congregational Church - Scarborough
First Congregational Church, UCC
Jane E. Firth
Sheldon and Lee Fishman
Lori Fitzmaurice
Stuart and Eleanor Flavin
Fleet Feet Maine Running
Keith and Anne Fleming
Michael Flexner
Brian and Gervaise Flynn
Kathleen Flynn
Joseph Foley and Trish O'Carroll
Lawrence and Shelagh Foley
Folly 101
Norman Forgey
Michael Foshay
Daniel and Karen Foster
William and Kim Foucher
April Fournier
Fox Property Maintenance, Inc.
Terry Fralich and Rebecca Wing
Robert Frank
Sam and Norma Jean Fratoni
Nicky Frautten
Jim and Marion Frederick
Maxwell J. Freeman
The Front Porch Restaurant
Front Stream
Frontstream Credit
Diane Frost
Vince E. Furey, Jr.
Julie Gagnon
Jimmy A. Galvez
Kurt C. Garascia
Michael and Gail Garcia
Catherine Gargolinski
Jeff Gauthier
Chip Gavin and Andrea Krasker
Gavin
Marty and May Gavin
GEI Consultants, Inc.
General Dynamics
David and Claire Genest
George L. & Clara S. Shinn Foundation
Gerber Associates, P.A.
Bill and Betsy Gianetta
David and Karen Giansiracusa
Hannah Giger
Grace Giles
Beth Gilford
David Gilligan
Jason and Bethany Gilpatrick

Gipson Family Foundation
Danielle Gismondi
Frederick Gleeson
Glenn W. Gleeson Insurance
Larry and Nancy Glidden
Michelle Godbout-Clock
Jon and Nancy Goldberg
Barry Goldstein
Mark and Betsy Goldstein
Joseph Goodman
Gorham Savings Bank
Alison Gorman
Jeff and Sonya Gorman
The Estate of Norman A. Gosline
Annette Gosnell
Mallory Gould
Dann Gowell
Ward and Kristin Graffam
Susan Graham
Granite Payments
Alice Grant
Shelley Grant
Sheryl Graves
Greater Horizons
Douglas Green
Cynthia Greene
William Gribbin and Lisa Wilson
Patrick Griffin
Kurt and Kim Grindatti
Lee Griswold
Marty and Amy Grohman
Patrick and Linda Grotton
Maxwell Martin Guerin
Zeki Gurcan
Daryl Hahn
Elizabeth Hahn
Lia Haley
Haley's Metal Shop, Inc.
Rick and Correen Hall
Joseph Hallen
Robert Hamblen
Larry Hamilton
Richard and Anna Hamilton
Robert S. Hamlyn
Morris Hancock and Linda Peyton
Hancock
Lisa Ha-Ngoc
Heather Hansen
Joseph Hanslip
Matt Hanson
John Harcourt and Sue Ellen Stavrand
Ben and Kimberly Harding
Nicole Hardy
Scott Hardy
Charlotte Harrison
David and Lisa Harrison
Stephen Hart
Harvey Family Charitable Foundation
Margaret Harvey
Wendy Harvey
Charlie and Debbie Hascall
David and Karen Haskell
Heather Hatt
Philip and Susan Hawes
Donna Hazard
Mark Hazell and Catherine Lamson
Pete Hazzard

The Heat Doctor
Sean and Stacey Heavin
Rebecka Hekmat
Stephen and Kimberly Hendry
Deborah Henry and Edith Aronson
Anne Heros
Carol Herzog
Bartlett and Kristina Hewey
Linwood Higgins and Elinor Gibbs
Robert and Cecelia Hill
Rodney and Heather Hill
Margaret Hillman
Janice Hilton
Ann Marie Hinker
Robert Hoag
Ronald and Stacy Hodge
Lyle Hodgson
Lawrence and Patricia Hogan
John and Mary Holland
Vicki Hopewell
Tom Hopkins
Horace and Barbara Horton
Elizabeth Horton
Adam Hosack
Sharan Hovey
Lisa Howell
Marcia Howell
Dorothy C. Hoy
Robert P. Hoyt
Derek Huff
Samuel and Joan Hull
Kevin Hunt and Elizabeth Mitchell Hunt
Joseph Hurley
Stephen and Cynthia Hutchins
Walker and Ann Hutchins
Jacqueline Huynh
Joe and Maria Hyatt
IBM Employee Services Center
Michael Iceland and Jessica Lovitz
Steven and Cindy Imm
Increase Miller Elementary
Naoto and Susan Inoue
Intermed Pediatrics
Glenn Irish and Jane Madden Irish
Helen Isenman
Susan Isenman
Kasie Jean
Valerie J. Jennings
Kevin Jensen and Janna Rearick
Alan Joch and Anne Freed
Erik and Jen Johansson
Jeff Johnson
Deidre L. Johnston
David and Ann Jones
Teresa M. Jones
Dianna Jordan and Amanda Coulombe
Stephenie Jordan
Catherine Jorgensen
Kathleen Joyal
Donna Jung
Bill and Maria Junker
JustGive
Bill and Holly Kany
Douglas and Ann Kaplan
Marc Kaplan
Ed Katz
Edward and Blanche Katz

Karen Kauffman
Robert Keach
Mary Keegan
Thomas and Anne-Mari Kelly
Kennebunk Beach Realty, Inc.
Kennebunk Free Library
Kennebunk Savings Bank
Robert and Ann Kennedy
Matthew and Carmensol
Kesselhaut
James and Nancy Key
KeyBank Foundation
Cynthia Kindschi
Catherine King
Haul King
Michael Kinsman
Rosemary Kane Kirby
Christopher and Anne Kittle
Adam Knight
Mary Knott
Mary Elizabeth Knox
Andrew and Tara Knupp
Vivian Korner
Brenda Kostyk
Michael and Elizabeth Kramer
Helen Kropitis
David and Karen Krug
Jared Kulaga
Ken Kunin and Beth Stickney
Kyocera Document Solutions of
Maine, LLC
John and Jane Labbe
Barbara Lacoss
Jennifer Shelley Lacroix
Patrick and Audrey Ladd
Carla Lafortune
William and Mary Lahner
Ann LaLiberte
Erin Lamontagne
Michael and Carolyn Lane
Jana Lapoint
Keir Larock and Karen Sherlock
F. Philip Laughlin, Jr. and Christine
Laughlin
Richard and Jackie Leach
LeBlanc & Young
Cheryl A. Lee
Gary and Diane Leech
Kim Lefebvre
Legaspi Family
William and Gail Legge
Amie Lemire
Roger and Linda Lemire
Leonardo's Pizza
Paul and Janet Letalien
Susan Leverage
Jared Levin
Howard and Karen Levine
Robert LeVine
Brian and Jill Levitt
John R. Lewis
Theodore and Linda Leyme
Jen Libby
Liberty Mutual Insurance
Libra Foundation
Cameron Linen
Christine Linnehan
Lions Club of Cape Elizabeth, Inc.
Wade and Heather Lippert

Steve and Jan Litchfield
Christopher Littlefield
Martha Littlefield
Howard and Jacinthe Littlefield
Brian and Sandra Livingston
John and Susan LoBosco
Joe and Carole Long
Margaret Lonsdale
John Lopriore
Don and Rita Marie Lore
Losam Fund
Timothy and Karen Lucy
Carol Lydon
Chris and Ann Lynch
Thomas Mackenzie
Linda MacPherson
Veronica Madden
Stephen Majercik and Faith Barnes
Maine Eye Center
MaineHealth
Eden Maisel
Make a Wish Foundation of Maine
Matt Makinen
John and Tammy Makowiecki
Robert and Eileen Malay
William and Sandra Maners
James Mangini
Anthony Manhart
Michael Mann
Christa L. Manning
Christina Manning, M.D.
Norma J. Marchant
Thomas Marczak
Joe Margolis
Christopher Marine
John and Jeanne Markin
Erika Marquis
Martin's Point Health Care, Inc.
Gay Massicotte
Pauline Maxham
David and Raina Maxwell
Roseann Mazjanis
John A. McArdle, III and Meredith
Fisher McArdle
Michelle L. McCarter
Deborah McCarthy
Philip McCormack
Misty McFarland
Bruce and Kim McGahey
Vanessa McGee
Francis and Susan McGinty
Scot and Janet McGorty
Alison McGrath
Alan McIlhenny, Jr. and Beth
Ackerson
Brian and Sally McInnis
Joseph McKeon, Jr.
Mary Ann McLean
Gayl F. McNally
Patrick J. McNally
Patti McNamara
Corey McNutt and Anna Podnecky
Eugene and Lorraine McSweeney
Tiffany H. Mears
Medtronic, Inc.
Edward and Nancy Meehan
Julie Melia
Melvin S. Cutler Charitable
Foundation

Foundation
MEMIC
Ian Mercer
Owyn Merrick
Mark W. Segar and Susan Metters
Connor and Amanda Mielke
Cynthia Miers
Thomas Mikulka and Melissa Boell
The Miley Foundation
Aaron Miller
Lawrence and Karan Miller
Brian and Patsy Milliken
The Mimi Foundation
Joseph and Carol Mironov
Mirriam and Christopher Roberts
Fund
Jesse Mitchell
Ronald Mitchell
Dana and Janice Mitiguy
Rick and Debby Molander
Duncan and Mary-Lou Molloy
Annika Moltz
Jessie Moon
Bruce Moore and Janice Chapman
Elena Moret
Morgan Stanley
Brian Morin
Jerry and Lisa Morin
Linda Morin
Wayne and Caroline Morong
Jennie E. Morrill
Ali Morrison
Alex and Dunia Morse
Morse Hill Trust
Paul Morton
Peg Schibig Moultime
Eric Mukai and Laurie Small
Petrina Muller
Jacqueline Murgida
Elizabeth Murphy
Jan Murphy
Joshua and Marci Murphy
Kenneth J. Murphy
Rev. Susan Murphy
Caron Murray
Monique M. Murray
Victor J. Murray
Paul and Sarah Muscat
John and Wendy Muse
The Musicman DJ Services, LLC
John G. Nahil
David and Nicole Nalchajian
Nappi Distributors
Branden Neal
Ross Nehrt and Leigh Bullion
Sadhbh Neilan and Wendy Graham
Stephen Neill and Theresa Kelly
Network for Good
Ralph and Susan Neumyer
New England Cancer Specialists
New York Life Insurance
Cory Nicholson and Heather
Henley
William and Linda Nickerson
Robert and Susan Nielsen
Andy and Stacey Nightingale
Lisa A. Noonan
Joel and Joan Nordberg
NorDx Maine Health

Jeffrey Norris and Laura Newman
Northeast Credit Union
Northeast Delta Dental
Northern Light Mercy Hospital
Ryan and Kate Norton
Norway Savings Bank
Jack and Margaret O'Brien
Patty O'Brien
Paul and Frances O'Brien
Michael and Heidi O'Connor
Thomas and Elizabeth O'Connor
John and Mary Jo O'Day
Ben Odum
Ogunquit Farm RV Park
Ogunquit Rotary
Shawna Ohm
Old Orchard Beach Funeral Home
Irene and Jeffrey Oldfield
On Target Utility Services
One4All Charitable Fund
Timothy O'Neil
Caitlin O'Reilly
Anthony and Kathryn Ornatek
Ellie Osborn
Alonzo Osgood
Harry and Beatrice Osgood
Frank and Mary Lynn O'Shea
Harold and Peggy Osher
David and Debra Osswald
Eric Osswald
Maria Otero
Jeannie Owens
Elizabeth Page
Kerrin Page
Jason Palmer
Francis and Constance Palys
Edward Pappas
Esther Pappas
Nicholas and Nicoletta Pappas
Brian and Heather Paquette
Brian and Suzanne Paquette
Timothy and Wendy Paradis
Nelson and Toni Parise
David Parker
Emily Parr
Sandi and Sener Pasalic
Rachel Pasquale
Kiran and Lynne Patel
Patrons Oxford Insurance
Company
Shawn Patten
Mark and Suzanne Patterson
Elizabeth Pauls
Keith and Donna Payne
Sheila Peabody
David and Leyla Pearce
Michael Pearce
Matthew and Abigail Pearson
Justin Pease
Philip J. Pedro
Priscilla Pelletier
David Pence and Moira Driscoll
Jeannine Pendergast
PeoplesChoice Credit Union
Matthew Perkins
John and Lindsay Perry
Brian Peterson
Erik Peterson
Julie A. Peterson

Thank You

Kent Peterson
Noah Petrucci and Diane Simon
Mark A. Pettingill
Carl and Betty Pforzheimer
Mark Philbrick
Winthrop Phillips and Elizabeth Orlic
Phillips-Green Foundation
Margaret Pickering
Jeffrey and Carole Pierce
Kenneth and Kathleen Pierce
Pierce Atwood
Pierce Promotions & Event Management, Inc.
Daniel and Nancy Pinciak
Pine State Elevator Company
Pine State Trading Company
Craig Piper and Lynne Holler
Louis Pirone
Krystal Plantz
Plastic and Hand Surgical Associates
Robert Platt and Christina Ramirez-Platt
Mary E. Plouffe, Ph.D.
Charles and Linda Plourde
PM Construction
Charlie and Liz Poole
Dot Pooler
Ruth Pooler
Kerry Porter
Portland Regional Chamber
Portland Symphony Orchestra
Portland Water District
Portside Foundation
Craig and Nancy Posey
Robert and Diane Post
Brian Potter and Sonja Solberg
Matthew and Susan Powell
Rindy Price
Pro Search, Inc.
Mark and Christine Proctor
Tim and Kathie Propp
Elizabeth K. Provost
Jim and Michelle Przybylowicz
Theresa Puckett
Demetra Pulos
John and Jennifer Pulvino
Amanda Purington
Roland and Anna Quinlan
Edward and Sandra Quinn
R. M. Davis, Inc.
Michelle Raber
Patricia Rabadoux
Robert Raff and Mary DeLois
Glen and Susan Rainsley
Peter and Amy Ramundo
Mark and Amanda Rand
Rangeley Congregational Church
Norman and Lenore Rapkin
Rapkin-Stiles Family Charitable Fund
Jason and Angela Raven
Robert and Elizabeth Ravenelle
Daniel and Nancy Ravin
Alison Ravis
David Ray and Kay Loftus-Ray
Heather L. Ray
James and Katharine Raybin

RE/MAX Shoreline
Frank and Carmela Real
Daniel Reardon and Bernadette Woodcock
Ralph Record
Scott and Shari Redan
Jason Reitman
Lan Remme
Marcelina Reyes
Patricia B. Rice
Peter Rice and Margaret Davis
Laurel Richards
Tracy Richardson
Donald and Nikki Richio
Rocco Risbara, III and Mary Jane Risbara
Brian and Cathy Roberts
David and Kristin Robinson
Gary and Cathy Robinson
Michael Robinson and Regina Nappi
Dennis Rogers and Susan Gray
Janice Rogers
Jared Rohrdanz
Clayton and Louise Rollins
Thomas and Frances Roosevelt
Virginia Pratt Root
Charles and Glee Ross
Kevin Roughton
Ann Marie Rousselle
David and Terry Rowden
Royal River Natural Foods
Bill Ruppert
Alan Russell
Rx Abuse Leadership Initiative
Edward and Connie Ryan
Melanie Sachs
Saco Bay Rotary Club
Saco & Biddeford Savings Institution
Saco Valley LLC
Jeffrey and Susie Saffer
St. Peter's Church
Bruce St. Thomas and Peggy Fallon-St. Thomas
Salesforce
Andrew Salmon
Elaine Salomon
Gerard and Colleen Salvo
Kim Salzmann
Susan Samberg
Brenda Sanborn
Susan Santangelo
Judy Savage
Scarborough Surgery Center
Philip Scavotto and Cecilia Caldwell
Steven Schacter
Ziggy Schaffer
Schiavi Family Foundation
Andee Schmeerer
Jeri Schroeder
Schwab Charitable
Juliet Schweier
James and Lorraine Schwellenbach
Curtis and Cornelia Scribner
Theresa Seekamp
Vernon Sequin
Sellers Publishing, Inc.

Karen E. Sesto
Michele Shems
Sorca Sherman
Tom and Alison Sherman
William Shumaker
Sue Shumda
Sherrill Sidlik
Kimberly Simard
Henry and Jessica Simpson
Mackenzie Simpson
Douglas and Barbara Sinclair
Bill Singer and Sarah Belisle
Daniel and Ashley Sites
Simon Sjostedt
Mary Skehan
William and Michaela Skelton
Emily Slunt
Smaha Family Charitable Fund
Aaron Smith
Kenneth Smith and Heidi Foreman-Smith
Kenneth and Sally Smith
Kevin and Kathy Smith
Marianne Smith
Patricia Smith
Smith Family Charitable Trust
Kevan Snyder
Soakology
Sue Solano
Ryan Soucie
Andrew and Pamela Soucy
South Freeport Congregational Church
Southern Maine Health Care
Isaac Sparks
Ryan Spaulding
Cynthia-Ann Spear
Spectrum Health Systems
Jay Spenciner
Anne Spiegel
Michael Spiller
Spinnaker Trust
Kenneth Spirer and Joan Leitzer
Katie Spotz
Spurling Training Systems, LLC
The Standard Insurance Company
Kevin Stanhope
Donna Staples
Kathryn Staples
Starbucks - Corporate Office
Victoria Starr
Carl and Barbara Stasio
State Farm Companies Foundation
Steven and Anne Staton
Douglas Stebbins
Tim and Karen Stebbins
Allison Stevens
Christopher and Terri Stevens
Drew and Robin Stevens
Eric and Heather Stevens
Andrew and Ann Stickney
Christian and Tina Stickney
Timothy and Sarah Stickney
Will Stiles and Hilary Rapkin
Marie Stirling
Allie Stockwell
Stoddard Charitable Trust
Maryliz Stone and Pamela Erickson
Patricia Stone

Sandra Stone
Strategic Media
Paul Stratis
Jennifer Sullivan
Timothy and Lorraine Sullivan
Amanda Surace
Eric and Beth Ann Swan
Erica Swan
Nina Swan
Al and Barbara Swenson
Meg Swift
Systems Engineering
Tandem Coffee & Bakery
Mike Tanguay
Dori-Anne Tarr
Ivan Tate
James and Elizabeth Taylor
Kenneth Taylor
Russ and Allison Taylor
William Taylor and Nancy Thompson
TD Bank
TD Beach to Beacon 10K, Inc.
TD Employee Charity Choice Account
Ralph and Marilyn Tedesco
Dawn and Kelly Tenny
Ten and Carol Terison
Duston and Alison Tetrault
Texas Instruments Foundation
Texas Instruments, Inc.
Paul Thelin
Ben Theriault
Melvin Thomas
Donna B. Thompson
Karen Thompson
Pamela Thompson
Tim and Nancy Thompson
William Thompson
Diane Thornton-Chandler
Ron Thurlow
Cris Tierney
Kevin Tierney
Time and Again LTD.
David Tompkins
Henry Tosi, Jr.
Paul and Colleen Toth
Town & Country FCU
Gladys Trainor
Sandra Traver
Jules Trembly and Karen Turner
Triangle Lodge No. 1
Trinity Episcopal Church of Portland
Trinity Lutheran Church
Triton Foundation
TruChoice Federal Credit Union
Jeffrey and Kim True
Truist
Kevin Trytek
Ed Tumavicus and Megan Tumavicus, M.D.'s
Karl Turner and Susannah Swihart
UNE - College of Graduate & Professional Studies
United Baptist Church
United Way of Central Ohio
United Way of Greater Portland
United Way of York County

Donors

Unity Lodge #3
Leslie Unterweiser
Unum Matching Gifts Program
Jose and Joan Uranga
Teresa Valliere
Mitchell and Kendra Vance
Beth Van Gorden, L.C.S.W.
David Van Slyke and Susan Granai
Erica Vargo
Samip Vasaiwala, M.D. and Shikha Vasaiwala
Don and Anne Vermeil
Raymond Veroneau, Jr.
Verrill Foundation
The VIA Agency
Village Green, LLP
Marina Villeneuve
Vinegar Hill, LLC
Jeffrey Viola and Julie Landry Viola
Vitalius Real Estate Group
Douglas and Gail Volk
Kenneth and Diane Volk
John Wahlig, M.D. and Jennifer Wahlig
Joseph and Mary Ellen Walek
John H. Walkenford
Donna M. Walker
Joseph and Elizabeth Walker
Krissia Walker
Daniel E. Wallis
Pauline Wallis
David Warren
Bradford and Elizabeth Watson
Rev. Jacob Watson, D.Min. and Kristine Watson
Douglas and Alison Watts
Joseph and Jerry Wax
Wayfair
Jason Webb
Marcy Webber
Cam and Jack Weir
Wells Junior High School
Wells-Ogunquit Community School District
Wentworth School
Hilary West
Westbrook Eagles Auxiliary # 2977
Edward and Lorraine Whelan
Jeff and Nancy White
John and Diane White
Maureen White
Lee Ann Wilcox
Jonathan and Lisa Wilk
Heidi Wilkes
The William J.J. Gordon Family Foundation
Nathan Wilson and Patricia Gallagher
Paul and Lisa Winch
George and Diana Wing
Mark A. Winship
Karen True Winslow
Warren and Barbara Winslow
Dean and Kristen Wintle
Daniel and Lisa Wohl
Adin Wolfram
Joshua Wolfram
Margo Wood

Peter and Mary Wood
Scott and Laurie Wood
The Woods At Canco
Nell Woodworth
Robert Yamartino and Maxine Sclar
Jack and Darnell Yao
Yarmouth Lions Club
Susie Youd
Jonathan and Susan Young
Li Ling Young
YourCause, LLC
Inna Yurkevich
Barry and Janet Zimmerman
Clayton Zucker

BILL HEMMENS SOCIETY

Robert J. Anderson, Jr.
Christine Bennett, M.D.
Gail Cinelli
Bruce Dalbeck
Fred Demers
Denise Dubyak
Michael Dubyak
Peggy Fallon-St. Thomas
Ben Foley
Lynn Foley
Rebecca Foley
Julie Grosvenor, M.D.
Stephen Hart
Anne Heros
Linda S. Kelly
Mary Larkin
William Legge
Jennifer Mull-Brooks
D. Suzi Osher
Hilary Rapkin
Cathy Robinson
Gary Robinson
Bruce St. Thomas
Kimberly Simard
Melissa Smith
Will Stiles
Ed Tumavicus, M.D.
Beth Van Gorden
Cynthia Veroneau
Patrick Veroneau
Rev. Jacob Watson
Kristine Watson

IN HONOR

All those who are grieving
Sara Asch
David Aust
David Banks
Cari Bierbaum
Henry Bliss, III
Tiffany Bond's #MaineRaising Campaign
Rob and Emily Caldwell
Gemma Cannon
Center Staff
Tracey Collins
Heather Corey
Nicole Couture
Mark Curdo
Dominique Del Valle

Dega Dhalac
Steve and Lisa DiGiovanni
Michael and Denise Dubyak
Beth Elicker
Patricia Ellen
Betsy Ellman
Falmouth High School Class of 2020
David and Cathie Flavin
Alan, Jock and Anne Freed
Bill and Betsy Gianetta
Brian and Mary Gilpatrick
Pamela Glidden
Lelah Goken
Timothy P. Griffin
Charlie and Deirdre Hamblen
Emily Harradon
Stephen Hart
Charles and Debbie Hascall
Noah Hembrough
Deb Henry
Anne Heros
Sally Hirshberg
Heidi Howard and Doug Green
Lu Hutchins
Juiles
Linda Kelly
Mark and Lyndell Lavigne
Leo Ledman
Janet Letalien
Christine Linnehan
Sean Maloney
Owyn Merrick
Lisa Morin
Cory Nicholson
Paul and Fran O'Brien
Frances O'Brien
Kayla O'Rourke
Emily Osswald
Judy Padovano
Jenn and Aubrey Patterson
Christine Peura
Robert Plourde
Steve Putnam
Nancy Reilly-Wohl
Ollie True Roberge
Dorothy Schmearder
Jillian Schmelzer
Barney Skolnik
Tori Stevens
Christian and Blaze Stickney
Patricia Stone
Paul Stratis
Liam Trafton
Ed Tumavicus, M.D.
John Vanass
Rev. Jacob Watson, D.Min. and Kristine Watson
Pam Wolfram
The Wright Family
Janice Zurlo

IN MEMORY

Elaine Abramowitz
Rebecca L. Aceto
Anne Akeley
Marie Almy
Molly Anderson

Joseph and Claudia Arnold
Tom Axelsen
Danny Baird
Rich Baldwin
Valerie Baron
Allison Beal
Lindsay Berghuis
Kim Bickford
Ken Black
Edwine Blow
Joshua James Blow
Kathy Bojarczuk
Hope Bolster
Dom Bongiovanni
PJ Boyle
Christopher Bramblett
Grace Brescia
David Brodsky
Waylon and Sadie Brown
Daniel Cammerman, M.D.
Joseph Carignan
Amanda Lin Carr
Grant Chandler
Emilie Cherry
Gregory Collins, M.D.
Susan K. Condon
Peter Connolly
Pamela Conroy
Mary E. Corbin
Katherine Cousins
Cousin Eric
Robbie and Katie Craig
Dean and Derek Cressey
Sloan Critchfield
Danny Ray Cummings
Bob Cushman
Fran D'Agostin
Rachael Dalton
Joshua Lee Danforth
Timothy Dietz
Kieli Dixon
Elizabeth Donahue
Fred and Marilyn Durst
Milton Emerson
Hal Engelter
Marjorie Estabrook
Every parent lost to COVID-19
Jack Flanagan
Donald Folkers
Anne Foster
Florence Freeman
Lois Funderbunk
Peggy and Stephanie Furey
Martha Giles
Michael Gilligan
Dianne Gleeson
Laurel Elderkin Graham
William J. Hannigan, III
Ann Heath
Bill and Mary Hemmens
Bill Hemmens
Dan and Ann Henry
Richard Herzog
Amy Hewitt
Amy Hill
Drew Hill
Rita Hirsch
Angelina Holland
Christine Holland

Thank You

Jessica Anne Homan
Eckart Horn
Glenn Howarth
Nancy Record Howell
Tracy Howell
Griffin Iceland
Howard Jackson
Roberta Jaro
Jewles
Sarah Johnson
Peggy L. Keach
Richard Kelly
Sokha Khuon
Robert Kirby
Bernard C. Knox, Sr.
Connie Korda
Daniel I. Kornetsky
Paul and Anita LaBonte
Amanda Lamb
Mike and Ann Lamb
Gerald and Rosella Landers
Bruce Lerch
Daniel Linnehan
Caoimhe Lynch
Tess MacDonald
Ian MacKechnie
Ramona Mahar
Barbara McCafferty
Angus McDuffie
Michael McKenna
Allan C. McLean
Connie McLean
Margaret McNulty Manley
Rachel Metivier
Jeff Miller
Melanie Molloy
Antonio and Maria Morelli
Major Robert J. Morrison
Peter Mott
Stephanie Mull
Pal and Doo Mullee
Stephanie Couturier Munro
Glynn Nicholson
Karen Niehoff
Eli Norbert
Joe Novak
Frankie Odom
Cynthia O'Neil
Shalene Osgood
Philippe and Lorraine Paquet
Francois and Lorraine Parise
Michael Pearce
David Pearson
Melissa Pettingill
Ruth M. Pierson
Sandra Plouffe and Martha Quinde
Faith Elaine Poulin Bailey
Aaron P. Pratt, M.D.
David Provost
Devin Remme
Gertrude Roberts
The Robinson-Willett Family
Sylvia Joy Lynn Rodson
Drew Paul Ross
Sandra Ross
David Rowden, M.D.
Sarah Sadler
Jeremy (Amanda) Sandler
Kim Shattuck

Mike Sherlock
Norm Sherman
Alexandria Sidlik
Katie Simpson
Julianna Sirois
Samantha Smith
Zachary F. Smith
Joan Solari
Cindy Sterling
Pete Stickney
Tim Stickney
Arick Tarr
Mark Thibeault
Dan Thibodeau
Terry Thompson
Laura Toth
Dana Vamvakias
Dr. Chandrakant Vasaiwala
Noella Vire
Scott Weiland
Elsje Welch
Katie Welling
Don Wells
Corinna Marie Wentworth
The Weyland Family
Wolfgang Muller
James and Marlene Zurlo

IN-KIND SUPPORT

Artist & Craftsman Supply
Marie Ann Bell
Jennifer Bosch
BowWow Barkery
Linda Burke
Linda Burns
Central Maine Power
Comfort Systems, USA
Mark Curdo
Bruce Dalbeck and Christine Bennett, M.D.
Delta Kappa Gamma
Direct Travel
Ashley Doyle
Jeremy Dyer
Great Falls Elementary School
Hannaford Bros Product Recovery Ctr.
Headlight Audio Visual
Stephen Hart
Dawn LaChapelle
Alex Leech
Christie Mahaffey
Maine Interior Design Association
Maine Red Claws
Maple Grove Grange #148
Pamela McGrath
Norris, Inc.
Paul and Frances O'Brien
Linda Parise
Portland Stage Company
Amy Prescott
Professional Disability Associates, LLC
Project Linus
Real Deal 5k
Amy Robertson
Marguerite Rubino

Saco & Biddeford Savings Institution
Caroline Salamone
Seabreeze Property Services Inc.
Scoop Deck
Sodality of St. Anne
South Portland Public Library
Colleen Stokes-Lilley
TD Bank
Toy Association
Eric and Wendy Tracy
Walgreens
Wellcome Manor Family Services
Robert M. Williams

FOUNDATIONS

The Agnes M. Lindsay Trust
Allagash Brewing Company, Inc.
Bank of America Charitable Foundation
Coulombe Family Foundation
Eunice Frye Home Foundation
Hospice Fund of the Maine Community Foundation
John T. Gorman Foundation
Lincoln and Therese Filene Foundation
Maine Community Foundation
Maine Health Access Foundation
Margaret E. Burnham Charitable Trust
Narragansett Number One Foundation
Roy A. Hunt Foundation
Sadie and Harry Davis Foundation
TJX Foundation
Tom's of Maine
United Way of Androscoggin County
United Way of Central and Northeastern Connecticut
United Way of Eastern Maine
United Way of Greater Portland
United Way of Kennebec Valley
United Way of Massachusetts Bay & Merrimack Valley
United Way of Mid Coast ME, Inc.
United Way of the Southern Tier
United Way Suncoast
United Way of York County
Welch Charitable Fund of the MCF

CORPORATE PARTNERS

Harvard Pilgrim Healthcare
IDEXX Laboratories, Inc.
Jim Godbout Plumbing & Heating
Martin's Point Health Care
Portland Harbor Hotel
Strategic Media
WEX Inc.

AUCTION SPONSORS

Love Gala Sponsors
IDEXX Laboratories, Inc.

Joy Sponsor:

WEX

Hope Sponsor:

Tex-Tech Industries, Inc.

Resilience Sponsors:

David Banks Real Estate
Patrons Oxford Insurance Company

Saco & Biddeford Savings Institution

Compassion Sponsors:

Bernstein Shur
Gorham Savings Bank
Jim Godbout Plumbing & Heating
New England Cancer Specialists

Peer Support Sponsors:

MaineHealth
Marcum LLP

Community Circle Sponsors:

Anthem Blue Cross/Blue Shield
Baker Newman Noyes
Baldacci Consulting Group
Bigelow Investment Advisors
Boulos Asset Management
Brush & Hammer Builders
Capozza Tile & Floor Covering Center
Children's Museum & Theatre
C.M. Cimino Realty Inc.
Cross Insurance
Disability RMS
Diversified Communications
Harvard Pilgrim Health Care
HM Payson
HP Hood LLC
Intermed
Jones, Rich, & Barnes
KMA Human Resources Consulting
Martin's Point Health Care
MEMIC
NEWS CENTER Maine
Old Port Advisors
Shutterbugs 4 Charity
Smith & Wilkinson
Spinnaker Trust
TD Bank
Town & Shore Real Estate
Two Lights Settlement Services
UNUM
Verrill
Mike Wilson

Friend Sponsors:

Clark Insurance
Hannaford Supermarkets
LL Bean
Mascoma Bank
Pension Professionals
Professional Disability Associates

Media:

Maine Magazine

In-Kind:

Blue Elephant Events and Catering
CIEE House Band
Headlight Audio Visual
National Distributors, Inc.

Transformit

Trazon

Unified Parking Partners

Live Auction Donors:

The Aloft
Amtrak Downeaster
Anonymous
Back Bay Grill
Robert and Kate Baldacci
Bibber Memorial Chapel and the
Bibber Family
Big Tree Hospitality
Jenilee Bryant
Bill Burbine
Joe and Becky Delois
The Ellen DeGeneres Show
Evo Kitchen and Bar
Fitz & Bennett
The Francis
Fred C. Church Insurance
Hampton Inn
Hilton Garden Inn
Inn By The Sea
Isa Bistro
Thomas and Anne-Mari Kelly
Kennebunkport Resort Collection
Mary Larkin
Chris Lawrence of Maine
Photography
Miyake
Mountain Air Country Club
North 43 Bistro
Pilot House
Portland Harbor Hotel
Kylie Raymond
Scales
Shutterbugs 4 Charity
Sur Lie
Three Rivers Whitewater
Samip Vasaiwala, M.D. and Shikha
Vasaiwala
Daniel and Kathleen Ventura
Veroneau Insurance
Westin Portland Harborview
Winspire
Rich and Kristen Woodman
Yachtsman Hotel & Marina Club

SPONSOR A CHILD

Richard Abramson
Eben and Stephanie Albert
Ashley Allen
Dean and Marilyn Alofs
Anthony and Kristine Amato
Wendy Anders
Paul Attardo
Richard Baker and Katherine
Rutherford
Robert and Kate Baldacci
Rob and Sydney Barrett
Kristen Bell
John Bennett and Abigail Snyder
Peter Beyeler
Nish Bhatnagar
Jonathan and Gabrielle Bird
Rachael Blake
Will and Susan Blanche
Mark and Christina Bouchard
Bill Bourassa
Sandy Bowie
Belamy Brophy-Baermann and
Emma Walker

Bryan and Michelle
Brophy-Baermann
Molly Brown
Jeff and Jennifer Bush
Julie Butcher Pezzino
Steven and Gina Caminiti
Anthony Caramando
Joe and Pam Cardin
Robert and Margaret Carignan
Dustin and Sarah Carson
Brenda Cerino
Kevin and Allison Chase
Bryan and Kim Christoforo
Anthony and Amber Cimino
Chris and Nacole Cimino
Peter and Gail Cinelli
Jennifer Clark
John Colianni and Jean Burr
Virgile and Wynter Courmont
Greg and Kristan Cox
Martha Crawford
David Cummings and Gretchen
Johnson
Benjamin Dailey and Amy
Cullen-Dailey
Bruce Dalbeck and Christine
Bennett, M.D.
Steve and Kristen DeCastro
Mike and Sarah Del Tergo
Frederick Demers
Brent and Christine Demichael
Pete and Cathie DeWitt
Anthony and Amber Diphilipo
Ericka Dodge
Kimberly Donnelly
Karyn Dowty
Eric and Trisha Doyon
Jonathan Dunitz
Greg and Laura Elder
Mark and Jennifer Flavin
David and Carolyn Floryan
Lynn Foley
Mary Fowler
Lani Geistwalker
Hilary Gilmour Robbins
Pierre and Cynthia Giroux
Mark Girr
Bernard and Marianne Gorden
Rachel Gormley
Steve and Sheena Gorsun
Ryan and Tia Green
Katie Grenier
Chris and Patty Grennon
Heather Hamilton
Lily Hanstein
Stephanie Harmon
Jennifer Harnish
Syd Harrison
Stephen Hart
Whitney Harvey
Charlie and Debbie Hascall
Robert and Elizabeth Hebert
Rick and Mary Heikkinen
Matt Thornton and Quincy Hentzel
Anne Heros
Peter Herzog and Julia Bloom
Herzog
John and Sophie Hill
Troy and Stacy Holston

Scott Janco and Lindsey Theriault
Janco
David and Ann Jones
Michael and Carly Joyce
Arthemon Kabwigiri and Claudette
Ndayininahaze
Bill and Holly Kany
Maddie Kearns
Bob and Tracy Keegan
Thomas and Anne-Mari Kelly
Leif and Lindsey Kerkela
Dean and Beckie Kier
George and Darlene Koukos
David and Karen Krug
Celine Kuhn
Joseph and Michelle Kuklewicz
Michael LaCourse
Shannon and Holly Lancaster
Gail Landry
Michael and Carolyn Lane
Mary Larkin
Jackie and Richard Leach
Eric and Lindsey Lessard
Paul and Janet Letalien
Nate and Anna Levesque
Sara Lewis and Jen Goldman
Anne L'Heureux
Christine Linnehan
Chris and Ann Lynch
Eoin and Louise Lynch
George and Heather MacKinnon
Josh and Ashley MacLearn
Adrienne Madden
Martin and Katie Madden
Rolf Madsen
Ryan and Kimberly Marcotte
Anthony and Holly Martin
Ben and Hannah May
Tim M.D. and Carly McAteer
Eric McCue
Kat McDonald
Brian and Christina McDonough
Sara McLaughlin
Wade and Katherine Millett
Jordan and Lindsay Milne
Nate Moody
Jerry and Lisa Morin
Sara Morris
Zack and Marie Mueller
Joshua and Marci Murphy
Adrienne Nardi
Chris and Sara Nelson
Jason and Diana Nelson
Lee Nelson and Cindy Williams
Nelson
David and Cathy Niles
Paul and Frances O'Brien
Anna O'Connor
Katherine Oliver
Patrick and Sue O'Reilly
Michael and Julie Ouellette
Erin Ovalle
Jim and Amy Parker
Quin and Lynn Peel
Mark A. Pettingill
Christine Peura
David and Liz Plizga
Casey Prentice
Richard and Aimee Price

Kirk and Abby Purvis
Michael and Elizabeth Quinlan
Adam Rana, M.D. and Christina
Rana
Mark and Amanda Rand
Scott and Shari Redan
Jack Rent and Susan Graham Rent
Brynn Riley
Gregg Ritter
Gary and Cathy Robinson
Mike and Theresa Rosmus
Philip and Simone Ryle
Brian and Paula Saabye
Michelle Santiago
Philip and Kate Saucier
Hallee Schoyer
Pam Shangraw
Melinda Sheehee
Eric Shell
Ben and Bethany Siemen
Andrew Silsby
Kimberly Simard
Molly Skog
Bill and Jessie Souter
Dino and Lynn Spugnardi
Will Stiles and Hilary Rapkin
Eric and Kim Swanson
Jennifer Sweeney
Natalie Talbot
Ben Theriault
Charlie and Ellen Therrien
Isaac and Katie Treem
Scott and Kylie Tremble
Scott and Kim Twitchell
Michael Vail
Kristen Valdmanis
John VanLonkhuyzen and Nicola
Morris
Samip Vasaiwala, M.D. and Shikha
Vasaiwala
Diana Viles
Rhonda Vosmus
Robert and Brigid Waeldner
Ian and Penelope Wagge
Tara Walker
Conrad and Sandy Welzel
Charlie and Aislinn White
Lance and Donna Wieland
Carl and Stephanie Wilkinson
John and Tiffanie Winters
Jack and Amy Wu
Erica Young
Sam Zager, M.D. and Tracy Zager
Michael and Janice Zurlo

GOLF SPONSORS

Swing "Fore" the Center Golf Sponsors

MaineHealth
The Thomas Agency

Ac Sponsor:
Tex-Tech Industries, Inc.

Putting Sponsor:
Patrons Oxford Insurance

Tee Sponsors:
Anthem Blue Cross Blue Shield
Approved Home Mortgage
Baker Newman Noyes

Thank You

Baldacci Consulting Group
Bernstein Shur
Boulos Asset Management
Joe and Becky Delois/Denovo, LLC
Beth DeTine
Duncan Macdougall Foursome
Gorham Savings Bank
Granite State Development Co.
Jim Godbout Plumbing & Heating
Jones, Rich, & Barnes
National Housing Insurance Group
Old Port Advisors
Redington-Fairview General
Hospital

Residential Mortgage Services
R.M. Davis

Saco & Biddeford Savings
Institution

Tim McAteer Foursome
Travis Gilbert Foursome
Vasaiwala and Thompson
Foursome

Ball Launcher Sponsors:

Dotens Construction
Great Falls Marketing

Green Sponsors:

PM Constrution
Seafax

MIDSUMMER NIGHT'S SOIREE

Mid-Summer Night's Soiree Sponsors

Kennebunk Beach Realty
Saco & Biddeford Savings
Institution
Stone Coast Fund Services

Host Sponsor:

Vinegar Hill Music Theatre, LLC

Supporting Sponsors:

Acadia Benefits, Inc.
The Baker Company
Biddeford Savings Bank
Kennebunk Savings Bank
MaineHealth

Norway Savings Bank

Program Sponsors:

Atlantic Federal Credit Union
Haley's Metal Shop
Northeast Credit Union
Northern Light Mercy Hospital
P & C Insurance
PM Construction

Silent Auction Donors:

Coastal Maine Kayak
Cottage Breeze Day Spa &
Boutique
JetBlue
J.S. Woodfish
Nonantum Resort
Ogunquit Playhouse
Sea Dog Brewing Company

BEACH TO BEACON

Sponsors:

Sprint:

Maine Auto Service

Jog:

The Great Lost Bear

Walk:

The Clark Lofts on Pleasant
Eldredge Lumber & Hardware, Inc.
Evergreen Credit Union
Mister Bagel
University Credit Union

In-Kind:

Fleet Feet Maine Running
Rose Foods

Donors:

Tom Abello
Hilary Allwarden
Wendy Anders
Jonathan Asen
Peter Asen
Steve Asen
Alice Baye
Jane Beatty
Mary Lou Bethune
Isabel Blanco Araujo
Sarah Branchfield
Garrick Brown
Heather Brown
Susan Brown
William Brown
Jenilee Bryant
Kelsey Burt
Daniel and Katie Butler
Kenneth Butler
Ryan Carpenter
Tammy Champagne
Marty Childs and Janis
Childs-Riehle
Stephanie Cohen
Katherine Collins
Jesse Connolly
Alex Coppola
Glen and Susan Cummings
Tom Dafoe
Meg Davis
Sylvia Decker
Tony and Julie Degenhardt
Randolph Del Rossi
Ashley Dobbs
Kimberly Donnelly
Nancy Downing
David Dunlap
Lou and Rose Dunlap
Tom Dunlap and Maureen Kearney
Diane Dusini
Asha Echeverria
Matt Edmonds
Gail Edwards
Michael and Janet Efron
Elsmere BBQ & Wood Grill
Matt Estabrook
Anne Fahey
Carolina Ferreyros
Jennifer Finkelstein
Rosie Fitzpatrick
Lynn Foley
Rebecca Foley
Mary Frazee
Andrew Gattine
Heather Gendron
Travis Gilbert
Deborah Giroux

Doris Gnauck
Shawn and Mae Gosselin-Luckern
Jane Gregory
Kate Guerrette
Georgia Harlow
Katie Hawkins
Peter Herzog and Julia Bloom
Herzog
Belle Hilmer
Harry and Gracie Hilmer
Scott Horton
Ann Houser and Nancy Field
Matt Houser
Kate Hunter
Mariausz and Judtya Jankowski
Stacey Jenkins
Shannon Johnson
James and Susan Johnston
David Kaiser
Ann Kearney
Nick Kearney
Connie Keeley
Keeley Disability Consultants
Maureen Keeley and Cheryl
Greaney
Katie Keister
Jeff and Leslie Kessler
Diane Keubler
Kids First Center
Katherine Knox
Nicholas LaJoie
Lindsay Leone
Debra Lessard
Barry and Elizabeth Lewis
Richard and Juliana L'Heureux
Alexander Libin
Bob and Julie Libon
Kyle Lierman
Peter and Lisa Lyon
Kathleen Lemon Maier
Mark and Teresa Maroon
Andrew Martin
Martin's Point Health Care, Inc.
Alysia Melnick
David and Peggy Miller
Halliday Moncure
Huck and Kayla Montgomery
Jerry and Lisa Morin
Pamela Nachajski
Richard Newcomb
Elizabeth Page
Karen Pearl
Anthony Perkins
Galen Perkins
Abigail Phillips
Melissa and Stephen Pizzolato
Prescott Jamieson Murphy Law
Group, LLC
Linda Principe
Tom Quinn
Samuel Reed
Marissa Rhodes
Amanda Richer
Dan Riley
Lauren Rogers
Rosa Rosario
Mae Roy
Suzanne Roy
Alan Russell

Darlene Sanborn
Deborah Sanborn
Gregory Sands and Mary Sexton
Sands
Jacques Santucci and Patricia
Rosi-Santucci
Andrew Schmidt
Joshua Schultz
Leelie Selassie
Dr. and Mrs. Peter Shaw
Lois Shoemaker
Jack Simonds
Jennifer Small
Beth Smith
Carol Soucie
Dolores Soule
Shiloh Theberge
Tracy Dawn Thibodeau
Leska Tomash
Ed and Megan Tumavicus, M.D.'s
Unum Matching Gifts Program
Jane Waddle
Alex Wieland
Benjamin Zager
Josh and Jana Zager
Linda Zager
Sam Zager, M.D. and Tracy Zager
Zager Family Fund

MARKATHON

2 Dine In, LLC
David Adams
Jake Adams
Nick Adriance
Michael Aikin
Chuck Alpern
Todd Alpern
Zach Alpern
Tony Alves
Laurie Anderson
Kathy Andreasen
Anonymous
Sasha Arabinko
Luke Armstrong
Atlantic Federal Credit Union
Atlantic Furniture & Reupholstery
Aura
Delilah Babbidge
Brett Barker
Elijah Barker
Matt Barry
Susan Bartlett
Kirk Bean
Brian Beauchemin
Kevin Beling
Julia Bemis
Molly Berberich
Holden Bergeron
Jesse Berke
Lisa Bertsch
Binga's Winga's LLC
Amy Black
Henry and Melissa Bliss
Madeleine Bodine
Justin Boucher
Dan Boyd

Donors

Doug Brooks
Belamy Brophy-Baermann and
Emma Walker
Jeff Brown
Todd Brown
Wyatt Brown
Capital Consulting Partners
Jeannette Carr
Reggie Carter
Casco Federal Credit Union
Michele Cecere
Rob Chalou
Dollie Chase
City Kitties
Andrew Collins
Cory Cormier
Savannah Cormier
Brad Cortright
Thomas Coyne
Monique Cummings
Charlie Davis
Kate Day
April Delaware
Nick and Lianna DellaTorre
William DePippo
Alex Deraps
Tom Dolloff
Ashley Doyle
Benjamin Driscoll
Linda Dugas
Joe Dunbar
Shawn Duross
Edward Eastabrooks
Logan Estes
Brian Fabry
Justin Felix
Melanie Floyd
Tashonda Ford
Jenn and Matt Fortin
Sarah Edith Foster
Four Seasons Services
April Fournier
Abby French
Alison and James Gallagher
Bryan Gallant
Jill Garr
Charlie Gaylord
Gregory Getchell
Jim Giberson and Eliza Warren
Giberson
JoAnna Gignac
Tomi Lynn Gilman
Sheridan Giordano
Golf & Ski Warehouse
Kristen Gottuso
Andrew Govatsos
Great Falls Holdings
The Greg Altman Foundation Inc.
Twin Grizzly
H. H. Sawyer Realty Company and
Daughters
Chris Hafford
Todd Hagerman
Augusta Hahnel
Donna and Alan Hahnel
Melissa Hanscom
Mike Hanson
Mark Hare
Jay Harmon

Russell Harmon, Jr.
Stephen Hart.
Matthew Hartnett
Rachel Hasty
Deborah Henry and Edith Aronson
Anne Heros
Karen Hill
Mary Hiltonsmith
Carolyn Hird
Adam Holmes
Amanda Houts
Michael Iceland and Jessica Lovitz
Anita Jackson
Mary Kate Jamen
Pete Johansson
Lisa Johnson
Lorraine Johnstone
Chris Jordan
Jesse Joy
Sherri Kaufman
Elisabeth Kelley
Tracy Kelly
Brooke Kimball
Shane Kinney
Heidi Kirn
Teresa Konczal
Matthew Labelle
Buddy LaCombe
Jaimee Lambert
Carla Landers
Jason Lang
Jason Lanoie
John and Sally Leavitt
Jeff Lebida
Sandra Lee
Nicholas Lefebvre
John Leonard
Marc Listewnik
Greg and Kelly Lloyd
Lone Pine Brewing Co, LLC
Tom and Sarah Long
Neil and Suzanne Lowell
Shanna Lueder
Eoin and Louise Lynch
George Madden
David and Leslie Mailhot
Maine Appliance, Inc.
Brian Maloney
Jason Mancini
Mandalorian Mercs
Chelsea Marquis
Thomas Martel
Cullen Martin
Ian Mayo
Michelle L. McCarter
Daniel McDevitt
John McDonough
Carrie McIntosh
Lauren McKenney
Meg McNally
Braden Merrick
Eric Metcalf
Midcoast Federal Credit Union
Elizabeth Ann Miles, L.C.S.W.
Harlan Miles
Robert Miles
Geno Minervino
Rita Moore
Matthew and Emily Morey

Jerry and Lisa Morin
Stephanie A. Morris
Elizabeth Mott
Mountaineer Property Group, LLC
Kevin Murphy
Nancy Nally Nadeau
The Never Forget Project
New England Offroad Outfitters
LLC
Nosh Kitchen Bar
Julia Noyes
Christopher O'Brien
Patty O'Brien
Jimmy Olore
Wayne and Michelle Oosterman
Dylan Orr
Kate O'Toole
Juli Ouellette
Oxford Casino
Nelson and Toni Parise
Paula Parisi
Partners Bank
Emily Patrick
Jennifer Patterson
Tracy Payne
Elizabeth Peary
Nick Pellegrino
Lucas Perry
Martha Petersen
Stephen Peterson and Kathleen
Swienton
Sheila Pettyjohn
Christine Peura
Anne Pickering
Plague Industries
Point Promotional Group
Aimseil Ponti
Janice Pratt
Kristin Ramby
Mark and Amanda Rand
Ben Reeder
Madeline Rheume
Michael Rich
Carol Riley
Paul Robbins
Elizabeth and Paul Roberts
Stephen Rodson
Jamie Rogers
Lexi Rose
Jennifer St. Louis
Patricia Sanderson
Dominick Santise and Joanna
Colombo-Santise
Rik Sargent
Peter Sawyer
Mark Sayer
Andrew Schmid
Shamrock Sports
David Sharp
Phil Sherman
Kimberly Simard
Charlie Simmons
Erin Smith
Elizabeth Snow
Andy Solari
Scott Sorry
Jill Soule
Christopher Sprague
Springer's Jewelers

Drew and Robin Stevens
Kayla Stewart
Robyn Stinson
Jen Stuart
Janel Sullivan
Kim Svanda
Karen Szalajeski
Deirdre Taylor
Taylor Made Event Services, LLC
Lynne Tetreault
Steve Theo
Denise Tilly
Betty Tinkham
Crystal Tobias
TownSquare Media
Nat and Judy Tupper
Cynthia Turnbull
Anthony Ujhelyi
Christopher Varnum
Laura Vinal
Karen Vire
Ron Vire
Summerlee Visser
Nathan Wallace
Michelle Warneke

Leara Webber
Nick Webber
Pete Webber
Curt Wetzel
Carol Whitten
Rob Wilcox
Steven Wiley
Lisa Wilson
Jody Winant
Christopher Woodford
Rebecca Woods
Gary Wright
Manley Yates
Anna A. Zafirson
Amy Zamrock
Siena Zerillo
Michael and Janice Zurlo
Zwellyn Pottery

Thank You

VIRTUAL PET WALK

Lynn Angell
Lisa Atwell
Tuck Barclay and Lucy Norvell
Eileen Beasley
Linda Bernard
Caitlin Bishop
Ida Connolly
Andrew Curtis
Savannah DeVoe
Piper Etzel
Katie Ford
Meg Harpool
Caitlyn Hecox
Deborah Henry and Edith Aronson
Beth A. Kittredge
Mary Jo Koran
Kim Leisey
Eileen Manglass
Sara McLaughlin
Chad Micucci
Doug and Terry Mitman
Jerry and Lisa Morin
Patty O'Brien
Paul and Frances O'Brien
Nelson and Toni Parise
Tara Patterson
Amanda Petrozzini
Rhonda Ring
Sue Solano
Allison Thomas
Tamara Thomas
Mercedes and Jess Vail
Sydney Walker
Heather Weste



I support the Center because they have created a magical place where families can go in desperate times to cry, laugh, share stories and be totally supported.

- Jennifer Harnis

Director of Human Resources
Baker Newman Noyes
Former Center Human Resource Committee



We're proud to support such a worthy cause!
We know that the Center's job has surely become harder during these difficult times.

- Matt and Brian Haley,

Haley's Metal Shop



For the families who utilize the Center's services, for the volunteers and board members who donate their time; this organization is more than a building; it is a beacon of love and remains a part of you always.

- Sharon B. Sesling-Labonte

Vice President
Senior Wealth Management
Compliance Officer & Head Trader
Camden National Wealth Management
Former Center Board Member



I have always supported the Center given its importance in our community. But I had no idea what a significant role they actually filled until my family faced the sudden passing of my 16-year-old son, Shane.

The Centers' staff and resources were there immediately to help my children navigate the emotions of losing their brother, and supported me and my family, as we grieved. They provided all of us a safe place to express our deep feelings of loss. Our journey started more than five years ago and we remain connected and committed to the Center, its people and its mission.

- Kim Donnelly

SVP, Director of Business Banking
Gorham Savings Bank
Former Family Member

We've made every attempt to properly acknowledge our loving support. In the event we have made an error, please reach out to Patty@cgcmaine.org.

Thank You

TO ALL OUR VOLUNTEERS



Thank You

PROGRAM FACILITATORS

Lynn Abood
Ruth Alden
Danielle Alexander
Keeley Anderson
Peter Arndt
Paul Attardo
Campbell Badger
Marianne Bean
Jessa Berna
Karen Blethroade
Henry Bliss
Olivia Blom
Ryan Bloom
Mike Boucher
Mary Bracken
Ann Marie Briggs
Kate Brown
Renee Bunker
Beka Burns
Linda Card
Anne Cass
Dawn Cedrone
Caitlin Cleary
Judy Cohen
Marty Cohen
Sam Coleman
Heather Corey
Valerie Craig
Tom Crane
April Cummings
Katie Cyrus
Skye Danler
Mary Dempsey
Jocelyn Dimple
Eric Dodge
Jennifer Donaldson
Emily Drummond
Zach Duperry
Hannah Durham
Lynn Foley
Marjorie Ford
Susan Ford
Paul Foreman
Michelle Foster
Leah Foti
Cheryl Fullerton
Matt Gee
Lani Geistwalker
Helen Gideon
Bethany Gilpatrick
John Goetz
Colleen Golden
Shelley Grant
Doug Green
Mary Griffin
Tanya Grigsby
Kyia Grimshaw
Steph Haines
Marijo Hamilton
Alyx Hannigan
Emily Harradon
Steve Hart
Chuck Henegar
Deb Henry
Tatyana Herron
Lynne Holler
Tom Hopkins

Jackie Huynh
Monique Irshwood
Larus Isfeld
Amy Johnson
Valerie Jones
Eva Kecskemethy
Maureen Keeley
Abby Koren
Hazel Koziol
Candi LaClaire
Laurel Ladd
Carolyn Lane
Bonnie Laughlin
Tabetha Leach
Cathy Lestage
Melissa Ligotti
Helen Lonegan
Tom Mackenzie
Jim Maier
Kim Marcotte
Joan Martay
Rose Mary Muir
Sue McCulley
Marty McGannon
Duncan McLean
Paul Menard
Stephanie Morris
Megan Murrow
Peg O'Brien
Cathleen O'Donnell
Emily Olick Lanao
Maureen Olsen
Cathy Paglio
Toni Parise
Suzanne Patterson
Galen Perkins
Martha Petersen
Christine Peura
Sheryl Plummer
Jess Porter
Claire Prescott
Wendy Ray
Carter Raymond
Jori Rynberg
Carolyn Sass
Connie Shaw
Maeve Shea
Jay Sherwin
Linda Siglock
Karen Simpson
Frank Sinnock
Judi Slotsky
Tristan Smaldone
Leslie Smith
Sue Solano
Sydney Sprague
Teresa St. Peter
Jenn Stockless
Pat Stone
Ed Szalajeski
Pam Szalajeski
Jean Taylor-Kiley
Matt Theodores
Carole Thoits
Nova Tower
Karl Trautman
Lindsey Tucker
Mary Villano
Linda Waite

Darnell Yao
Drew York
Heather Young
Rebecca Zabot-Hall

PROGRAM INTERNS

Sahra Ahmed
Megan Arsenault
Caroline DeNoia
Christina Ernst
Kristen Gieras
B Hailey
Aubrey Haskell
Leanna Parker Bair
Francesca Perlov
Cassidy Smith
Rachel Spigno
Alexandra Sturtevant
Stacey White

DEVELOPMENT INTERNS

Anna Guerrette
River Hodgdon
Erin Whitcomb

OFFICE

Paige Ahrens
Barrett Alexander
Milana Austin
Tom Bannen
Ryan Barnes
Nancy Barrett
Tesla Bartone
Gail Beals
Lenny Ball
Alli Black
Molly Blansfield
Jess Brennan
Matt Bridges
Raina Brown
Chris Butler
Bill Carey
Anthony Cimino
Chris Cimino
Susie Cloutier
Brit Colascento
Ida Connolly
Sarah Consolo
Ashlee Cram
Kristina Day
Jennifer Czifrik
Don Davidson
Dillon Davis
Caroline DeNoia
Shane Duchesne
Tom Dunlap
Jeremy Dyer
Kurt Elliott
Jess Elliott
Michelle Esposito
Jim Fickett
Anne Foster
John Gaudet
Kati Glencross
Mary Griffin
Chandler Hawkes
Michelle Hay

Cassie Haye
Tom Hennessey
Heather Hewey
John Holland
Diana Howe
Jackie Huynh
Lisa Hutchins
Evangelos Kapothanas
Maureen Kearney
Eva Kecskemethy
Molly Kelly
John Larrabee
Aoife Lee
Thang Lee
Helen Lonegan
John Loetz
Ben Madore
Jon Maniscalco
Kim Marcotte
Anna McDonald
Abby McCarthy
Jason McCormick
Sara McLaughlin
Jason Michaud
Drew Milburn
Savannah Mooney
Julie Morgan
Laura Morcom
James Nolan
Patrick Obery
Dianna Oliver
Brad Ouellette
Ashley Owens
Stephanie Pederson
Toni Parise
Betsy Pope
Ann Price
Erika Rouille
Ann Marie Rousselle
Linda Roy
Marguerite Rubino
Kara Shamsi
Cole Shiers
Cassidy Smith
Sue Solano
Judy Stark
Nicole Tirado
Brittany Wales
Janet Weston
Kathleen Whelton
Maureen White
Stacey White
Thomas Woodman
Madison Weymuth
Darnell Yao
Jack Yao
Charlie Young
Sophia Zarlo

Organization Volunteers

IDEXX Laboratories
Infinity Federal Credit Union
PSL Services/STRIVE
Wayfair
Work Opportunities Unlimited

EVENT VOLUNTEERS

Kristy Andrews
Brittany Banville
Gail Beals
Chad Boucher
Matt Boucher
Dillon Brabants
Mary Bracken
Kari Brawn
Jenilee Bryant
Mary Cahill
Kenneth Chen
Carissa Chipman
Marc Chipman
Chris Cimino
Neal Cowles
Jenn Czifrik
Caroline DeNoia
Timothy Drapeau
Jeremy Dyer
Katie Estabrook
Abby Felker
Matt Fitzgerald
Lynn Foley
Timothy Freme
Lynne Gagnon
Deborah Giroux
John Goetz
Mallory Gould
Anna Guerrette
Briana Hailey
Lindsey Hall
Kimberly Harvell
Joshua Harvell
Cassie Haye
Bridget Hester
Brandelyn Hodgdon
River Hodgdon
Kevin Hunt
Rajna Kecojevic
Anne-Mari Kelly
Emily Kidd
Mary Larkin
Janet Letalien
Minh Ly-Gordon
Kim Marcotte
Nicky Martin
Marty McGannon
Samantha Menzel
Rory O'Connor
Monicah Paquette
Katie Pazienna
Emily Percival-Snyder
Tammie Perkins
Ashley Peterson
Lindsay Pfeiffenberger
Kristen Preble
Elaine Reed
Mena Richard
Jack Rideout
Ann Marie Rousselle
Marguerite Rubino
Mary Schafhauser
Molly Sheehan
Cassidy Smith
Teresa St. Peter
Nancy Thompson

Tammy Tracy
Ashley Tyler
Kathy Ventura
Carina Walter
Janet Weston
Erin Whitcomb
Stacey White
Ben Wigand
Kelly Williams
Rani Wilson
Mike Wilson
Margaret Ybarra



Save the Date

Monthly

Volunteer Info-sessions

Contact volunteer@cgcmaine.org to sign up for the next one!

October 13th, 2020

Swing "Fore" the Center golf tournament

Back-up date should Covid-19 require it: May 18th, 2021

November 2020

National Children's Grief Awareness Month

November 19th, 2020

National Children's Grief Awareness Day

November 6, 2020

National Alliance for Grieving Children
Virtual Fall Conference on Children's Grief.
Webcast "Youth Bereavement Support:
A Road Map to Inclusion."

December 1st, 2020

#GivingTuesday

February 5th, 2021

Virtual Love Gala



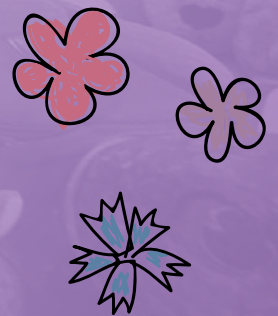
Call

(207) 775-5216

Visit

Portland: 555 Forest Avenue Portland, Maine 04101

Sanford: 893 Main Street Sanford, Maine 04073



Connect

 <https://www.facebook.com/cgcmaine>

 <https://www.instagram.com/cgcmaine/>

 <https://www.linkedin.com/company/the-center-for-grieving-children/>