

# from the heart

NEWS FROM THE CENTER FOR GRIEVING CHILDREN

*Our 2015 Report to the Community*



“What a relief to find such kindness  
and compassion at the Center.”

WHEN THERE IS SADNESS, FEAR, AND LONELINESS,  
YOU BRING LOVE.

the  
**center** for  
grieving **children**  
where families find hope and love



Fall/Winter 2015

# WELCOME

## About the Center for Grieving Children

For children and families confronting loss, change, and grief when someone close to them dies or is seriously ill, the Center for Grieving Children is an oasis of loving support. Free for families, and facilitated by trained volunteers, the Center's age-specific peer support groups meet in Cumberland and York counties. Center training, information, and crisis response is available to schools, workplaces, and other organizations. Founded in 1987, the Center today reaches more than 4,000 people annually, and depends on funding from individuals, businesses, foundations, and United Way.

### Staff

Anne Lynch  
*executive director*  
Sara Asch  
Sue Calhoun  
Anne Fisher  
Susan Giambalvo  
Valerie Jones  
Sandy Lovell  
Lisa Morin  
Marie Sheffield  
Erica Swan  
Elyse C. Tipton  
Janice Zurlo

### Advisory Council

Dr. Christine Bennett, M.D.  
Gail Cinelli  
Kathy Crispin  
Joe Delois  
Michael Dubyak  
Shawna Ohm  
Gary Robinson  
Abdimajid Sharif  
Andy Stickney  
Will Stiles  
Jacob Watson

### Board of Directors

Amanda V. Rand, Esq.,  
*president*: Spinnaker Trust

Kimberly Simard,  
*vice president*: L.L.Bean

Mike Lane, *treasurer*:  
IDEXX Laboratories

Joy Symon Fall, *secretary*:  
Kennebunk Savings

Amy Booth  
CBRE|Boulos Property Mgmt

Gail Bruzgo  
Omni's Coffee and  
Bruzgo & Kremer LLC

Ron Cain  
Legacy Holding Co.

Doug Carr  
Carr Consulting

Christopher Cimino  
C.M. Cimino Inc.

Julie Grosvenor, M.D.  
Southern Maine Health Care

Peter F. Herzog  
Bernstein Shur

Katherine Hogan  
Legacy Properties  
Sotheby's International Realty

Kevin M. Hunt  
R.M. Davis

Gretchen A. Johnson  
Verrill Dana LLP

Tracy Keegan  
Unum

Mary Larkin  
Diversified Communications

Paul Letalien  
Baker Newman Noyes

John Mosley  
Mosley Financial Group

Erin Ovalle  
WMTW News 8

Mark Pettingill  
Patrons Oxford Insurance

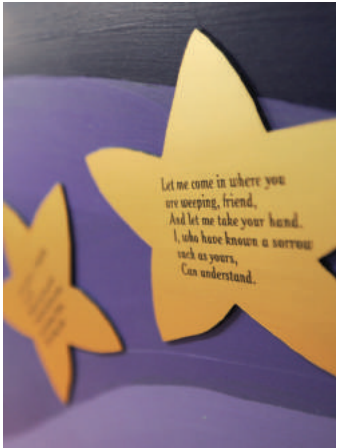
Patricia Rosi Santucci  
Wellness Connection of Maine

Melissa Smith  
WEX Inc.

Edward Tumavicus, M.D.  
Maine Medical Center Family  
Medicine Residency Program

Adam Walker  
Conroy-Tully Crawford  
Funeral Homes

**Bill Hemmens**  
(1945-98), founder



## It's what you do.

Our 2015 Report to the Community shows what the Center accomplished during the year. But who really got it done? You!

The Center's success is because of you—the donors, volunteers, and business sponsors at the heart of our free service to families and our work throughout the community.

We proudly provide high-quality grief-support programs, with demonstrated outcomes, for children and their families.

We support the southern Maine community—in schools, workplaces, and agencies—through crisis response and loss- and grief-related information and training.

We're discovering new opportunities to support the loss and grief needs of elementary, middle, and high school students resettled locally from war-torn countries.

And we're working to increase awareness, use, and volunteerism that will expand our work within York County, where we have offered on-site service for four years.

As it has from its founding days nearly thirty years ago, the Center relies on people like you who believe no child should have to grieve alone.

On behalf of those children, their families, and our shared community, thank you.



Anne Lynch  
*Executive Director*

*Please call to arrange a tour of the Center for your group, or a Center presentation at your workplace.*

**CGCMAINE.ORG | 207.775.5216**

Home: 555 Forest Ave., Portland, ME 04101

York County Site: 893 Main Street, Sanford, ME 04073

share • follow • tweet



Connect with the Center on these social networks



**Cover:** The "Hope Butterfly" symbolizes National Grieving Children's Awareness Day, the third Thursday of November.



# welcoming

## OUR VOLUNTEERS

### The Heart of the Center

Last year, volunteers gave the Center more than 24,000 hours of their time.

- More than one hundred of them volunteered weekly to facilitate peer grief-support groups. Facilitators receive thirty hours of initial training and ongoing in-service training.
- Volunteers made our events successful. And at the Center, office volunteers and employee volunteer groups gardened, painted, cleaned, and more.
- Plus, we can't thank enough the volunteers who served on our Board of Directors, Advisory Council, and Intercultural Advisory Council.



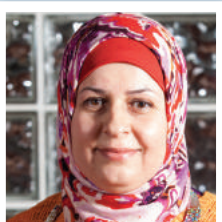
**Sorcha Cribben Merrill**  
facilitator

*"Everyone's voice is heard here. And each one is strengthened by trust."*



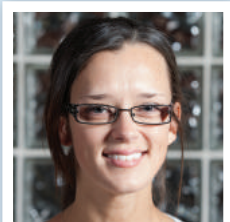
**Peter Prinz**  
facilitator

*"There is no greater satisfaction than to watch the darkness leave someone's eyes and see them begin to shine again. That is the power of working together, to help each other heal."*



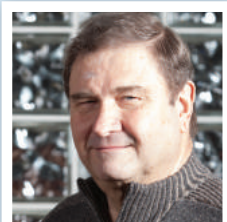
**Sanaa Abduljabbar**  
Intercultural Advisory  
Council member

*"The Center made obvious changes in my son's life. So I made my decision to become part of the family who can create smiles in other children's lives."*



**Tricia Jamiol**  
facilitator

*"Where else can you sit in a room with twenty people and get to know them through their hearts?"*



**Ed Szalajeski**  
facilitator

*"My family is passionate about helping others on their journey at the Center, where we have received so much support."*

### My boss sent me!

They cleaned, gardened, painted, moved furniture, sorted supplies, donated items, and more! Energetic employee volunteer groups made great things happen throughout the year at our service sites in Sanford and Portland. They had fun, too, as they got to know the Center's work and one another.



*2015 United Way Day of Caring  
gardened and cleaned.*



*IDEXX cleaned rooms and  
donated items.*



*Diversified Communications  
organized our supplies.*

**Would you like to become involved with the Center? Learn more about volunteer roles and training at our monthly orientations in Portland and Sanford. Call 207.775.5216 or email [cgc@cgcmaine.org](mailto:cgc@cgcmaine.org).**

# OUR PROGRAMS AND SERVICES

## Bereavement Peer Support

**Bereavement Peer Support** is the core of the Center's work providing peer grief-support groups for children and teens and their adult family members. We also offer these groups for young adults, bereaved parents, and young widows/widowers/partners.



“My preschool daughters and I came to the Center about six weeks after my wife died. We kept coming, and it saved my life.”

—Ed, who received Center services in Portland

“At the Center, I could allow myself to feel grief for me, and for my child, whose father was gone. We were in a place where we felt understood, loved, and cared for. It was OK not to be strong, and to be angry, frightened, sad, or just not feel at all.”

—Cathy, who received Center services in Sanford

“When my sister died suddenly, two phone calls with the Center helped me and my mom work out what my niece and nephew needed soonest. It was such a rough time, and money was also a big concern. I will be forever grateful.”

—Teresa, who called from Biddeford

- In Portland and Sanford last year, this program served 209 children and teens, and 153 adults. New this year was a time-limited young adult group in Sanford.
- Throughout the year—in all Center programs—we continued to implement the program evaluation survey created to guide program development by helping participants reflect on personal changes along their grief journey.
- In the spring, a newly introduced “family night” with food and art-making gave participants a different and well-received way to support one another.

## Tender Living Care

**Tender Living Care** serves families living with the changes and losses that a family member's serious illness creates. It is available to support families as soon as a diagnosis is made.

- The Center's work building awareness of our “TLC” program increased to sixty the number of people served.
- System changes made it possible for more families to immediately begin attending.
- Service to TLC families included support by conference call and at hospital and hospice sites.

“I called the Center, in tears, worrying about my kids, when my mom and I were diagnosed with breast cancer, and my husband had a potentially cancerous tumor. In the TLC program, we have felt so incredibly supported. My children love it because they can express their feelings and know they are not the only kids going through something this hard. The commitment of Center volunteers is overwhelming. I have never known a resource like this.”

—Tracy, whose family receives service in Portland



# loving

## Multicultural Program



**The Multicultural Program** works with local schools to serve children resettled in Maine from war-torn countries. **Intercultural Advisory Council** members help the Center offer services that are inclusive, community-based, and culturally relevant.

- During the school year, the program served fifty-three elementary, middle, and high school students from Portland Public schools, and held two summer sessions.
- The University of Southern Maine and Portland Public Library displayed artwork created collaboratively by students in the program and USM artist-in-residence Traci Molloy.
- A standing-room-only Community Conversation gave Intercultural Advisory Council members a forum to share stories of loss, grief, change, challenge, and resilience experienced by those whose collective losses include loved ones and homelands.

Naomi moved to the United States at age nine, fleeing violence in South Sudan, where she had twice been shot. At the Center, she opened up about feeling isolated due to her loss and trauma and the differences from others she feels because of skin color and a gunshot wound to her face. Program peers helped her build confidence to speak up more with family and friends and feel empowered. Last year, she said, “I’m different—and loving it!”

## Community Outreach

Training and Crisis Response in the Community brings schools, workplaces, local agencies, and other organizations information and support to help grieving children and adults in their communities.

- Several training sessions for a student travel organization focused on intercultural awareness related to grief, and protocols for responding to student deaths.
- Crisis response to schools included support when a student, teacher, or other school-community member died, sometimes through violence or suicide.
- One example of presentations requested last year is a Center keynote on children’s grief for 100 volunteers at the New Hampshire Hospice Volunteers Education Day.

**“It was extremely hard to see five-year-old students grieving for their classmate, who died from a terminal illness. The Center helped our teachers, administrators, and the students’ parents learn how to support them. Every single thing the Center told us about behaviors and emotions we might see from these young children turned out to be true and made it so much less bewildering for staff and parents to know how to support the children. Today, nearly three years later, we see that this group of children is more advanced than even older students in their empathy and compassion for others.”**

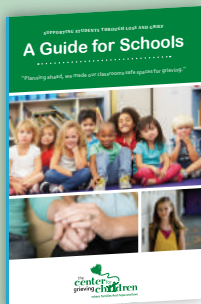
*—Ryan Quinn, principal of Kennebunk Elementary School*





## • highlights •

Published *A Guide for Parents* and *A Guide for Schools*, booklets with strategies for supporting grieving children and teens. Contact the Center to receive them.



Delivered webinars for and participated in the annual symposium of the **National Alliance of Grieving Children**.

Trained **six interns** from colleges throughout New England who served as facilitators and learned about working in a nonprofit organization.

Added to our Web site: **teen-made video clips** that introduce teens to the Center, and an **online catalog** of books and videos we make available to the public.

Increased our volunteer facilitators' skills through in-service trainings about grieving families' challenges and grief topics including suicide.

Welcomed donations to help volunteers create a **winter holiday toy shop** for Center families. Said one grateful mom, "It was so lovely, I burst into tears of relief."

Drew attention to national **Children's Grief Awareness Day**, the third Thursday in November, through social media, an op-ed in the *Portland Press Herald*, a customized video thanking Center donors and volunteers, and outreach within local workplaces.



## OUT AND ABOUT

### #LOVEGALA

Volunteers + community + love added up to a record-breaking \$200,000 fundraised in February by **Love Really Counts: Our 2015 Auction and Dinner Gala**. As Love Sponsor, IDEXX Laboratories, Inc. continued top-level support. WCHS6 News Anchor Cindy Williams spotlighted our peer-group facilitators. Portland's landmark Time & Temperature clock flashed "LOVE GALA." The silent auction and the live auction led by Tom Saturley of Tranzon Auctions featured once-in-a-lifetime experiences. On an evening made magic by Transformit lighting, circus performers, marimba music, food, and drink, our guests also were treated to a delicious dessert: best-selling author Monica Wood warmly sharing poignant experiences about the universality of loss. It was an unforgettable evening.



John Reed Photography

Top left: Patricia Rosi Santucci, Katie Hogan, Lianna Doane, Kimberly Simard, Gail Bruzgo; Bottom left: Monica Wood and husband Dan Abbott; Bottom middle: Ron and Terry Cain; Far right: Doug Carr and Bill Caron



Chris Cimino, John Mosley, Paul Letalien, Melissa Smith, Kimberly Simard, Quincy Hentzel, Erin Ovalle (sitting), Sarah Mosley, Lianna Doane, Nancy Thompson (sitting), Gail Bruzgo, Amanda Rand, Peter Herzog, Gretchen Johnson, Ed Tumavicus

### Holiday Generosity

For the second consecutive year, the Portland-based office of Eimskip USA made the Center beneficiary of its holiday charitable party, donating \$40,000 to our work. Making the evening festive and successful was a crowd of 200 guests from local businesses and organizations, including Center board members and friends (above).

# connecting

## Sea Dogs Summer

It became a two-year-old tradition in the summer of 2015: **Center Day at the Sea Dogs**, sponsored by MaineHealth. A great day at the ball park for current and alumni Center families, volunteer, and staff.



Dad Kristopher and son Jake Fish.  
Jake got to throw out the first pitch!

## Markathon 2014

It rocked! With Mark Curdo in the DJ seat, the seventh annual **93.4 WCYY Markathon** broke \$50,000. The five-day radio week played on-air songs of callers' choosing in exchange for their financial donations to the Center. Joining Mark in the studio were Center families and volunteers, plus Center friends, including basketball Hall of Famer Dave Cowens, wicked funny comedian Bob Marley, King of Maine rapper Spose, and local music artists.



## The B2B

It's the gift that keeps on giving. As a former beneficiary of the **TD Beach to Beacon 10K**, the Center is entitled to purchase 25 race bibs for entrants. We ask that each runner raise a minimum of \$500 for the Center. In 2014, Center "FundRacers" delivered \$19,000, and in 2015, more than \$20,000.



Kelly and Dave Shutoff, FundRacers



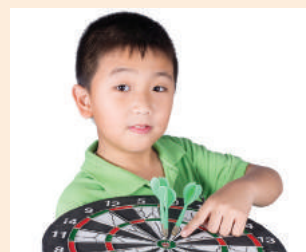
Above: Anne Wells, Kevin Montminy, Beth DeTine, Jane Petersen; Top right: Peter Carign, Vaughn Clark, Mike Frasier, and Rob Lally; Bottom right: Andy Dixon, Matt Theodores, Henry Bliss, Steve Hart

## Swing "Fore" the Center

Our **Paul Gray Memorial Swing "Fore" the Center** has become a wonderful fall event. We are especially grateful for the support and leadership of our Title sponsors, MaineHealth and the Thomas Agency, and the generosity of spirit shared by Paul Gray's family and friends. With additional sponsors and golfers, and hosted by the Purpoodock Club in Cape Elizabeth, the tournament set a fundraising record in 2014 of \$65,000 and another one, in 2015, of \$73,000.

## Community Events

Our thanks to the many community members who organized events last year to benefit the Center. Not only did they raise funds to help the Center keep our services free for families, they also spread awareness of our work. Among local events last year, three raised from \$2,500-\$6,500 each: the Unum-employee-led **Annual Legends Memorial Classic**, the Maine Dart Association's **Port City Open**, and the **Real Deal 5K**.



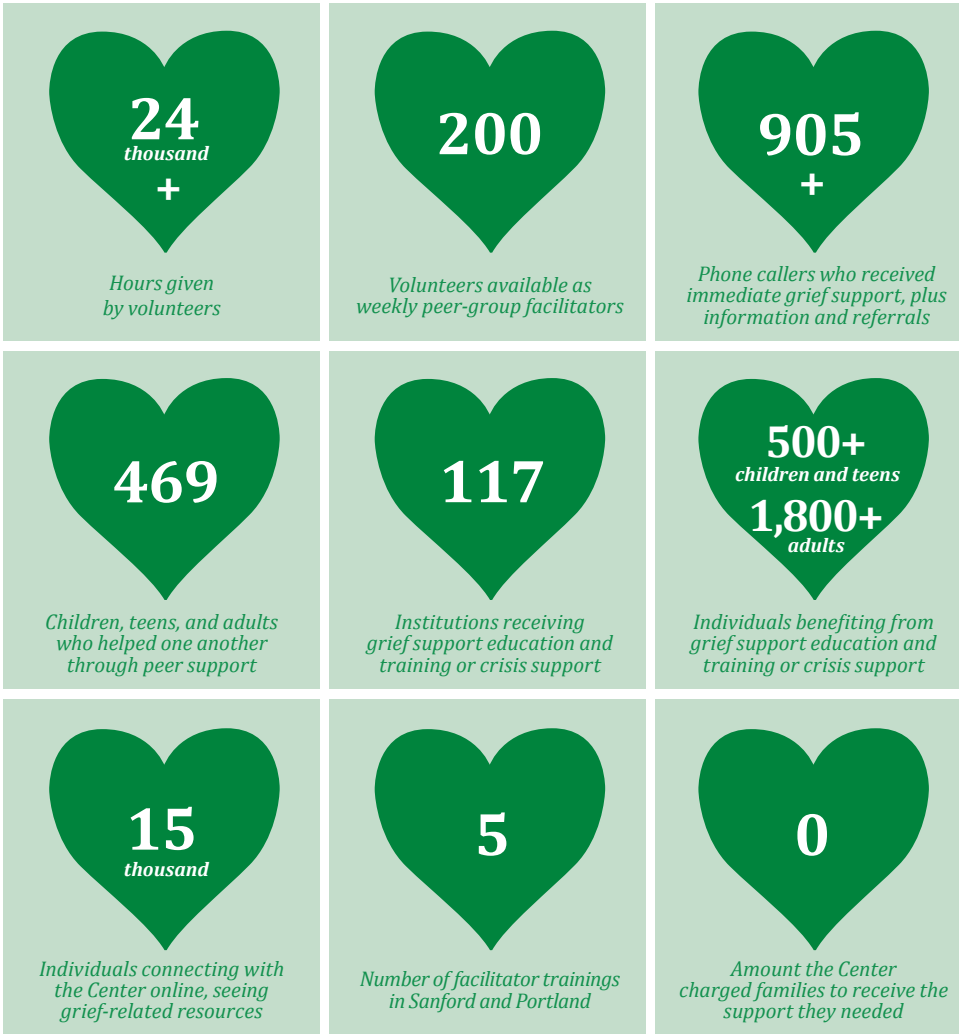


# BY THE NUMBERS

July 1, 2014 – June 30, 2015

# Support

## A Year of Big Data



## Places We've Been

- **Sample of community outreach including crisis response, training, and education**
- **Augusta:** Maine School Management Association
- **The Berwicks:** Berwick Academy, Hussey Seating, MSAD 60, Noble High School
- **Biddeford:** Biddeford Middle School, Maine Behavioral Healthcare, St. James Elementary School
- **Brunswick:** Bowdoin College
- **Cararabasset Valley:** Maine State Department of Education
- **Falmouth:** Southern Maine Agency on Aging
- **Freeport:** Maine School Counselors Association
- **Kennebunk:** Kennebunk Elementary School, May Day Festival, Snug Harbor Farm, York County United Way Coalition
- **Kittery:** Maine Behavioral Healthcare, Portsmouth Naval Shipyard
- **Lewiston:** Maine State School Nurses Association
- **Poland:** Poland Community School
- **Portland:** Americorps, Baxter School, Boys & Girls Club, Breakwater School, Casco Bay High School, Catholic Charities, CIEE, City of Portland Public Health, Connections Academy, Deering High School, InterMed, King Middle School, Lincoln Middle School, Lyman Moore Middle School, Portland Community Health Center, Portland Police Department,
- **Portland Public Library, Maine Medical Center, Multicultural and Multilingual Center of Portland Public Schools, Reiche Elementary School, Riverton Park, STRIVE, TIP - Trauma Intervention Program, University of Southern Maine**
- **Saco:** Key Bank, Peoples Choice Credit Union, Southern Maine Health Care
- **Sanford:** Sanford High School, Sanford Strong, North Parish Congregational United Church of Christ, United Way of York County
- **Scarborough:** Maine Medical Center Cancer Institute
- **South Portland:** InterMed, Southern Maine Community College, South Portland High School, STRIVE, TD Bank, Texas Instruments
- **Springvale:** Maine Behavioral Healthcare
- **Waterboro:** RSU 57
- **Wells:** York County Community College
- **Westbrook:** IDEXX
- **Yarmouth:** InterMed
- **Out of State:**
- **Guilford, Connecticut:** Kids HUGS
- **Rochester, New Hampshire:** Victims Inc.
- **Portland, Oregon:** National Association of Grieving Children

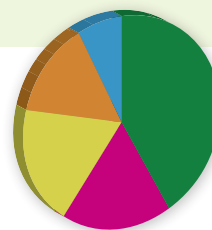
## FINANCIAL STATISTICS (AUDITED)

### Revenue

Revenue from Services*	\$0
Contributions, Grants, Events, Community Support ..	\$903,847
Investment Gain ..	\$1,214
<b>Total Revenues ..</b>	<b>\$905,061</b>

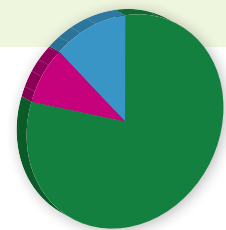
### Expenses

Program Services ..	\$681,850
Management and General ..	\$97,007
Fundraising ..	\$73,750
<b>Total Expenses ..</b>	<b>\$852,608</b>
<b>Unrestricted Margin ..</b>	<b>\$52,453</b>



### Revenue by Source

- Special Events 42%
- Grants 18%
- Contributions 19%
- United Way Allocation and Designated Donors 14%
- Misc 7%



### Expense Allocation

- Program Services 80%
- General Fundraising 8.6%
- Management and General 11.4%

\*The Center provides services to grieving children and families at no charge, through the tremendous generosity of our community.



# THANK YOU

July 1, 2014-June 30, 2015

## Corporation and Foundation Support

**We thank many leading businesses for their strong support of the Center.**

*"We are proud to support the Center and its mission to provide a safe, loving environment for children and families to express themselves during their grieving processes. It's gratifying to provide grants to local organizations that help meet the increasing needs of the community."*

— Maria Collins,  
vice president,  
New York Life Foundation

*"IDEXX is proud to support the Center and its peer support programs. It is a wonderful place, available at no cost to families in our community, where the healing power of love is incredibly strong."*

— Mike Lane,  
corporate vice president,  
IDEXX Laboratories, Inc.

*"Harvard Pilgrim is committed to inclusion in our community. The Center's Multicultural Program meets a tremendous need among young people of all cultures who are coping with loss."*

— Ed Kane, Harvard Pilgrim  
vice president for Maine

*"MaineHealth is pleased to support the Center. The unique services it provides are vital for children and families, and are a tremendous resource for our community."*

— William Caron,  
chairman & CEO, MaineHealth

*"It is with tremendous pride that WEX supports the Center for Grieving Children. Our community is filled with countless personal stories of the difference the Center has made to families in times of need."*

— Melissa Smith,  
president & CEO, WEX, Inc.

### \$35,000 +

New York Life Insurance  
United Way of Greater Portland

### \$25,000-\$30,000

Eastpoint Christian Church  
Harvard Pilgrim Healthcare  
IDEXX Laboratories, Inc.

### \$10,000-\$20,000

Pierce Atwood  
Sam L. Cohen Foundation  
General Dynamics, Bath Iron Works  
The William J.J. Gordon Family  
Foundation  
MaineHealth  
MassMutual Financial Group  
WEX Inc.

### \$5,000-\$9,999

Bank of America Charitable Foundation  
Frances Hollis Brain Foundation Inc.  
Cumberland County Fund of the Maine Community  
Foundation  
Fidelity Charitable Gift Fund  
The Eunice Frye Home Foundation  
Gorham Savings Bank  
Maine Dart Association  
Medical Mutual Insurance Company of Maine  
RE/MAX by the Bay  
Rines Thompson Fund  
of the Maine Community Foundation  
SGC Engineering, LLC  
Shamrock Sports  
Smith Family Charitable Trust  
Spectrum Medical Group  
Tex-Tech Industries  
The Thomas Agency, Inc.  
United Way of York County

### \$2,500-\$4,999

A.T. Hutchins, LLC  
Anthem Blue Cross  
Baker Newman & Noyes  
Bond, Schoeneck & King PLLC  
Margaret Burnham Charitable Trust  
Conroy-Tully Crawford Funeral Home  
Edward H. Daveis Benevolent Fund  
of the Maine Community Foundation  
H.M. Payson, Inc.  
Kids HUGS Program  
Martin's Point Healthcare  
Patrons Oxford Insurance Company  
Skillful Home Recreation  
Stoddard Charitable Trust  
TD Bank  
Unity Foundation  
Unum

### \$1,500-\$2,499

Alere Scarborough, Inc.  
August Wealth Management  
Baldwin Foundation  
Estes Charitable Fund  
Fairpoint Communications  
Fintech Securities  
Albert B. Glickman Family Foundation  
IBM Employee Services Center  
Ice-Time Charitable Endowment  
InterMed  
Jones-Rich-Hutchins Funeral Home  
Kennebunk Savings Bank  
L.L.Bean  
Littler Mendelson PC  
Losam Fund  
Maine Credit Union League  
Max Kagan Family Foundation  
New England Cancer Specialists  
Oakhurst Dairy  
Opus Consulting Group  
Rite Aid  
Run/Walk Company, Inc.  
Sellers Publishing, Inc.  
Spinnaker Trust

Systems Engineering  
The Masonic Charitable Foundation  
The Mile Foundation  
Town & Country Federal Credit Union  
Triton Foundation  
Truist  
Verrill Dana LLP  
Wellness Connection of Maine

### \$1,000-\$1,499

Allagash Brewing Company, Inc.  
Apple Lane Foundation  
Clynk Community Cash  
Creative Office Pavilion  
Dawson Smith Purvis & Bassett, P.A.  
Falmouth High School  
General Dynamics  
Holy Spirit Sodality  
Maine Community Foundation  
MassMutual Matching Gift Center  
Matrix Group Benefits, LLC  
Midcoast Federal Credit Union  
New England Offroad Outfitters LLC  
One Day at Time Fund of the Maine Community  
Foundation  
Oxford Casino  
Portland Longshoremens Benevolent Association  
Portland Pirates Hockey Club  
Portland Shellfish Co., Inc.  
Roy A. Hunt Foundation  
Sanford Savings Institution  
Smaha Family Charitable Fund  
Southern Maine Health Care  
The Mimi Foundation  
Unum Matching Gifts Program  
Vivid Motion  
York County Federal Credit Union

### \$500-\$999

Aetna Foundation, Inc.  
Amvets Ladies Auxiliary Post 2  
Atlantic Regional Federal Credit Union  
Baystate Financial Services Foundation, Inc.  
Berwick General Store & Deli  
Biddeford Savings Bank  
Bowdoin College  
Casco Federal Credit Union  
CBRE/Boulos Company  
CIEE  
Cross Insurance Agency  
Cumberland County Federal Credit Union  
David F. Talevi Foundation  
Demont & Associates  
Fabulous Find  
Falmouth Dental Health  
Falmouth Lions Club  
Fred E. Gignoux, Inc.  
Furniture Repair Services of Maine  
Girls on the Run  
Givalike  
Golf & Ski Warehouse  
Goodman Law Firm  
Great Lost Bear  
Gritty McDuff's Brewing Company  
Handyman Equipment Rental Co., Inc.  
Investment Management & Consulting Group  
Jotul North America, Inc.  
JR Squared Enterprises, Inc.  
Leonardo's Pizza  
Lions Club of Cape Elizabeth, Inc.  
Nappi Distributors  
National Alliance of Grieving Children  
New England Carpenters Labor  
Northeast Technical Institute  
Norway Savings Bank  
Osher Foundation  
Phillips Green Foundation  
Pine State Trading Company  
R. M. Davis, Inc.  
RSVP Discount Beverage and Redemption Center  
Saco & Biddeford Savings Bank  
Saint Mary's Episcopal Church  
Saturn Associates, Inc.  
Shipyards Brewing Company  
SHP Management Corporation  
Springer's Jewelers  
Synergent  
Talmatch  
Thornton and Company  
Trademark Federal Credit Union  
Walgreens  
Wells High School  
Yarmouth Lions Club

### \$250-\$499

Bank of America United Way Campaign  
Be the Katalyst  
Beaudoin-Morell Fund  
Bigelow Investment Advisors  
Blue Knights International  
J. B. Brown & Sons  
C. M. Cimino Realty, Inc.  
Craft Beer Cellar  
CSA Enterprises, LLC  
Deep Blue Truth  
Digiorgio Associates, Inc.  
Elsmere BBQ & Wood Grill  
Fox Property Maintenance, Inc.  
Hurley Travel Experts  
JAB Food Services, Inc.  
Abraham S. & Fannie B. Levey Foundation  
Lila East End Yoga  
Maine General Health  
MassMutual Northern New England  
Monaghan Leahy, LLP  
New Hampshire Hospice & Palliative Care Organization  
NorDx employees of MaineHealth  
Northeast Financial Strategies  
Northeast Patient Group  
OTTO Pizza  
Pork in the Beans Productions Inc.  
R.C. Moore, Inc.  
The Perkins Family Trust  
The Yoga Center  
Timber Island Builders  
UBS Financial Services Inc.  
Watershed Partners, Inc.  
Windham Weaponry

***We are grateful to everyone who gives to the Center.***

***A complete list of 2014-15 donors can be found online at [cgcmaine.org](http://cgcmaine.org).***



**Fredrick C. Durst**  
(1929-2015)

*Fred Durst and his wife Marilyn began volunteering for the Center in its earliest days, serving as peer-group facilitators. When their adult son died several years later, the Center's support was there for their daughter-in-law and grandchildren. After Marilyn died in 2008, Fred remained a facilitator and a generous mentor to our staff and volunteers. He died in March, just one month after celebrating his 86th birthday at the Center's annual gala. We are grateful to Fred for his wisdom and humor, his many years of service and support, and his planned legacy gift to the Center. He will be missed.*

*Thank you for your loyalty and generosity in making gifts to the Center. If you have arranged through your will to make a bequest, please let us know, so that we may express our gratitude for your “forever gift.”*

## Gifts from Individuals

### \$5,000-\$10,000

Michael and Denise Dubyak  
Stephen Hart  
Joe and Carole Long  
William O'Donnell  
Melissa Smith and  
Brian Corcoran  
Peter and Donna Verrill

### \$2,500-\$4,999

Michael Akom  
Jim Brady  
Dan and Gail Bruzgo  
Kevin Bunker  
David B. Findlay  
Julie Grosvenor and  
Michael Akom  
Robert and Jennifer Kaplus  
Maureen Keeley and  
Cheryl Greany  
Joseph Kocknavate  
Paul and Janet Letalien  
Mark Pettingill  
Amanda and Mark Rand  
Will Stiles and Hilary Rapkin  
Kimberly Simard  
Craig Tribuno  
Ed and Megan Tumavicus  
Larry and Colette Wold

### \$1,000-\$2,499

Danika Babcock  
Marc Badeau  
Michelle L. Bailey  
Michael Banks  
Charlene Bellenger  
Christopher Bender  
Tim and Janet Brewer  
Christine Bennett and  
Bruce Dalbeck  
Gail Cinelli  
Nate Clark  
Joan M. Conroy  
Jann Coyac  
Kathy and Bob Crispin  
Michael and Andrea  
Descoteaux  
Mary P. Donahue  
Michael Doyle  
Burr and Deborah Duryee  
Kurt and Maria Ebrahim  
Patricia Faria  
Lynn Foley  
Barbara and  
Nicholas Fowler  
Vince Furey, Jr.  
Susan Gagnon  
Paul Haroldsen

Stephen Hendry  
Kevin and Elizabeth Hunt  
John and Lori Black  
Mike Lauze  
Paul Leeman, III  
William R. Legge  
Anne Lynch  
Tricia and Fred Madeira  
Tirumala Devi Maganti  
Timothy Masse  
Joline A. McDonough  
Alan McIlhenny, Jr. and Beth  
Ackerson  
Dana Mitiguy  
John and Carol Mosley  
Marianne Murray  
Elizabeth Orlic  
J.G. O'Rourke  
Frank O'Shea  
Thomas Saturley  
Bryan Shumway  
Jeffrey Small  
John VanLonkhuyzen  
Kevin Walker  
Emily Wesolowski

### \$500-\$999

Sara Almy  
Robert J. Anderson, Jr.  
Deb Austin  
Brett Barker  
John H. Bennett  
Kathleen Bloomer  
Julia Bracken  
Wade Brainerd  
Seth and Amy Bruning  
Cecilia Caldwell and Phil Scavetto  
Douglas S. and Deirdre Carr  
Paul Chace  
David Coffin  
Ann M. Courtney  
Richard and Margaret Curran  
Joe DeLois  
Frederick Demers  
Diane and Gary Donaldson  
Vinal Doody  
Mary Austin Dowd and George Calvert  
Bruce Duquette  
Barbara Durr  
Lissa Ecker  
Shari and Steve Elder  
Greg Fall and Joy Symon Fall  
James T. Fickett  
Ken Smith and Heidi Foreman-Smith  
Sam Fratoni  
Suzanne Gerry  
Leonard and Liane Giambalvo  
Mary Giftos  
Travis Gilbert  
Pete Hazzard  
Tiffany L. Higgins  
John Hill  
Joe and Maria Hyatt  
Mary Jennings  
Gretchen Johnson and David Cummings  
Tracy and Robert Keegan  
Michael and Carolyn Lane  
Kara Leopold  
Harley Lewin  
Peter Lewis  
Sandra Livingston  
John R. Lunt  
Raina and David Maxwell  
Jay Mazelsky  
Gregory and Julie McCarthy

Vanessa McGee  
Scott Mitchell  
Cathleen O'Donnell  
Marsha O'Leary  
Arlene O'Rourke  
Heather Paquette  
Paul Parker  
Elizabeth K. Provost  
Daniel Redmond  
Betsy Richards  
Cathy Roberts  
Patricia Rosi Santucci and  
Jacques Santucci  
Paula Saabye  
Kathy and Kevin Smith  
Philip St. Germain  
Casey Stuber  
Beth Ann Swan  
Nathaniel Thompson  
John Reed and Elyse Tipton  
Raymond Veroneau  
Mark A. Winship  
Howard Yates

### \$200-\$499

Deb Abbondanza  
Dan Abbott  
Kimberly Adams  
Michael Albaum  
Joseph Alexander  
Jeff Allen  
Chuck Alsdurf  
Stephanie and Bill Andy  
Elizabeth Armstrong  
Vincent Asanza  
Richard Asdourian  
Kathleen Babich  
Kate Baldacci  
Alan Beal  
Christelle Belleville  
Bethany Billinger  
Henry Bliss  
Belle Bocal  
Jeff Scott Bolduc  
Jennifer Brayall  
Vicki Brenner  
Elizabeth Brogan  
Diane H. Brooker  
William Brown  
Charlie Bruder  
Janet D. Bruen  
Elizabeth Buckley  
William and Karen Burke  
Michael Burnham  
Gena Canning  
Lawrence E. Carter  
Steven S. Carvel  
Rebecca Casey  
Laura Casparius  
Chris Cimino  
Brennen Clark  
Michael T. Colucci  
Madeleine Corson  
Andrew and Kim Couch  
Christopher Crawford  
Jack Curran  
Ryan Cutting  
Gina D'Angelo  
Douglas Darby  
Reinaldo de los Heros  
Terry Delmonte  
Sally DeLuca  
Sheila Devine  
Ann Dilworth  
Chris Disotto  
Andrew Dixon  
Shelley Doak  
Anna Edgerley  
Jean E. Emery  
Jay Evans  
Heather Fecteau  
Eleanor Flavin  
Lawrence H. Foley  
Michael Foley  
Marjorie Ford  
Maxwell J. Freeman  
Chris Fritch  
Kelly Frost  
Marc Gauthier  
Jim Giberson and Eliza Warren Giberson  
Deborah Giroux  
Lisa Gorman  
Meg Grala  
Thomas Greer  
Angela Gregoire  
Henry Griffin  
Lynne J. Grimaldi  
Maryeileen Haley  
Linda Peyton and Morris Hancock  
Jessica Harrison  
David Haskell  
Kelly Hasson  
Nicholas Hayes  
Quincy Hentzel  
Peter and Julia Herzog  
Brian Hodgkin  
John Holland  
Mary Holland-Buckelew  
Christina Holt  
Dory C. Hoy  
Tina Hunt  
Glenn Irish  
Deborah T. Jabar  
Mariusz Jankowski  
Ron Jobel  
Sherri Kaufman  
Robert and Peggy Keach  
Jason Kendeigh  
Alexandra Keogh  
Christopher Keys  
Scott Kidder  
Chris Charles Klement  
John Knox  
George Koukos  
Michael Kramer  
Linda Labbe  
Lynn LaMontagne  
William Lane  
Joanne Larman  
D. Lawrence  
Lisa Lee  
John Leonard  
Lisa Letourneau  
Sara Lewis  
Nancy Litrocapas  
Jamie Logan  
Marston Lovell  
Eoin Lynch  
Scot MacDonald  
Shelby Macleod  
Suzanne Madigan  
Gregory Maling  
Tim Malisa  
Ann Marie Maynard  
Michael Mayer  
Ian McArthur  
Sharon McKenna  
Stephen Meahl  
Cindy Meoli  
Ian Mercer  
Alissa Messer  
Brian Milliken  
Alicia Milne  
William Mitchell  
Jim Mollere  
Brian Morin  
Gerald H. Morin, Jr.  
Luc Morong  
Eva Morrill  
Jennifer Mull-Brooks  
Justin Munson  
Monique Murray  
John Nahil  
Benno Nelson  
Laurie Nicholas  
Susan H. Nielsen  
Jonathan Nolan  
Frankie Odom  
Beatrice G. Osgood  
Bill Ouellette  
Bethany Ouellette  
Erin Ovalle  
Elizabeth Page  
Constance S. Palys  
Carissa Parent

Amy Parker  
Gina M. Pate  
Suzanne Patterson  
Mark Philbrick  
Carol Plummer  
Kathryn Pratt  
Jim Przybylowicz  
Karen M. Puckett  
George Purgavie  
Sara Queenan  
Elizabeth P. Quinlan  
Claudia J. Racki  
Lawrence Rakovan  
Kay Ralston  
Rebecca Rand  
Jason Raven  
Jackie Real  
Matthew Ryan Real  
Gary Robinson  
Melissa Rubel  
Ben and Sarah Ryan  
Jeffrey Saffer  
Brittany Sanders  
Justin Schair  
Allison D. Schroth  
Sandro Sechi  
Judith G. Shank  
Marie Sheffield  
Mark Siegmund  
Kristen Sinewick  
Leslie Smith  
Oliver Smith  
Kenneth Spire  
Judy Stein  
Christopher A. Stevens  
Andrew Stickney  
Ethan Strimling  
Stephen Strout and Susan Giambalvo  
Linda Swallow  
Susannah Swihart  
Edmund and Pamela Szalajeski  
Marianne and Hector Tarraza  
James Taylor  
William Taylor  
Ralph Tedesco  
Cory Theberge  
Matt and Ellen Theodores  
Lindsey Theriault  
Andrew Thomen  
Nancy and Tim Thompson  
Diane Thornton Chandler  
Christopher Tolford  
Michael Totta  
Bob Tozier  
Kevin Trytek  
Alison Vanderhoof  
Scott Vogel  
Brigid Waelnder  
John Wahlig  
Mary Ellen Walek  
Heather L. Walker  
Adam R. Walker  
Donald Walsh  
David and Diana Warren  
Bradford Watson  
Glen Watson  
Douglas E. Watts  
Mark Webber  
Michael Weiss  
Lana Wescott  
Josh Whaley  
Jonathan Wilk  
Kate Wilkinson  
James and Margaret Wilson  
Andrew Wood  
Monica Wood  
Mark Wrona  
Rhonda J. Wronski  
Jack Wu and Amy Hemmens Wu  
George Yackulic  
Paulette York  
Janice Zurlo  
Rhonda Wronski  
Liz and Steve Wyman  
Howard Yates  
Paulette York  
Janice Zurlo



## In Memory and Honor

### **\$50-\$5,000: Gifts made in memory of:**

Ray and Sonny  
Marie Almy  
Constance Asdourian  
Anthony Attardo  
Joan Banks  
Cliff Baxter  
Matthew Beisswanger  
Lindsay Berghuis  
Maggie Blakeman  
Emily Bobbit  
Melissa Jane and Mike Bourque  
Christopher Bramblett  
Emily Butler  
Sean Casey  
Grant Chandler  
Norbert M. Chiland  
Gregory Collins, MD  
Joan Conley  
Mary E. Corbin  
Henry Armand Daley  
Joshua Lee Danforth  
Carroll Deba  
John Deering  
Courtney Dewitt  
Fred Durst  
Albert R. Farina  
Daniel Fleming  
Bretton Frost  
Peggy Furey  
Pauline Genthner  
Harvey Gerry  
Gertrude Gleason  
Kevin Grover  
Tim Hailey  
John Hamilton  
Mary Hasson  
Bill Hemmens  
Amy Hewitt  
Joan Hutchins  
Raymond P. Jones  
Brendan Keating  
Robert Kirby  
Peg Kirkpatrick  
Connie Korda  
Benjamin Lamontagne  
Mina Zuke Lomac  
Mark and Joline Lovering  
Caoimhe Lynch  
Barbara Marcisso  
Sarah Wright Maxwell  
Amy McDuffie  
Michael McKenna  
Sheila McNabb  
Larayne Mears  
Eileen Minte  
John L. Moore  
Antonio and Maria Morelli  
Philip R Neuhaus  
Jonathan Nolan  
Sheila O'Connell  
Shelly Osgood  
Charles O'Sullivan  
Edward Pinciak  
Dawn Poulin Lewis  
Dr. Aaron P. Pratt  
Devin Remme  
Kevin Ryan  
Julie L. Sanders  
James Sanville  
Pauline Sawyer  
Rom Schutsky and Patricia Webber  
Greg Scully  
Samantha Coons Smith  
Zachary Smith  
Peter Stickney  
Charles Stickney  
Timothy Stickney  
Eddie Szalajeski  
Michael and Mark Thibea McKenna  
Amy Tumavicus  
Dana Vamrakias  
Marcia Ann Varney  
Gary Vavra  
Andrew Weiss  
Sarah Wright  
Therese Zucco  
Marguerite Zumbiel-Blakeman

### **\$50-\$5,000: Gifts made in honor of:**

Molly Anderson  
Wendy Barrett  
Allison Beck  
Paul Black  
Ivelisse Castro  
Center Falmouth Orthopaedic Center  
Elizabeth Clough  
Tracey Collins  
Sorcha Cribben-Merrill  
Kenneth and Beverly Dando  
Jolee and Corey Dewitt  
Karen Dressel  
David and Cathie Flavin  
Lynn Foley  
Ann Fourre  
Stephanie Gildart  
Tim Griffin  
Lynne and Bruce Grimaldi  
William J. Hannigan III  
Deb Henry  
Stephen Hart  
Jack Keely  
Lynn Kenerson  
Kathleen Porter Kristiansen  
John Lennon  
Paul and Janet Letalien  
Marie and Ed Manganello  
Mary March  
Steve Maxcy  
Sharon McKenna  
Michael Moore  
Jenny Nelson  
Denise Novotny  
Jan Reale  
Paul Simonsen  
Barney Skolnick  
Melissa Smith  
David Stearns  
Patricia Stone  
TLC Families and Facilitators  
Lucy and Grace Tumavicus  
Nancy Wallace  
Alan J. Wright  
Ayla Zeimer

## Volunteers

### **Peer Group Facilitators**

#### **20+ Years of service**

Jacob and Kristine Watson  
Reid Stevens

#### **15-19 Years of service**

Henry Bliss  
Ina Demers •  
Chris Gower  
Beth Van Gorden  
Joanne Larman  
Shawna Ohm •  
Sheryl Plummer  
Jori Rynberg  
Abdimaqid Sharif •  
Linda Siglock

#### **10-14 Years of service**

Allison Beck  
Andy Dixon  
Claudia Dwyer  
Steve Hart  
Tatyana Herron  
Drew Hill  
Sharon Hill  
Tricia Jamiol  
Stephanie Morris  
Cathleen O'Donnell  
Cathy Paglio  
Connie Palys  
Toni Parise •  
Leslie Smith  
Jennifer Stockless  
Karen Stowe

#### **5-9 Years of service**

Lynn Abood  
Peter Arndt  
Angie Arndt  
Paul Attardo  
Patti Campbell  
Beth Carter  
Valerie Craig  
Diane Dickinson  
Marjorie Ford  
Pam Hines  
Monique Isherwood  
Jean Jala  
Noreen Jensen  
Sheila Jepson  
Maureen Keeley  
Beth Kittredge  
Joan Martay

Alissa Messer  
Peter Prinz •  
Beth Quinlan  
Peggy Rowe  
Daniela Skalina  
Pat Stone  
Amber Strickland  
Doug Watts

#### **1-4 Years of service**

Judith Abdalla  
Sanaa Abduljabar •  
Danielle Alexander  
Kristina Andren  
Jared Archambault  
Laurie Armstrong  
Brianna Babick  
Faith Barnes •  
Carmela Barton  
Michaela Belair •  
Michael Berkowitz  
Lori Black  
Michael Boardman  
Goeffrey Bohannon  
Michaela Boland  
Ann Marie Briggs  
Gail Brooks  
Kate Brown  
Hannah Brown  
Amanda Buccì  
Jim Byers  
Jane Cahill  
Susan Casey  
Liz Clough  
Liz Colburn  
Heather Corey  
Maryann Corsello  
Sorcha Cribben-Merrill  
Triss Critchfield  
Pheobe Crockett  
Kathryn Diggs  
Lazarus Donato •  
Megan Dow  
Julie Edmonson  
Jack Flanagan  
Lynn Foley •  
Paul Forman  
Leah Foti •  
Karen Franciose  
Kristine Franklin  
Cheryl Fullerton  
Nancy Gearin  
Rachel Gitelson  
Natalya Gorsky •  
Tim Griffin  
Lynne Grimaldi  
Nicole Grover  
Lisa Hammer  
Lucy Hardy  
Suad Hassan  
Rebecca Hatch  
Owen Hayes •  
Anne Heelan  
Deb Henry\*  
Christine Hensley  
Lynne Holler  
Tom Hopkins  
Susan Howe  
Lisa Howell  
Susan Hoyt  
Pamela Kallas  
Nancy Kellar  
Jane Kirton  
Edward Laboke •  
Amanda Langley  
Janine Lauze  
Sue LoBosco  
Helen Lonagan  
Amanda Lopez  
Blaise Maccarrone •  
Margo Mallar •  
Jeanne Markin  
Debbie Mazjanis  
Susan McCadam  
Pam McGrath  
Sharon McKenna  
Audrey McMorro  
Nikki Millonzi  
Gina Mitchell  
Rose Mary Muir •  
Donna Oakley  
Beth Olsen  
Suzanne Patterson  
Alli Penan  
Bethany Peterson-Leck  
Maria Peverada  
Deb Pfeffer  
Linda Piper  
Jay Piscopo  
Cary Plummer

Tony Pollino  
Kay Porter  
Jessica Porter  
Natalie Reisinger •  
Kathryn Ridgeway  
Jacqueline Roberge  
Kristen Ryan  
Zoe Sahloul  
Brittney Sampson  
Erin Saveall  
Jamie Schwellenbach  
Ardo Sharif •  
Judi Slotsky  
Teresa St. Peter  
Ed Szalajeski  
Pamela Szalajeski  
Matthew Theodores  
Carl Toney •  
Rosalie Trujillo  
Rebecca Tryon  
Eugenie Umuratae •  
Stephanie Williams  
Susan Jane Winslow  
Gretalynn Yankiver  
Howard Yates  
Ayla Zeimer

#### **Less than One Year**

Rasha Al Tissini  
Marianne Ameika  
Rebecca Anderson  
Rachel Bristol  
Caitlin Cleary  
Tina Courcy  
Robert Courcy  
Natalie Dean  
Joleen DeWitt  
Jackie Downing •  
Marianne Fasulo  
Jody Fuller  
Lauren Herzig  
Amy Hoffman  
Cathy Hussey  
Dara Jarrendt  
Tiffany Nelson  
Shirley Parker  
Kyle Peterman  
Claire Prescott  
Ryan Quinn  
Jean Taylor-Kiley  
Julia Trujillo-Luengo •  
Sophie Veilleux  
Nancy Verrill

### **Office and Event Volunteers**

Emily Allison  
Jessica Avery  
Leana Ball  
Ryan Barnes  
Dave and Erin Bartoletti  
Christel Batshiondo  
Beacon Group team  
Gail Beals  
Dianne Black  
Belle Bocal  
Katherine Bonawitz  
Megean Bourgeois  
Polly Bradley  
Jen Brayall  
Kimberly Brennan  
Walter Brooks  
Gail Brooks  
Mary Brown  
Joan Burke  
Brian Burnham  
Ronnie Byrnes  
Tom Chabot  
Cheverus students  
Sam Chick  
Vaughn Clark  
Susan Cloutier  
Ida and Peter Connolly  
Karissa D'Attilio  
Hannah Davis  
Tammy Delano  
Nate Dibias  
Diversified Communications employees  
Emily Dube  
Burr Duryee  
Tim Dwyer  
Jessica Dwyer  
Brandy Egan  
Patrick Elbary  
Michelle Esposito  
Missy Esty  
Alexis Ewald  
Katie Gauttier  
Nancy Gearin  
Erica Gervais

Len and Liane Giambalvo  
Eliza Warren Giberson  
Allison Gjeltema  
Tara Goodell  
Nicole Grover  
Leah Guswell  
Chandler Hawkes  
Hebron Academy students  
Quincy Hentzel  
Samantha Higgins  
Kevin and Katie Hogan  
John Holland  
Lynne Holler  
Susan Hoyt  
Peg Hughes  
Heather Hunsicker  
IDEXX employees  
Halee Jandreau  
Julianne Johnson  
Jen Kaplus  
Andrea Krasker Gavin  
Linda Labbe  
Carolyn Lane  
Amanda Langley  
Desiree Leary  
Julie Leeman  
Janet Letalien  
Jillian Littlefield  
Laurel Macs  
The Maids  
RoseAnn McConnell  
Cathy McInnis  
Kim Merrill  
Chelsey Merrill  
Alison Metsker  
Drew Milburn  
Jon Moniscalco  
Brian Morin  
Sarah Mosley  
Assumpta Mpitabakana  
Elizabeth Murphy  
Nancy Nally  
Jan Nelson  
Kaitlyn Oddy  
Michael Ogon  
Jen Oleszinski  
Carissa Parent  
Lori Parent  
Sarah Patten  
Carolyn Ploss  
Amy Podziak  
Emma Pope-Welch  
Suzanne Prinz  
Sara Queenan  
Mark Rand  
John Reed  
Rhonda Ring  
Ann Marie Rousselle  
Erin Ryan  
Stella Santucci  
J.J. Serapas  
Elizabeth Siviski  
Cortney Smart  
Keri Smith  
Marina Stam  
Judith Stark  
Georgia Taylor  
Christine Taylor  
Nancy Thompson  
Kathy Trott  
USM Students  
Shannon Vachon  
Courtney Valley  
Sophie Veilleaux  
Brittany Whelan  
Elizabeth Wheeler  
Eileen Whynot  
Stephanie Williams  
Donna Williams  
Amelia Worthing  
Brittany Young

### **Trainers and Consultants**

Mary Donahue  
Beth Elicker  
Patricia Ellen  
Linda Kelly  
Christine Linnehan  
Peg O'Brien  
Connie Palys  
Shelley Walker Rosen  
Bruce St. Thomas  
Ellen Theodores

**No child should have to grieve alone.**



Your gifts to the Center keep our services free for families.

**Please make the maximum gift you can this year,  
for any child or family who needs the Center.**

**Mail:** P.O. Box 1438, Portland, ME 04104

**Online:** [cgcmaine.org/donate](http://cgcmaine.org/donate)

**By phone:** 207.775.5216

You help children and families recover hope when they need it most.

  
the center for grieving children  
where families find hope and love  
555 Forest Ave., Portland, ME 04101

Nonprofit Org.  
U.S. Postage  
PAID  
Portland, ME  
Permit No. 467

**By supporting the Center, you make an impact. You give grieving children, teens, and families a safe space to grieve. You make sure they feel better.**

- Youth at the Center report a decrease in feelings of loneliness and isolation.
- Youth experience positive behavioral changes, such as better eating, sleeping, concentration, and motivation.
- Eighty-five percent of parents tell us the Center is meeting their families' grief-support needs.
- Ninety percent of youth and adults say they feel comfortable at the Center and have positive relationships with their facilitators.

## Coming Up!



### 2015-16 Hoops for Hope, presented by General Dynamics-Bath Iron Works

Sign up with the Maine Red Claws for visibility and season tickets that benefit the Center!  
#hoopsforhope



### Love Really Counts: Our Annual Auction and Dinner Gala, Friday, February 26, 2016

A sell-out event! Sponsor, donate, volunteer, or buy a ticket. #lovegala

### Swing "Fore" the Center: Paul Gray Memorial Golf Tournament, Tuesday, September 13, 2016

Join leading Maine businesses sponsoring and playing in this unique tournament. #paulgraygolf



### FundRacing in the 2016 TD Beach to Beacon 10K, Saturday, August 6, 2016

Let us know by March that you want to run and raise a minimum of \$500 for us. It's easier than you might think! #cgcfundracer



### Community Conversations

Join a discussion with community members who experienced loss and change when they left war-torn homelands and resettled locally in Maine. To be held in spring 2016.

**More info is available!  
Call the Center at 207.775.5216  
Email: [info@cgcmaine.org](mailto:info@cgcmaine.org)  
Check: [cgcmaine.org](http://cgcmaine.org)**

# support. resilience. healing.

PLEASE JOIN US | [CGCMAINE.ORG](http://CGCMAINE.ORG) | 207.775.5216